



Doc ID: 008331240001 Type: GEN
Recorded: 02/09/2018 at 12:38:45 PM
Fee Amt: \$7.00 Page 1 of 1
Black Hawk County Iowa
SANDIE L. SMITH RECORDER

File **2018-00013138**

*Prepared by & Return to: Herold - Reicks Surveying, 2206 East Bremer Avenue, Waverly, IA 50677, Ph. 319-483-5187

United States Public Land Survey Corner Certificate

Land Survey Monument situated in
Section 2, Township 90 North, Range 13 West of the Fifth Principal Meridian, **Black Hawk** County, Iowa.
On file in **Document #2014-2906** in the County Recorder's office.

This certificate is being prepared in compliance with Iowa Code Chapter 355.11 because:

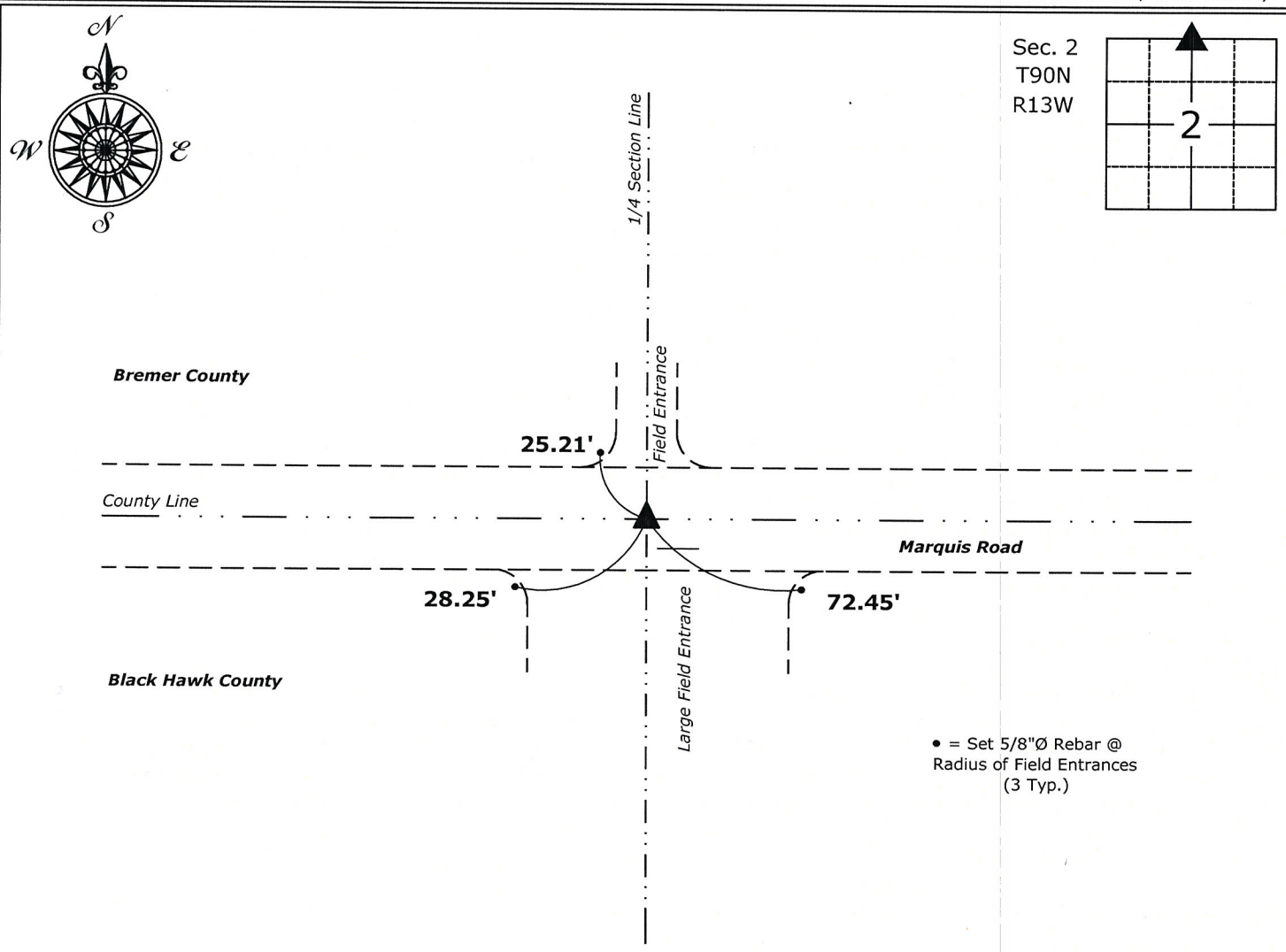
- ☐ There is no certificate on file for this corner.
- ☒ There are no longer three valid ties of record.
- ☐ There are changes to reference ties of record.
- ☒ There is change of monumentation of record.
- ☐ To clarify description of record monument (ties).

Monument Description and Remarks:

North 1/4 Corner: The previously recorded Section Corner Certificate indicates "Found No. 4 Rebar". Found said monument bent, dug deeper to locate straight portion and Found Standard Concrete Monument, 12" Deep. The "Found No. 4 Rebar" was determine to be 1/2" Square Iron Pin, straighten and set flush, 0.26' South of the Concrete Monument. Accepted the Standard Concrete Monument to perpetuate the monument for this corner.

Plan View

(Show a minimum of three reference ties to durable physical objects, relevant monuments and physical conditions that will enable recovery of the corner.)



North 1/4 Corner of Section 2-90-13
Found Standard Concrete Monument, 12" Deep



I hereby certify that this land surveying document was prepared and the related survey work was performed by me or under my direct personal supervision and that I am a duly licensed Land Surveyor under the laws of the State of Iowa.

Isaiah M. Reicks 2-7-18
Isaiah M. Reicks Date:

License number 22468
My license renewal date is December 31, 2019.
Sheets covered by this seal: Individual sheet only

| List Corner to be Indexed | | | |
|---------------------------|---------|------|-------|
| Corner | Section | Twp. | Range |
| N 1/4 | 2 | 90 | 13 |
| Project Number: 2017-538 | | | |
| FB: Bremer 12, Pg. 15 | | | |

File: I:_C3D Projects - Waverly\County Control Systems\BREMER-23 (Denver)\BREMER-23.dwg, 2/7/2018 8:07:07 AM

✓ 7.00 gp

(7)

1