

INDEX ss BLACK HAWK COUNTY, IOWA:ss FEE BOOK # 20 05 10084  
PROOF ss FILED FOR RECORD OCT 20, 2004, AT 11:00 A. M. FEE 1-5.00/ - 1.00/  
COMPARED Patricia A. Less BLACK HAWK COUNTY RECORDER

TERRY VAN LANINGHAM 810 12TH AVE NW WAVERLY, IA 50677

PREPARED BY TERRY D. VAN LANINGHAM, PLS, INC. \* 120 2ND STREET, SW., WAVERLY, IOWA \* (319)352-0801

## UNITED STATES PUBLIC LAND SURVEY CORNER CERTIFICATE OF

Land Survey Monuments situated in Section 01, Township 90 N, Range 13 W,  
of the Fifth Principal Meridian, BLACK HAWK County, Iowa. Previously recorded  
in \_\_\_\_\_ in County Recorder's Office.

(book, page, document number, etc.)

(FOUND corner was used in a survey in the W1/2 of SW1/4 of section.)

Monument Description and Remarks: \_\_\_\_\_

A - IDOT ALUMINUM MONUMENT

B - GAS WARNING SIGN

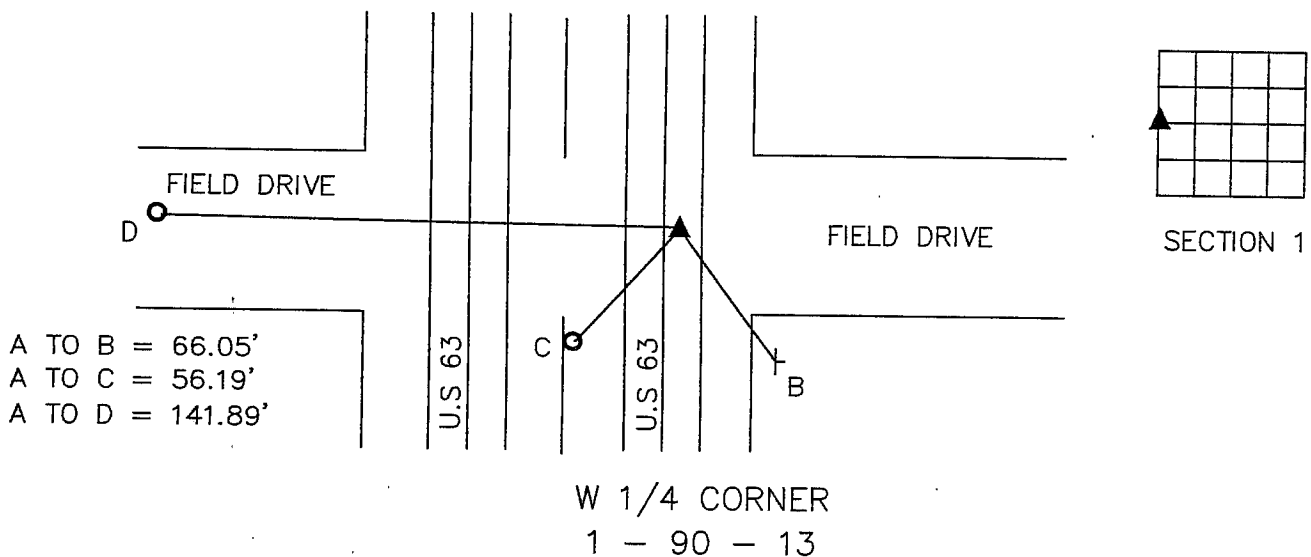
C - ORANGE POST

D - 5/8" REBAR IDOT CAP

enable recovery of the corner.)

### PLAN VIEW

(Show a minimum of three reference ties to durable physical objects, relevant monuments and physical conditions that will



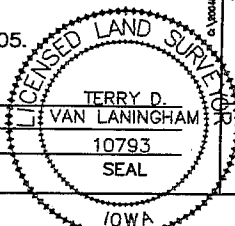
I hereby certify that this land surveying document was prepared and the related survey work was performed by me or under my direct personal supervision and that I am a duly licensed Land Surveyor under the laws of the State of Iowa.

Terry D. Van Laningham OCT 18, 2004  
Terry D. Van Laningham, PLS Date:  
License number 10793

My registration renewal date is December 31, 2005.

Pages or sheets covered by this seal:

THIS SHEET ONLY



### List Corners to be Indexed

Corners	Section	Township	Range
W 1/4 CORNER	01	90 N	13 W

TERRY D. VAN LANINGHAM, PLS. INC.  
810 12TH AVE., NW WAVERLY, IOWA (319) 352 - 2132