

INDEX ☒ BLACK HAWK COUNTY, IOWA:ss FEE BOOK # 20 05 10085
PROOF ☒ FILED FOR RECORD OCT 20, 2004, AT 11:00 A. M. FEE 1-5.00/- - 1.00/
COMPARED Patricia A. Jess BLACK HAWK COUNTY RECORDER

TERRY VAN LANINGHAM 810 12TH AVE NW WAVERLY, IA 50677

PREPARED BY TERRY D. VAN LANINGHAM, PLS, INC. * 120 2ND STREET, SW., WAVERLY, IOWA * (319)352-0801

UNITED STATES PUBLIC LAND SURVEY CORNER CERTIFICATE OF

Land Survey Monuments situated in Section 1, Township 90 N, Range 13 W,
of the Fifth Principal Meridian, BLACK HAWK County, Iowa. Previously recorded
in _____ in County Recorder's Office.

(book, page, document number, etc.)

(FOUND corner was used in a survey in the W1/2 of SW1/4 of section.)

Monument Description and Remarks:

A - IDOT ALUMINUM MONUMENT

B - SIGN WITH #380

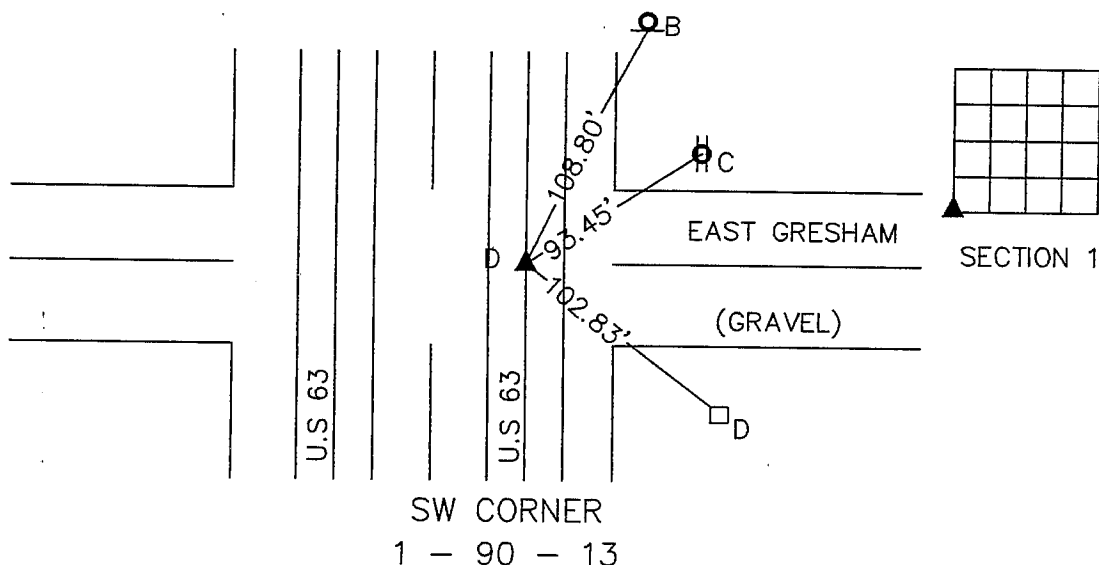
C - "X" NAILS IN POWER POLE

D - NW CORNER OF ELECTRICAL BOX

enable recovery of the corner.)

PLAN VIEW

(Show a minimum of three reference ties to durable physical objects, relevant monuments and physical conditions that will



I hereby certify that this land surveying document was prepared and the related survey work was performed by me or under my direct personal supervision and that I am a duly licensed Land Surveyor under the laws of the State of Iowa.

Terry D. Van Laningham
Terry D. Van Laningham, PLS
License number 10793

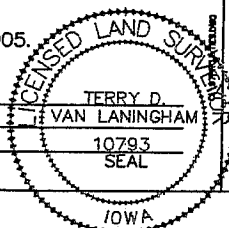
Date:

Oct 18, 2004

My registration renewal date is December 31, 2005.

Pages or sheets covered by this seal:

THIS SHEET ONLY



List Corners to be Indexed

Corners	Section	Township	Range
SW CORNER	1	90 N	13 W

TERRY D. VAN LANINGHAM. PLS. INC.
810 12TH AVE., NW WAVERLY, IOWA (319) 352 - 2132