



Doc ID: 009406010001 Type: GEN  
Recorded: 10/16/2018 at 01:40:58 PM  
Fee Amt: \$7.00 Page 1 of 1  
Black Hawk County Iowa  
SANDIE L. SMITH RECORDER

File 2019-00006258

ENW  
\*  
Prepared by & Return to: Herold - Reicks Surveying, 2206 East Bremer Avenue, Waverly, IA 50677, Ph. 319-483-5187

United States Public Land Survey Corner Certificate

Land Survey Monument situated in  
Section 1, Township 90 North, Range 13 West of the Fifth Principal Meridian, Black Hawk County, Iowa.  
On file in Book 339, Page 393 in the County Recorder's office.

This certificate is being prepared in compliance with Iowa Code Chapter 355.11 because:



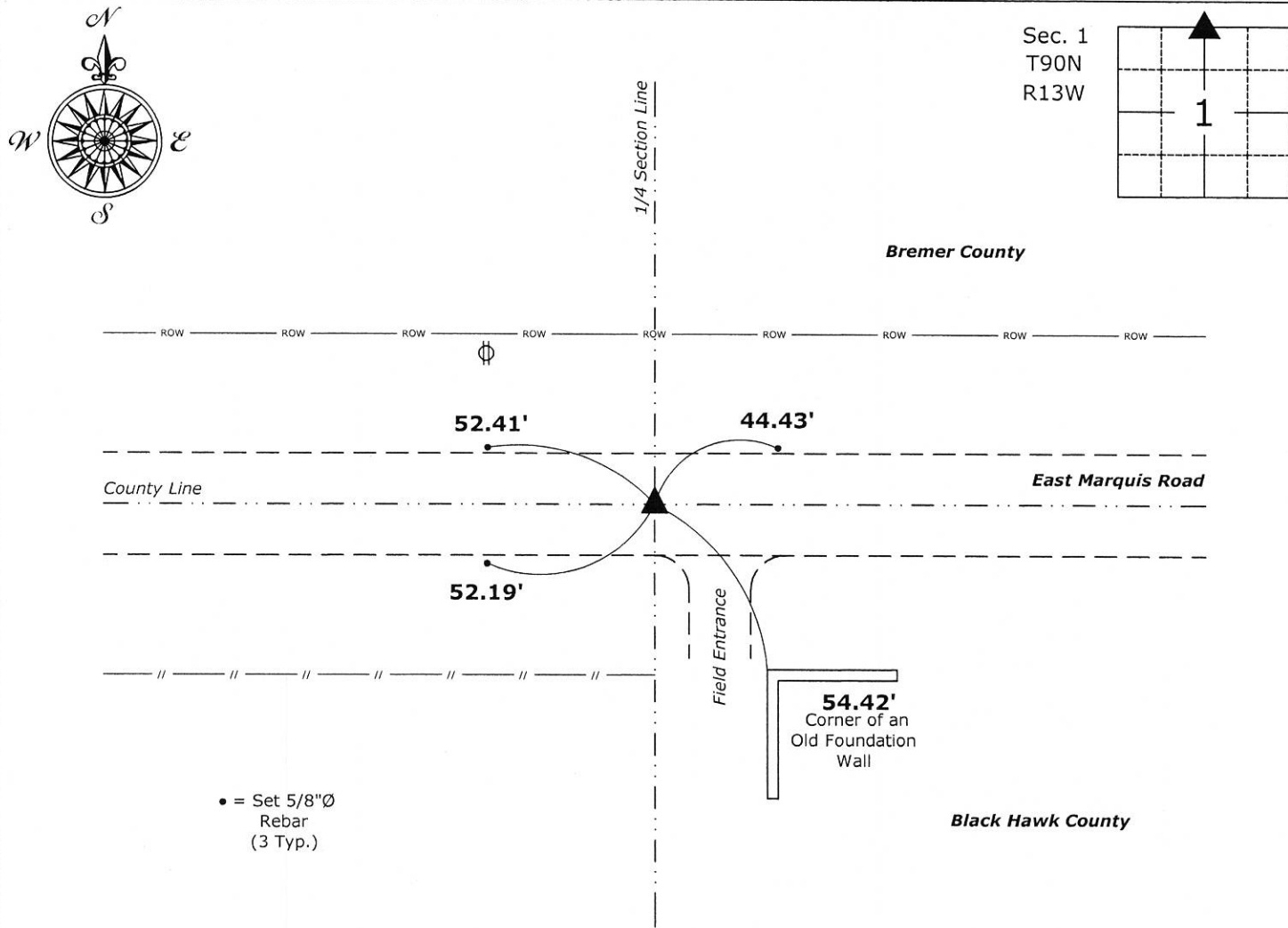
- ☐ There is no certificate on file for this corner.
- ☒ There are no longer three valid ties of record.
- ☐ There are changes to reference ties of record.
- ☒ There is change of monumentation of record.
- ☐ To clarify description of record monument (ties).

Monument Description and Remarks:

**North 1/4 Corner:** Found a broken off concrete monument and bent iron bars on the north side thereof, with information obtained from previous Section Corner Certificate. Removed bars, chiseled the top flush, drilled a hole in the center and a Set Survey Mark Nail w/Stainless Steel Washer PLS 22468 in the Concrete Monument, monument is 9" deep. Set a 5/8"Ø Rebar on the west side of the concrete monument as a magnetic accessory to aid in the future recovery of said monument.

Plan View

(Show a minimum of three reference ties to durable physical objects, relevant monuments and physical conditions that will enable recovery of the corner.)



• = Set 5/8"Ø  
Rebar  
(3 Typ.)

North 1/4 Corner of Section 1-90-13

Set Survey Mark Nail w/Stainless Steel Washer PLS 22468 in a Concrete Monument, 9" Deep



I hereby certify that this land surveying document was prepared and the related survey work was performed by me or under my direct personal supervision and that I am a duly licensed Land Surveyor under the laws of the State of Iowa.

Isaiah M. Reicks 10-12-18  
Isaiah M. Reicks Date:

License number 22468  
My license renewal date is December 31, 2019.  
Sheets covered by this seal: Individual sheet only

List Corner to be Indexed

Corner	Section	Twp.	Range
N 1/4	1	90	13

Project Number: 2018-576

FB: Bremer 12, Pgs. 63