

UNITED STATES PUBLIC LAND SURVEY CORNER CERTIFICATE
OF

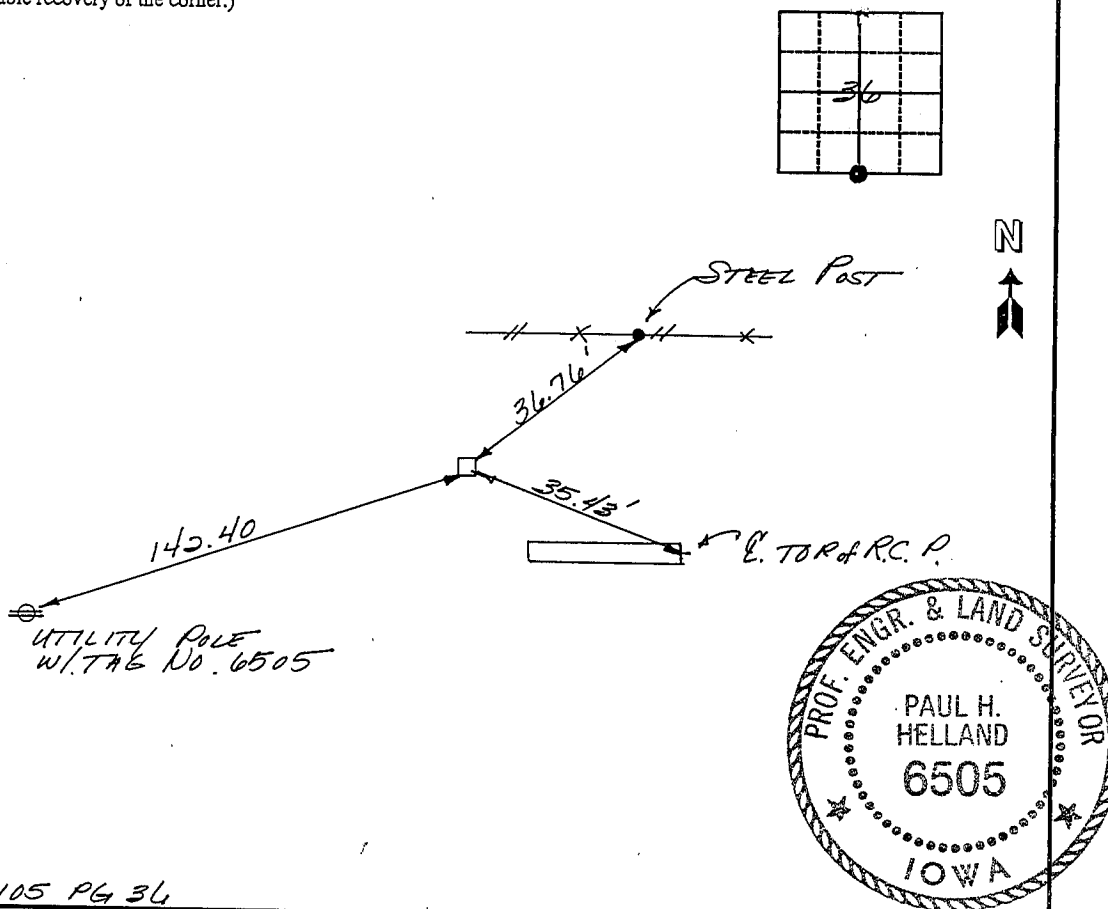
Land Survey Monuments situated in Section 36, Township 90N, Range 12W, of the Fifth Principal Meridian, BLACK HAWK County, Iowa.
Previously recorded in Book _____, Page _____.

(Show reason for preparing this certificate, the evidence and detailed procedures used in establishing the corner positions and monumentation found or placed.)

Monument Description and Remarks: SURVEY PREPARED IN SE 1/4
S 1/4 COR. FOUND CONCRETE MONUMENT W/ BRASS CAP
2.4' DEEP W/ PIN TO EAST SIDE, SET 1/2" RE-BAR W/ CAP
NO. 6505 ABOVE.

PLAN - VIEW

(Show a minimum of three reference ties to durable physical objects, relevant monuments and physical conditions that will enable recovery of the corner.)



FB 105 PG 36

I hereby certify that this plat, map, survey or report was made by me or under my direct personal supervision and that I am a duly Registered Land Surveyor under the laws of the State of Iowa.

Paul H. Helland Date 3/13/95
PAUL H. HELLAND, P. E. & R. L. S. IOWA REGISTRATION NO. 6505
My registration expires December 31, 1995

List Corners to be Indexed

Corners	Section	Twp	Range
<u>S 1/4</u>	<u>36</u>	<u>90N</u>	<u>12W</u>

HELLAND ENGINEERING & SURVEYING, LTD.

Thunder Ridge Bank Building
2322 West First St., Suite B
Cedar Falls, Iowa 50613
319-266-0161

MISC. BK 319 p. 874

4-366