

I RS
P
Z

Document Number: 2007001460

Date: Jul 19, 2006 2:19:58 pm

Aud Fee: 0.00 Rec Fee: 0.00

Trans Tax: 0.00 Rec Management Fee: 0.00

E-Com Fee: 0.00 Non-Standard Page Fee: 0.00

Filed for record in Black Hawk County, Iowa

Patricia S. Sass, County Recorder

PREPARED BY: BLACK HAWK COUNTY ENGINEERS OFFICE
316 E. FIFTH STREET, ROOM 211 WATERLOO, IOWA 50703PH.# (319) 833-3008
FAX.# (319) 833-3139SLSI 9-94
CERT 12-96

UNITED STATES PUBLIC LAND SURVEY CORNER CERTIFICATE OF
Land Survey Monuments situated in Section 35, Township 90 N,
Range 12 W, of the Fifth Principal Meridian, BLACK HAWK County, Iowa.
Previously recorded in Misc. Book n/a, Page n/a, in County Recorder's Office.

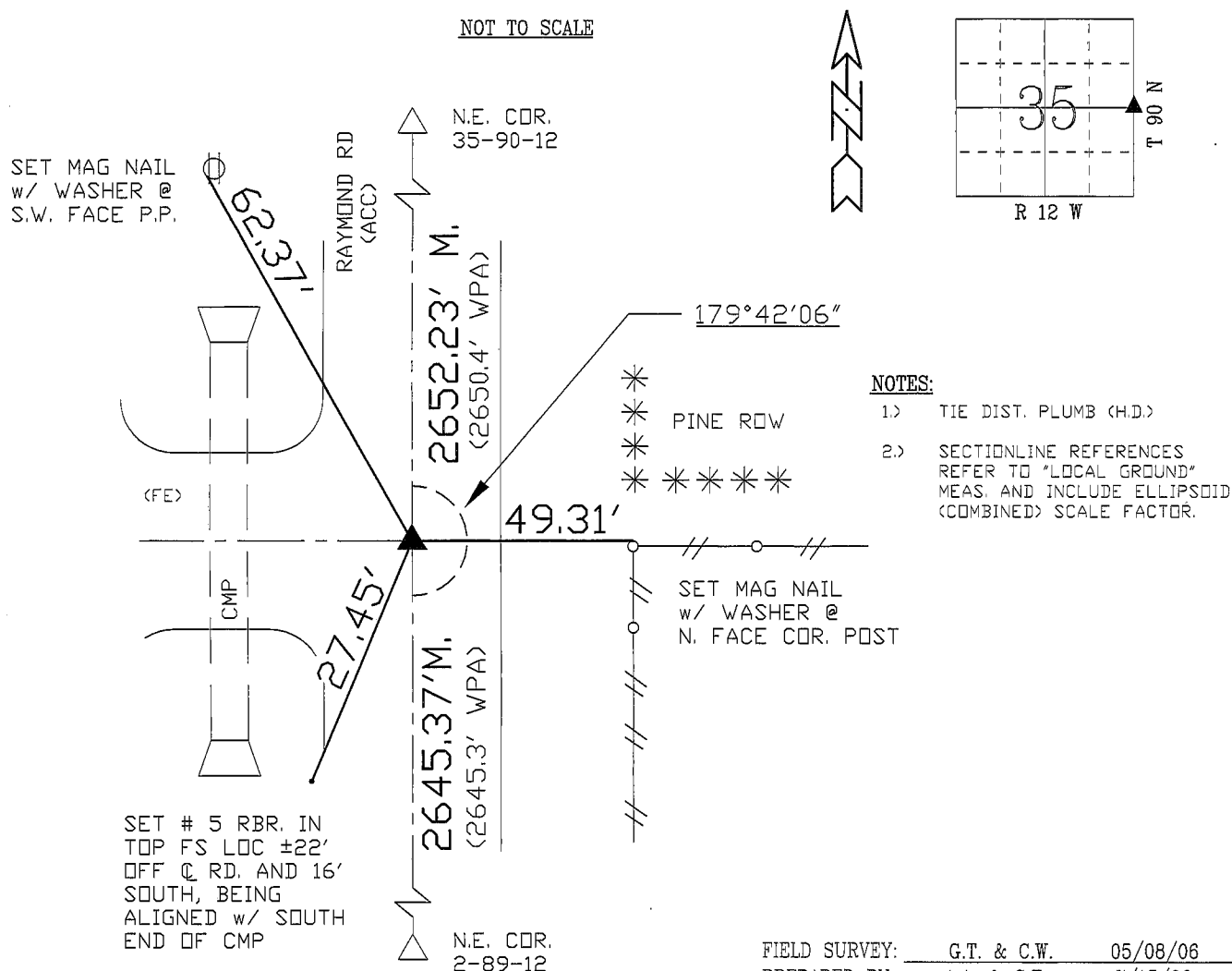
(Show reason for preparing this certificate, the evidence and detailed procedures used in establishing the corner positions and monumentation found or placed.)

Monument Description and Remarks: FND #5 RBR. PRIOR TO RESURF. PROJECT,
AND TIED AS SHOWN. PLAN 4½"-5" HMA RESURF. PROPOSED.
GEOM. DEFL. AND SECTION LINE REFERENCES PER RTK GPS MEAS., (JUNE 2000)
AND VERIFIED AS RE-EST. PER RTK GPS JUNE 2006.
CORNER RE-SET WITH 5IN. L. #5 REBAR LOCATED 0.40' WEST OF C.L. ACC JOINT.

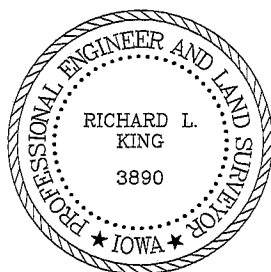
PLAN - VIEW

(Show a minimum of three reference ties to durable physical objects, relevant monuments and physical conditions that will enable recovery of the corner.)

NOT TO SCALE



CERTIFICATION



I hereby certify that this land surveying document was prepared and the related survey work was performed by me or under my direct personal supervision and that I am a duly licensed Land Surveyor under the laws of the State of Iowa.

Richard L. King 7/17/06
Richard L. King (date)

License Number 3890

My license renewal date is December 31, 2007

Pages or sheets covered by this seal:

This Land Corner Certificate Only.

LIST CORNERS TO BE INDEXED

| Corner | Section | Township | Range |
|--------|---------|----------|-------|
| E. 1/4 | 35 | 90 N | 12 W |
| W. 1/4 | 36 | 90 N | 12 W |