

JUDITH A MCCARTHY RECORDER
File 2013-00011417

PH.# (319) 833-3008
FAX.# (319) 833-3139

SLSI 9-94
BHC0 03-09

Land Survey Monuments situated in Section 34 , Township 90 N ,
Range 12 W , of the Fifth Principal Meridian, BLACK HAWK County, Iowa.
Previously recorded in Fee Book 2003 , Page 07559 , in County Recorder's Office.

(Show reason for preparing this certificate): The corner monument has been Replaced or Modified, per Ia. Code 355.11(1)(c)

(Evidence and detailed procedures used in establishing the corner position(s) and monumentation found or placed.)

Monument Description and Remarks: **N. 1/4 CORNER**

CORNER RESET PER COLD-IN-PLACE RECYCLE & H.M.A. RESURF. PROJECT LFM-503--7X-07.
PRIOR TO RESURF. PROJECT, FOUND (#5) 5/8" REBAR PER CURRENT RECORD AND TEMP. REF.
CORNER LOC. PER RTK GPS. AFTER 4" DEEP MILL & RECYCLE COURSE, SOUNDING REMAINED
AND EXCAVATED TO -0.8' DEEP w/o FURTHER CORNER RECOVERY @ LOCATION. AFTER +3"
H.M.A. RESURF. COURSE, RESET CORNER WITH 5/8" (#5) x 8'L REBAR LOCATED @ ±0.3'
NORTH OF H.M.A. JOINT AND ALIGNED ± WITH REMNANT FENCE LINE TO SOUTH.

BHco Hist. Ties: BK. #1003 p. 34 T90-R12

"NOT TO SCALE"

FIELD BOOK: Ties per Topcon 7003i #Z0115

(Show a minimum of three reference ties to durable physical objects, relevant monuments and physical conditions that will enable recovery of the corner.)

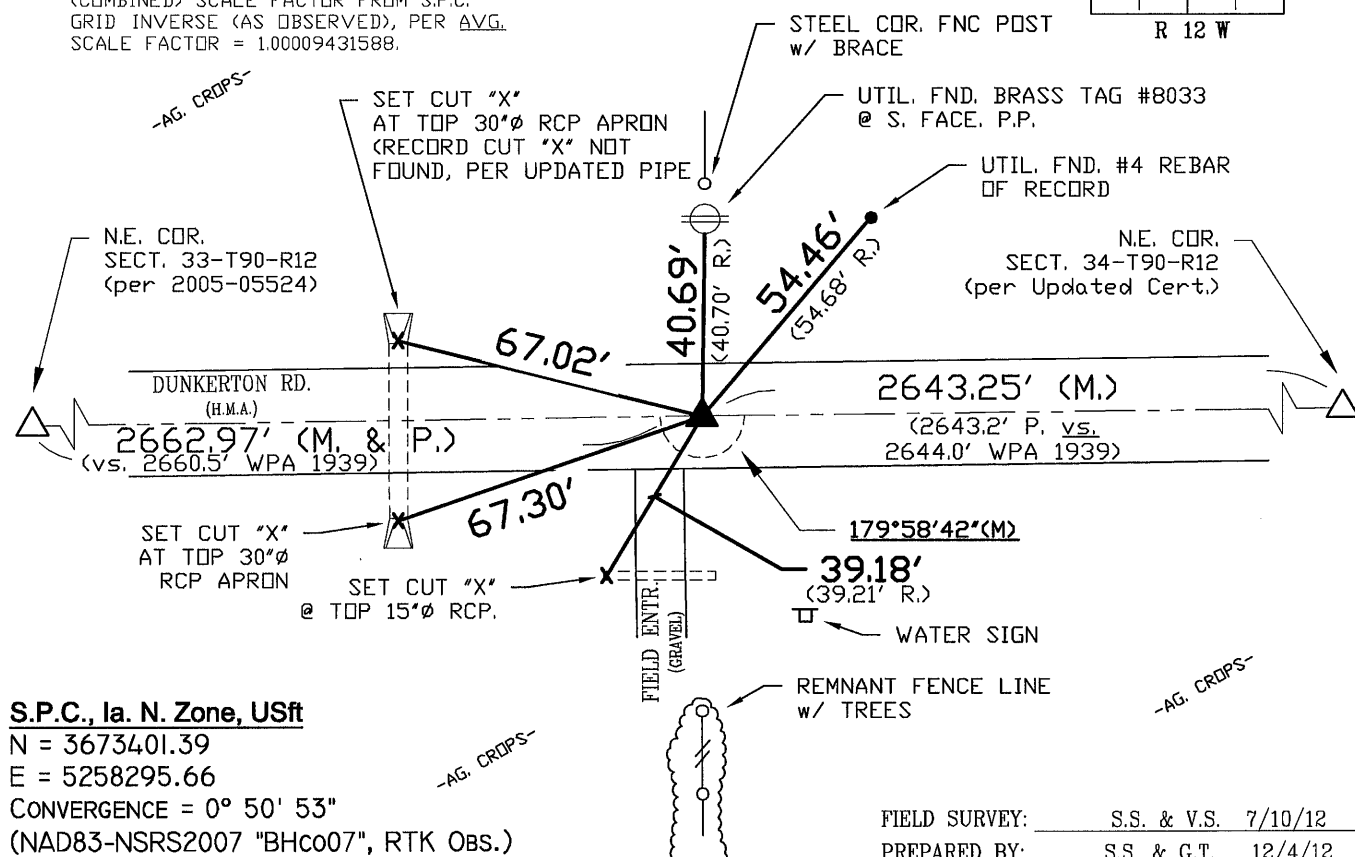
- 1.) TIES PER EDM MEASURE IN EITHER PRISM
"OR" NON-PRISM MODE, WHILE UTILIZING
"INDIRECT" MEASURE, WITH ALL DISTANCES
PLUMB/HORIZ. (HD), UNLESS DENOTED.

(P.) = N. LINE N.W. 1/4
 PER FEE BK. 2004-31539

(P.) = N. LINE N.E. 1/4
PER FILE 2003-07562

(RES. #4517)

2.) SECTION LINE MEASURE REFERS TO "LOCAL GROUND" DIST. AND INCLUDES ELLIPSOID (COMBINED) SCALE FACTOR FROM S.P.C. GRID INVERSE (AS OBSERVED), PER AVG. SCALE FACTOR = 1.00009431588.



S.P.C., Ia. N. Zone, USft

N = 3673401.39

$$E = 5258295.66$$

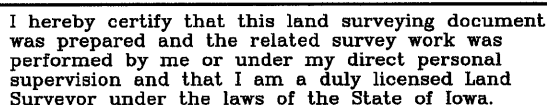
CONVERGENCE = $0^{\circ} 50' 53''$

(NAD83-NSRS2007 "BHco07", RTK OBS.)

FIELD SURVEY: S.S. & V.S. 7/10/12

PREPARED BY: S.S. & G.T. 12/4/12

CERTIFICATION



Geoffrey Allen Tinker 12/04/2012
Geoffrey Allen Tinker (date)

License Number 15748

My license renewal date is December 31, 2012

Pages or sheets covered by this seal:

This Land Corner Certificate Only.

LIST CORNERS TO BE INDEXED

<u>Corner</u>	<u>Section</u> -	<u>Township</u> -	<u>Range</u>
N. 1/4 Cor.	34	90 N	12 W
S. 1/4 Cor.	27	90 N	12 W

INDEX OF ABBREVIATIONS

(M) = "Measured" Dimension	"NP" = Reflectorless EDM Meas.
(P) = "Platted" Dimension	"MLM" = Indirect Measure
(R) = "Record" Dimension	"CM" = Concrete Monument
(C) = "Calculated" Dimension	"SM" = Survey Marker Spike/Tag
"GS" = Iowa Geodetic Survey	"PK" = PK/MAG Nail Brand Style
"WPA" = Works Progress Admin. Survey	
"Φ" = per George Miller Survey (BhCo Surveyor 1858-1860)	
"B" = per John Ball Survey (BhCo Surveyor 1866-1891)	
"N" = per Nathan Barber Survey (BhCo Surveyor 1906-1931)	