

Patricia L. Luss

PAUL HELLAND

Paul H. Helland, 1107 Technology Parkway, Cedar Falls, Iowa 50613-6951, (319)-266-0161

UNITED STATES PUBLIC LAND SURVEY CORNER CERTIFICATE
OFLAND SURVEY MONUMENTS SITUATED IN SECTION NO. 34, TOWNSHIP NO. 90 NORTH, RANGE
NO. 12 WEST OF THE FIFTH PRINCIPAL MERIDIAN, BLACK HAWK COUNTY, IOWA.

PREVIOUSLY RECORDED IN BOOK _____, PAGE _____.

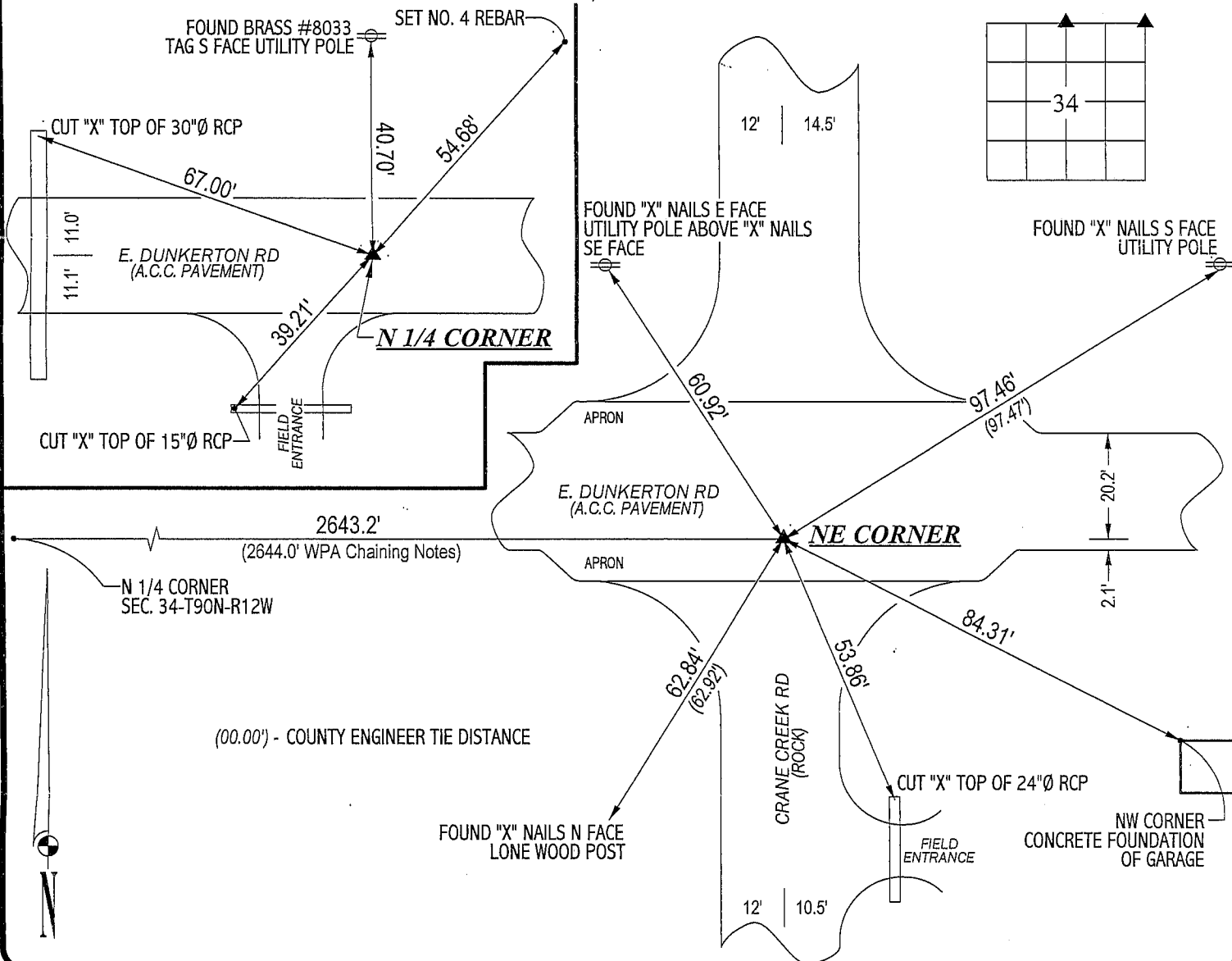
(SHOW REASON FOR PREPARING THIS CERTIFICATE, THE EVIDENCE AND DETAILED PROCEDURES USED IN ESTABLISHING THE
CORNER POSITIONS AND MONUMENTATION FOUND OR PLACED.)

MONUMENT DESCRIPTION AND REMARKS:

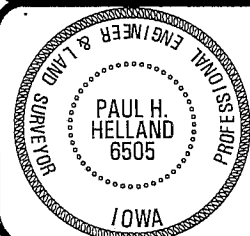
NO CORNER CERTIFICATE ON FILE. SURVEY DONE IN SE 1/4 OF SEC. 27-T90N-R12W.

→ N 1/4 CORNER: COUNTY ENGINEER REFERENCE TIES DATED 6/29/1981 CALL FOR A "VALVE". ROAD HAS BEEN A.C.C. OVERLAYED
SINCE THEN. FOUND NO. 5 REBAR IN A.C.C. PAVEMENT CORRESPONDING TO SAID REFERENCE TIES.→ NE CORNER: COUNTY ENGINEER REFERENCE TIES DATED 7/02/1980 STATES "CONCRETE MON. BROKEN OFF, LOCATED AND SET
REROD ON TOP". ROAD HAS BEEN A.C.C. OVERLAYED SINCE THEN. FOUND NO. 7 REBAR IN A.C.C. PAVEMENT CORRESPONDING
TO SAID REFERENCE TIES. SAID TIES ALSO STATE "CENTERLINE 8.45' NORTH" OF CORNER.

PLAN VIEW

(SHOW A MINIMUM OF THREE REFERENCE TIES TO DURABLE PHYSICAL OBJECTS, RELEVANT MONUMENTS AND PHYSICAL
CONDITIONS THAT WILL ENABLE RECOVERY OF THE CORNER.)HELLAND ENGINEERING & SURVEYING, LTD.
1107 Technology Parkway
Cedar Falls, Iowa 50613-6951
(319)-266-0161

FILE NAME: 02-280CC.DRG

I hereby certify that this land surveying document was prepared
and the related survey work was performed by me or under my
direct personal supervision and that I am a duly licensed Land
Surveyor under the laws of the State of Iowa.*Paul H. Helland*
Paul H. Helland
License Number 6505
My license renewal date is December 31, 2003.
All pages or sheets are covered by this seal except:

LIST CORNERS TO BE INDEXED

| CORNER | SECTION | TOWNSHIP | RANGE |
|--------------|---------|----------|-------|
| N 1/4 CORNER | 34 | 90N | 12W |
| NE CORNER | 34 | 90N | 12W |

Rec