

MSC  
INDEX  
MARGIN  
PROOF  
COMPARE

BLACK HAWK COUNTY IOWA:SS 22255  
FILED FOR RECORD MAY 1, 1998 AT  
4:00 P .M. AND RECORDED IN BOOK 329  
OF MISC PAGE 943  
RECORDER  
FEE 1-5.00/  
MICHELS ENGINEERING CO  
410 BRENTWOOD AVE  
WATERLOO, IA 50701

Harold F. Michels 410 Brentwood Ave., Waterloo, Iowa 50701 319-235-7770

# UNITED STATES PUBLIC LAND SURVEY CORNER CERTIFICATE

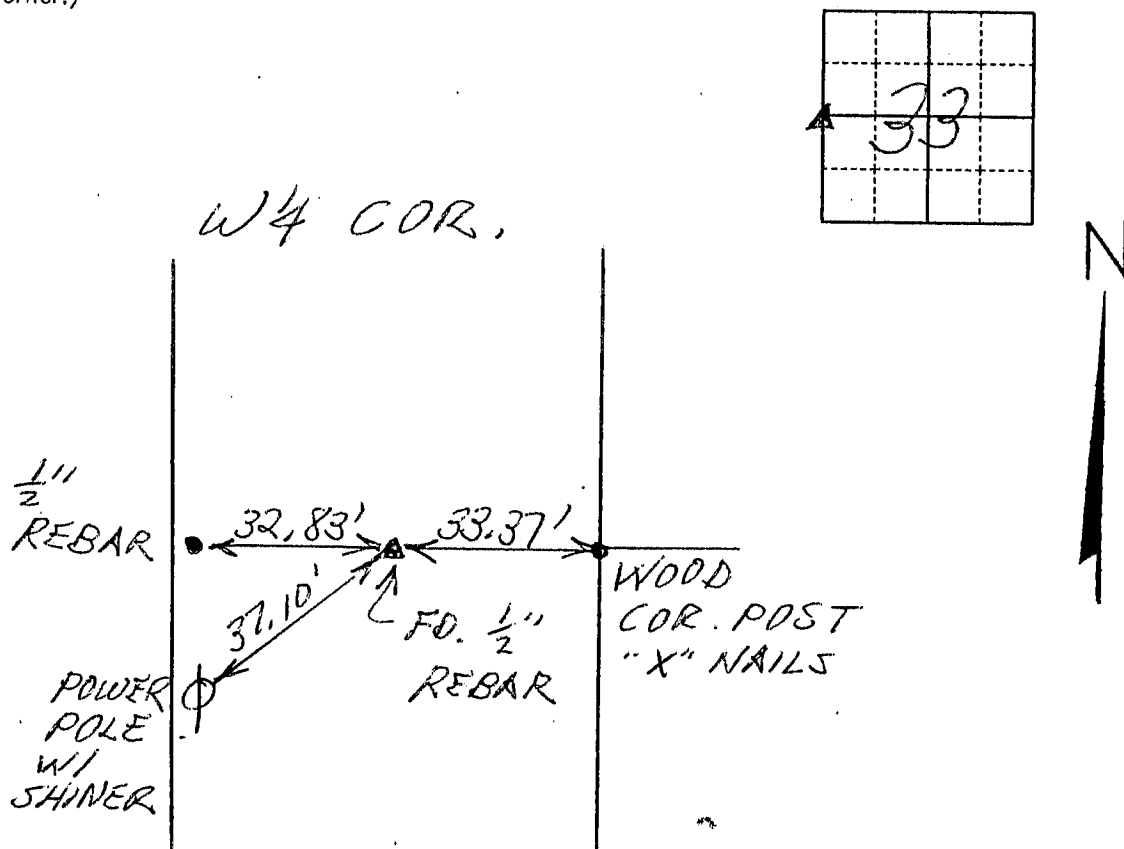
Land Survey Monuments situated in Section 33, Township 90 North, Range 12 West, of the Fifth Principal Meridian, BLACK HAWK County, Iowa.  
Previously recorded in N/A in County Recorder's Office.  
(book, page, document number, etc.)

(Show reason for preparing this certificate, the evidence and detailed procedures used in establishing the corner positions and monumentation found or placed.)

Monument Description and Remarks FOUND IRON BAR MONUMENT AS  
PER COUNTY ENGINEER'S RECORDS. SET NEW TIES.

## PLAN - VIEW

(Show a minimum of three reference ties to durable physical objects, relevant monuments and physical conditions that will enable recovery of the corner.)



I hereby certify that the survey work was completed and this certificate was prepared by me or under my direct personal supervision and that I am a duly registered land surveyor under the laws of the state of Iowa.

Signature: Harold F. Michels

Date: 2-16-98 Harold F. Michels Reg. No. 3862

My registration renewal date is Dec. 31, 99.

SEAL

BOOK 329 PAGE 943

### List Corners to be Indexed

Corners	Section	Twp	Range
W 1/4 COR.	33	90	12

