



Env

Prepared by & Return to: Herold - Reicks Surveying, 2206 East Bremer Avenue, Waverly, IA 50677, Ph. 319-483-5187

United States Public Land Survey Corner Certificate

Land Survey Monument situated in  
Section 33, Township 90 North, Range 12 West of the Fifth Principal Meridian, Black Hawk County, Iowa.  
On file in Document #2005-05524 in the County Recorder's office.

This certificate is being prepared in compliance with Iowa Code Chapter 355.11 because:



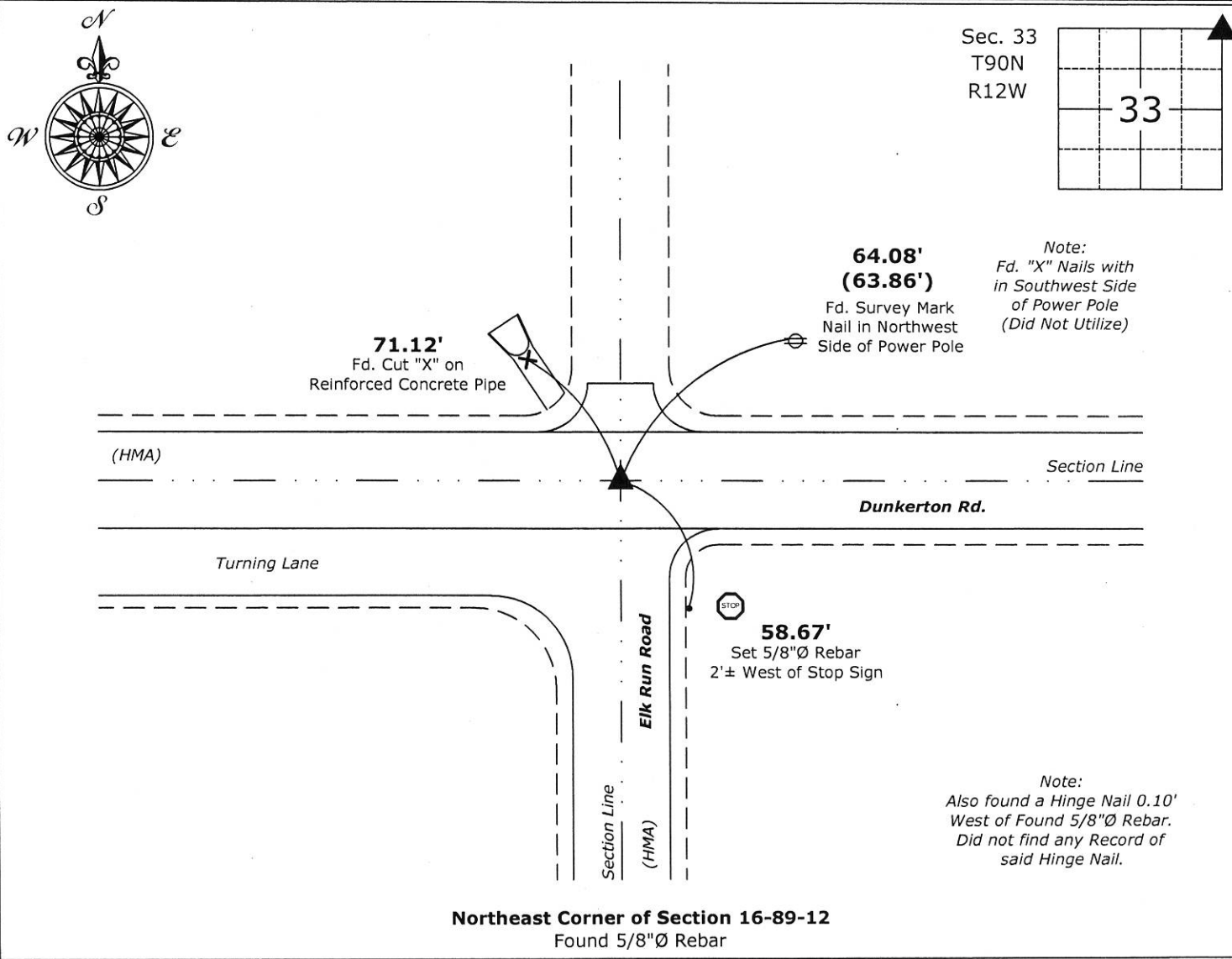
- ☐ There is no certificate on file for this corner.
- ☒ There are no longer three valid ties of record.
- ☐ There are changes to reference ties of record.
- ☐ There is change of monumentation of record.
- ☐ To clarify description of record monument (ties).

Monument Description and Remarks:

**Northeast Corner:** Found 5/8"Ø Rebar with information obtained from the previously recorded Section Corner Certificate. Corner was used in conjunction with Project No. FM-C007(149)--55-07.

Plan View

(Show a minimum of three reference ties to durable physical objects, relevant monuments and physical conditions that will enable recovery of the corner.)



Northeast Corner of Section 16-89-12  
Found 5/8"Ø Rebar



I hereby certify that this land surveying document was prepared and the related survey work was performed by me or under my direct personal supervision and that I am a duly licensed Land Surveyor under the laws of the State of Iowa.  
*Isaiah M. Reicks* 2-25-19  
Isaiah M. Reicks Date:  
License number 22468  
My license renewal date is December 31, 2019.  
Sheets covered by this seal: Individual sheet only

List Corner to be Indexed			
Corner	Section	Twp.	Range
NE	33	90	12
Project Number: 2018-853			
FB: Black Hawk 10, Pgs. 35			