

BLACK HAWK COUNTY ENGINEERS OFFICE

PREPARED BY: BLACK HAWK COUNTY ENGINEERS OFFICE
316 E. FIFTH STREET, ROOM 211 WATERLOO, IOWA 50703PH.# (319) 833-3008
FAX.# (319) 833-3139SLSI 9-94
CERT 12-96

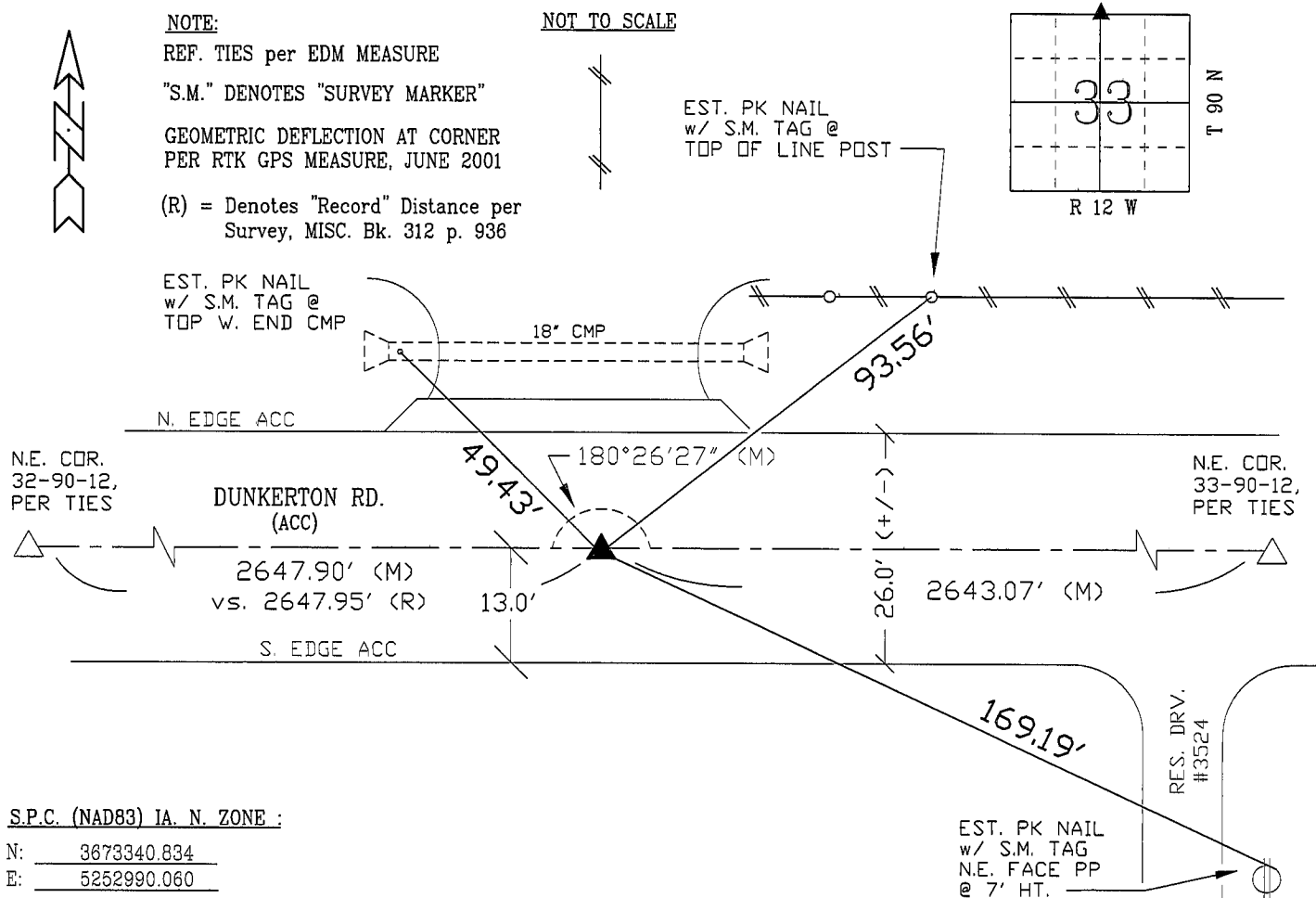
UNITED STATES PUBLIC LAND SURVEY CORNER CERTIFICATE OF
Land Survey Monuments situated in Section 33, Township 90 N,
Range 12 W, of the Fifth Principal Meridian, BLACK HAWK County, Iowa.
Previously recorded in Misc. Book n/a, Page n/a, in County Recorder's Office.

(Show reason for preparing this certificate, the evidence and detailed procedures used in establishing the corner positions and monumentation found or placed.)

Monument Description and Remarks: FOUND #4 RBR. PRIOR TO RESURFACING.
RE-EST. #5 REBAR x 5" L. FLUSH w/ ACC @ C.L. ACC JOINT AND ALIGNED
w/ FENCE TO NORTH. UPDATED REF. TIES AS DENOTED, w/ LAND COR.
DISTANCES DENOTED @ 1/x (X=Sc.) w/o ELLIPSOID FACTOR CONSIDERED PER
RTK GPS MEASURE, JUNE 2001.
CORNER UPDATED DUE TO ACC RESURFACING PROJECT, JULY-AUG. 2004.

PLAN - VIEW

(Show a minimum of three reference ties to durable physical objects, relevant monuments and physical conditions that will enable recovery of the corner.)



S.P.C. (NAD83) 1A. N. ZONE :

N: 3673340.834

E: 5252990.060

Sc.: 0.999946801098

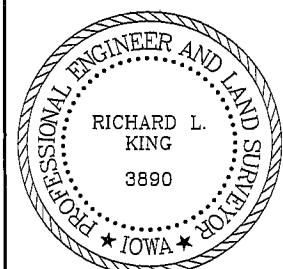
Conv.: 0°-50'-05"

Classif.: Second, Cl. II

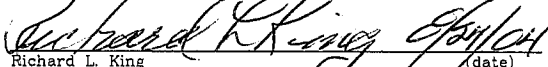
FIELD SURVEY: G.T. & K.E. 08/11/04

PREPARED BY: G.T. 08/23/04

CERTIFICATION



I hereby certify that this land surveying document
was prepared and the related survey work was
performed by me or under my direct personal
supervision and that I am a duly licensed Land
Surveyor under the laws of the State of Iowa.


Richard L. King (date)

License Number 3890

My license renewal date is December 31, 2005

Pages or sheets covered by this seal:

This Land Corner Certificate Only.

LIST CORNERS TO BE INDEXED

Corner	Section	Township	Range
N. 1/4	33	90 N	12 W
S. 1/4	28	90 N	12 W