

Paul H. Helland, 1107 Technology Parkway, Cedar Falls, Iowa 50613-6951, (319)-266-0161

## UNITED STATES PUBLIC LAND SURVEY CORNER CERTIFICATE OF

LAND SURVEY MONUMENTS SITUATED IN SECTION NO. 33, TOWNSHIP NO. 90 NORTH, RANGE  
NO. 12 WEST OF THE FIFTH PRINCIPAL MERIDIAN, BLACK HAWK COUNTY, IOWA.  
PREVIOUSLY RECORDED IN FEE BOOK 2005-05523.

(SHOW REASON FOR PREPARING THIS CERTIFICATE, THE EVIDENCE AND DETAILED PROCEDURES USED IN ESTABLISHING THE  
CORNER POSITIONS AND MONUMENTATION FOUND OR PLACED.)

### MONUMENT DESCRIPTION AND REMARKS:

ONLY TWO REFERENCE TIES REMAINED. SURVEY COMPLETED IN THE SE 1/4 OF SEC. 28-T90N-R12W.

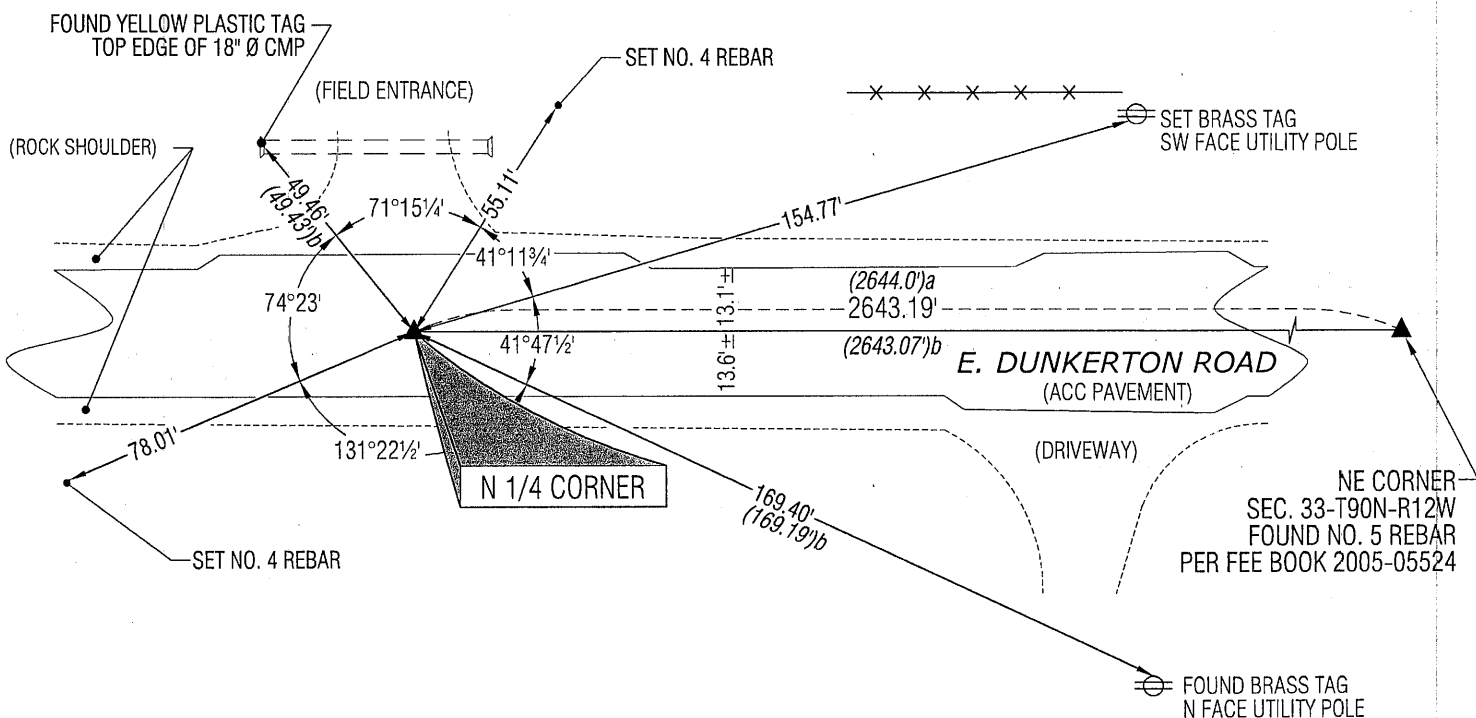
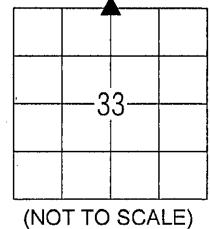
→ **N 1/4 CORNER:** USPLSCC FEE BOOK 2005-05523 DATED 8/24/2004 CALLS FOR [FOUND #4 RBR. PRIOR TO RESURFACING.  
RE-EST. #5 REBAR x 5" L. FLUSH w/ ACC @ C.L. ACC JOINT AND ALIGNED w/ FENCE TO NORTH. UPDATED REF. TIES AS  
DENOTED, w/ LAND COR. DISTANCES DENOTED @ 1/x (X=Sc.) w/o ELLIPSOID FACTOR CONSIDERED PER RTK GPS MEASURE,  
JUNE 2001. CORNER UPDATED DUE TO ACC RESURFACING PROJECT, JULY-AUG. 2004.] FOUND NO. 5 REBAR FLUSH IN ACC  
PAVEMENT.

### PLAN VIEW

(SHOW A MINIMUM OF THREE REFERENCE TIES TO DURABLE PHYSICAL OBJECTS, RELEVANT MONUMENTS AND PHYSICAL  
CONDITIONS THAT WILL ENABLE RECOVERY OF THE CORNER.)

#### LEGEND

- (0.0')a PER WPA NOTES DATED 8/16/1939  
(0.0')b PER USPLSCC FEE BOOK 2005-05523  
DATED 8/24/2004

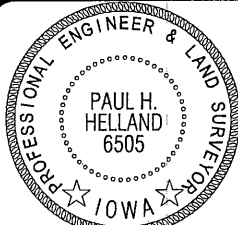


(BEARINGS ARE ASSUMED)



HELLAND ENGINEERING & SURVEYING, LTD.  
1107 Technology Parkway  
Cedar Falls, Iowa 50613-6951  
(319)-266-0161

SHINER = 8d NAIL & 1 5/16"Ø METAL SHINER  
BRASS TAG = 8d NAIL & 13/16"Ø BRASS TAG  
OPC = PLASTIC CAP (O=ORANGE, R=RED, Y=YELLOW)  
(00') RECORDED AS FILE NAME: 13-169-24.DWG



I hereby certify that this land surveying document was prepared  
and the related survey work was performed by me or under my  
direct personal supervision and that I am a duly licensed  
Professional Land Surveyor under the laws of the State of Iowa.

Paul H. Helland  
License Number 6505  
My license renewal date is December 31, 2013.  
All pages or sheets are covered by this seal except:

LIST CORNERS TO BE INDEXED			
CORNER	SECTION	TOWNSHIP	RANGE
N 1/4 CORNER	33	90N	12W
S 1/4 CORNER	28	90N	12W