

UNITED STATES PUBLIC LAND SURVEY
CORNER CERTIFICATE OF

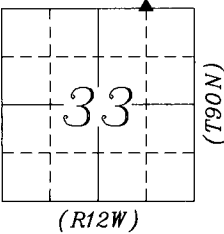
LAND SURVEY SITUATED IN:	Section 33, Township 90 North, Range 12 West, of the Fifth Principal Meridian, Black Hawk County, Iowa.
PREVIOUSLY RECORDED IN BOOK:	
INSTRUMENT #:	2014-00000246
FIELD WORK COMPLETED:	8/5/2021
SURVEY PREPARED BY: RESPOND TO:	CLAPSADDLE-GARBER ASSOCIATES, INC, 5106 NORDIC DR. CEDAR FALLS, IA 50613 PHONE 319-266-0258 TSTEWART@CGACONSULTANTS.COM



Doc ID: 010375350001 Type: GEN
Recorded: 01/26/2022 at 04:45:50 PM
Fee Amt: \$0.00 Page 1 of 1
Black Hawk County Iowa
SANDIE L. SMITH RECORDER

File 2022-00015291

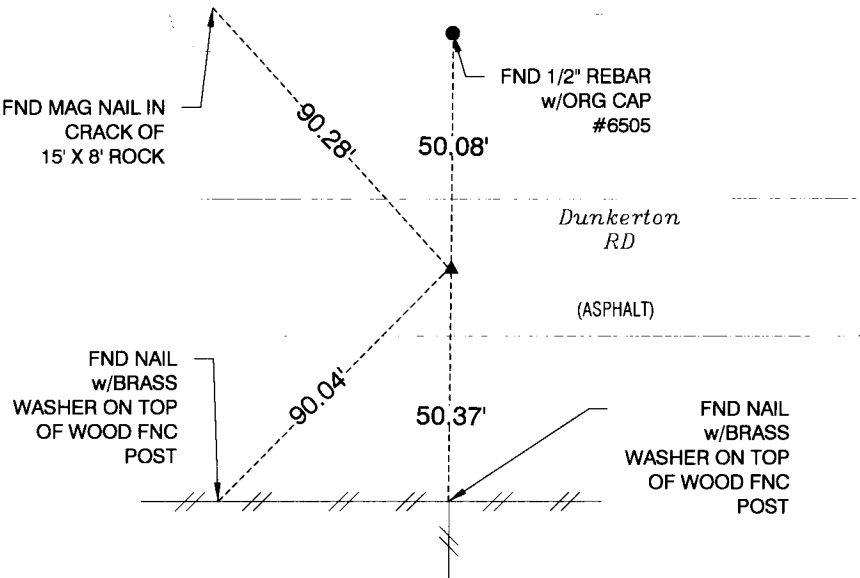
THIS CERTIFICATE WAS PREPARED TO PERPETUATE MONUMENTATION AFTER BLACK HAWK COUNTY HMA RESURFACING AS A PART OF
PROJECT STBG-SWAP-C007(159)--FG-07. CORNERS WERE SET USING METHODS DESCRIBED BELOW.



PLAN-VIEW
NO SCALE

LEGEND:

- ▲ GOVERNMENT CORNER MONUMENT FOUND
- △ GOVERNMENT CORNER MONUMENT SET
- 1/2" x 30" REBAR SET
- PARCEL OR LOT CORNER MONUMENT FOUND
- EXISTING FENCE
- LARGE FIELD STONE w/SURVEY MARKER



NORTHWEST CORNER
NE1/4 - NE1/4
SECTION 33-90-12

FND MAG NAIL PRIOR TO PROJECT
CONSTRUCTION, RESET MAG SPIKE
AFTER CONSTRUCTION WAS COMPLETE



Clapsaddle-Garber Associates, Inc
5106 Nordic Drive
Cedar Falls, Iowa 50613
Ph 319-266-0258
www.cgaconsultants.com

DRAWN
KVL

SHEET NO.
1

DATE

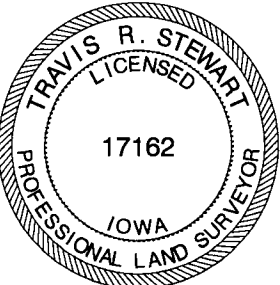
01-17-2022

PROJECT NO.

78321.05

List Corners to be Indexed

Corners	Section	Township	Range
NW CORNER NE 1/4 - NE 1/4	33	90N	12W
SW CORNER SE 1/4 - SE 1/4	28	90N	12W



I hereby certify that this land surveying document was prepared
and the related survey work was performed by me or under
my direct personal supervision and that I am a duly Licensed
Professional Land Surveyor under the laws of the State of Iowa.

Travis R. Stewart 1/21/2022
Travis R. Stewart, PLS Date

Iowa License Number 17162

My License Renewal Date is December 31, 2023

Pages or sheets covered by this seal: THIS SHEET