

Doc ID: 004994080001 Type: GEN
Kind: CORNER
Recorded: 12/07/2012 at 02:56:10 PM
Fee Amt: \$7.00 Page 1 of 1
Black Hawk County Iowa
JUDITH A MCCARTHY RECORDER
File 2013-00011728

X ENW
WAYNE CLAASSEN ENGINEERING AND SURVEYING, INC.
P.O. BOX 898 WATERLOO, IOWA 50704-0898

PHONE: (VOICE) 319-235-6294
(FAX) 319-235-0028

UNITED STATES PUBLIC LAND SURVEY CORNER CERTIFICATE

Land Survey Monuments situated in Section 33, Township 90 North, Range 12 West, of the Fifth Principal Meridian, Black Hawk County, Iowa.

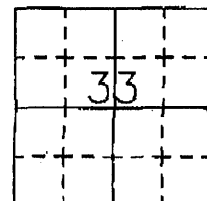
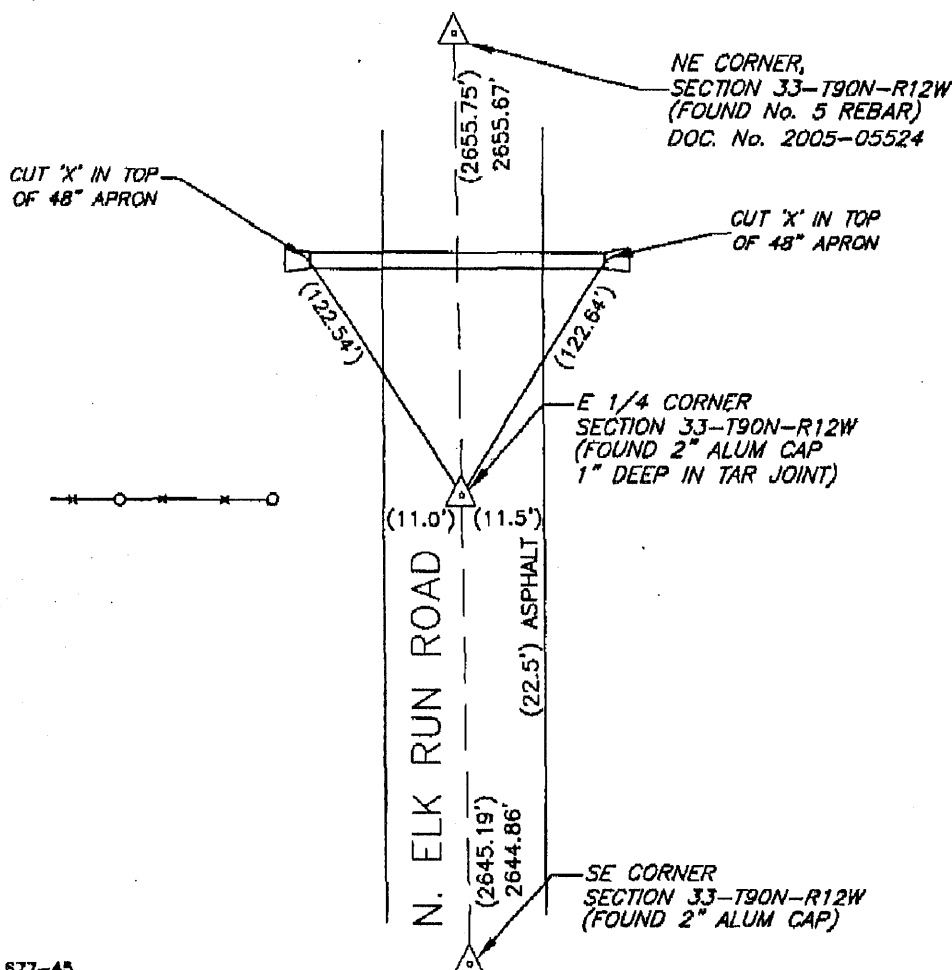
Previously recorded in _____ in County Recorder's Office.
(book, page, document number, etc.)

Monument Description and Remarks

BHco. Eng. historic corner ties (dated 1972) refer to corner as "Set Iron Pin". Per BHco. reference, corner was then reset w/ "±7in. L. Stub 5/8" Rebar w/ Alum. Cap" as part of ACC Resurfacing (prev. PCC Pavement Rubbelized) project in 2001. Previous corner was noted as "Found #5 Stub Rebar in PCC" with temp. x-ties per BHco. Field Book 479-B p.35. BHco. Engineer provided NAD83 (1994 Network) S.P.C. Coordinates for corner location, as observed per RTK GPS during 1999 Mapping project, therefore Sectionline record refer to "Grid" distances. Found 2" aluminum disk 1" deep in tar joint as per ties provided by Black Hawk County Engineer's Office. This certificate was filed because there is no certificate on file.

00.00 DENOTES RECORD DIMENSION (BHC TIES)
(00.00) DENOTES FIELD DIMENSION

PLAN - VIEW



BK 677-45

I hereby certify that this land surveying document was prepared and the related survey work was performed by me or under my direct personal supervision and that I am a duly Licensed Land Surveyor under the laws of the State of Iowa.

Signature: _____

David L. Schell, L.S.

Date: MAY 17, 2012 Lic. No. 18775

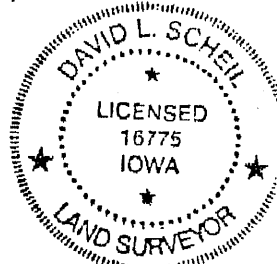
Pages or Sheets Covered by this Seal: THIS SHEET ONLY.

My license renewal date is December 31, 2012

SEAL

List Corners to be Indexed

| Corners | Section | Twp | Range |
|---------------|---------|------|-------|
| E 1/4 CORNER, | 33 | 90 N | 12 W |
| W 1/4 CORNER, | 34 | 90 N | 12 W |



14.005N

7.00

1