

ENGINEER'S OFFICE

PREPARED BY: BLACK HAWK COUNTY ENGINEERS OFFICE
316 E. FIFTH STREET, ROOM 211 WATERLOO, IOWA 50703PH.# (319) 833-3008
FAX.# (319) 833-3139LSI 9-94
CERT 12-96

UNITED STATES PUBLIC LAND SURVEY CORNER CERTIFICATE OF
Land Survey Monuments situated in Section 31, Township 90 N,
Range 12 W, of the Fifth Principal Meridian, BLACK HAWK County, Iowa.
Previously recorded in Misc. Book n/a, Page n/a, in County Recorder's Office.

(Show reason for preparing this certificate, the evidence and detailed procedures used in establishing the corner positions and monumentation found or placed.)

Monument Description and Remarks: FND. P.K. NAIL PRIOR TO RESURFACING.
w/o CORNER CERT. OF RECORD PER PLAT OF SURVEY IN MISC. BK.343 p.798.
TEMP. REF. & RE-EST. #5 RBR. x 5" L. FLUSH w/ ACC SURFACE AND
ALIGNED WITH OLD COR. POST N. & FENCE ON S. HORIZON BEING LOC. @ C.L.
ACC. JOINT. CORNER OBS. DURING 2003 SHOULDERING PROJECT, AND FILED
DUE TO ACC RESURFACING PROJECT, JULY-AUG. 2004.

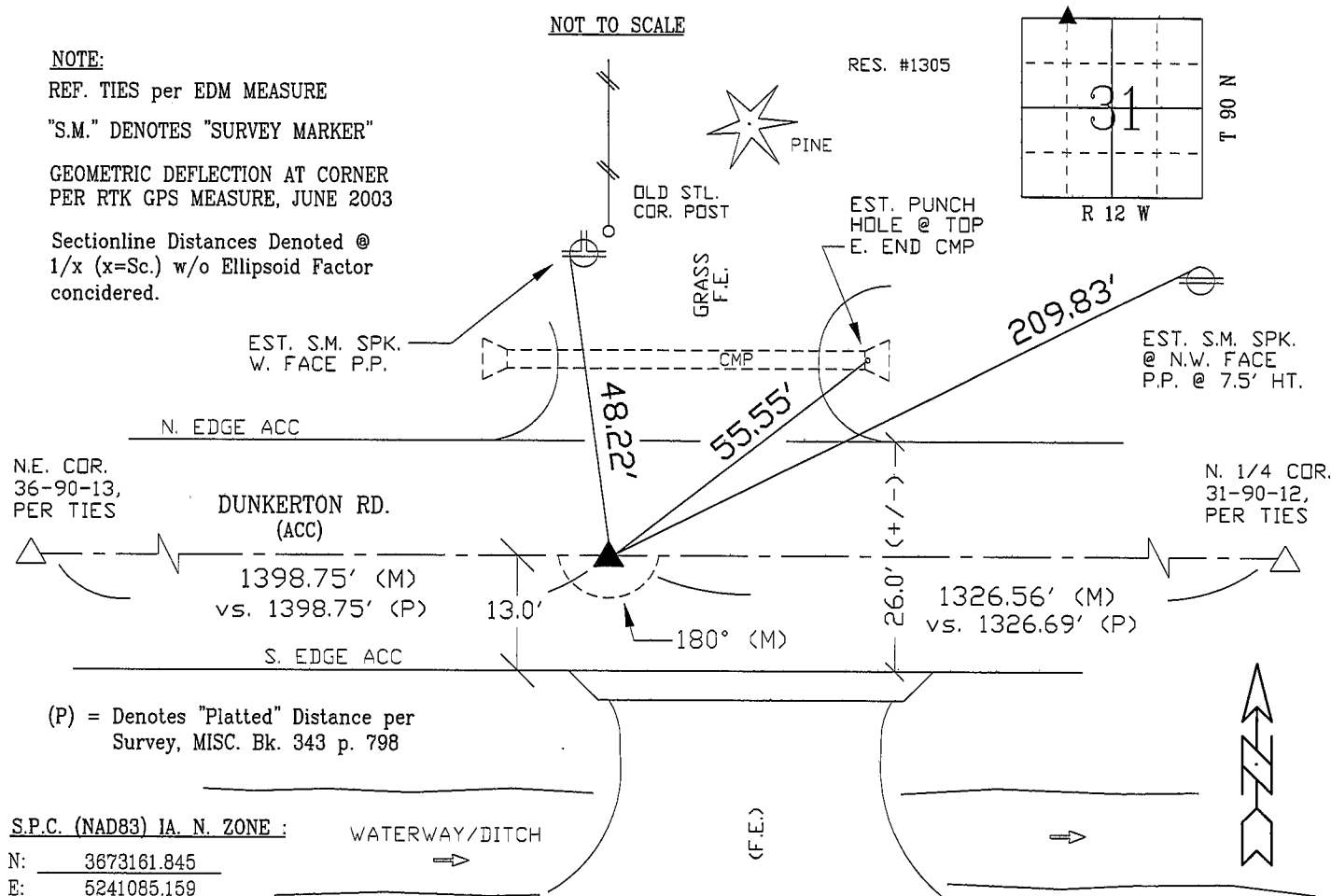
PLAN - VIEW

(Show a minimum of three reference ties to durable physical objects, relevant monuments and physical conditions that will enable recovery of the corner.)

NOTE:

REF. TIES per EDM MEASURE

"S.M." DENOTES "SURVEY MARKER"

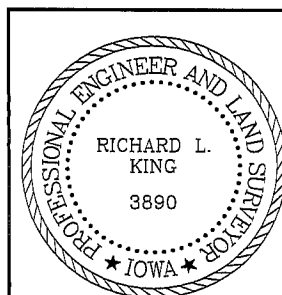
GEOMETRIC DEFLECTION AT CORNER
PER RTK GPS MEASURE, JUNE 2003Sectionline Distances Denoted @
1/x (x=Sc.) w/o Ellipsoid Factor
considered.FIELD SURVEY: G.T. & K.E. 08/12/04
PREPARED BY: G.T. 08/24/04

CERTIFICATION

LIST CORNERS TO BE INDEXED

Corner Section - Township - Range

N.E. COR.			
NW1/4,	31	90 N	12 W
NW1/4 FRAC.			
S.E. COR.			
SW1/4,	30	90 N	12 W
SW1/4 FRAC.			



I hereby certify that this land surveying document was prepared and the related survey work was performed by me or under my direct personal supervision and that I am a duly licensed Land Surveyor under the laws of the State of Iowa.

Richard L. King (date) 9/14/04

License Number 3890My license renewal date is December 31, 2005

Pages or sheets covered by this seal:

This Land Corner Certificate Only.