

Prepared By: VJ Engineering, Matthew A. Kofta, P.L.S., 1501 Technology Parkway, Suite 100, Cedar Falls, Iowa, 50613, (319) 266-5829

United States Public Land Survey Corner Certificate of

Land Survey Monuments situated in Section No. 31, Township No. 90 North,
Range No. 12 West, of the Fifth Principal Meridian, Black Hawk County, Iowa
Previously recorded in N/A

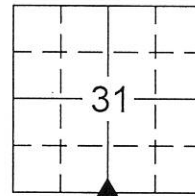
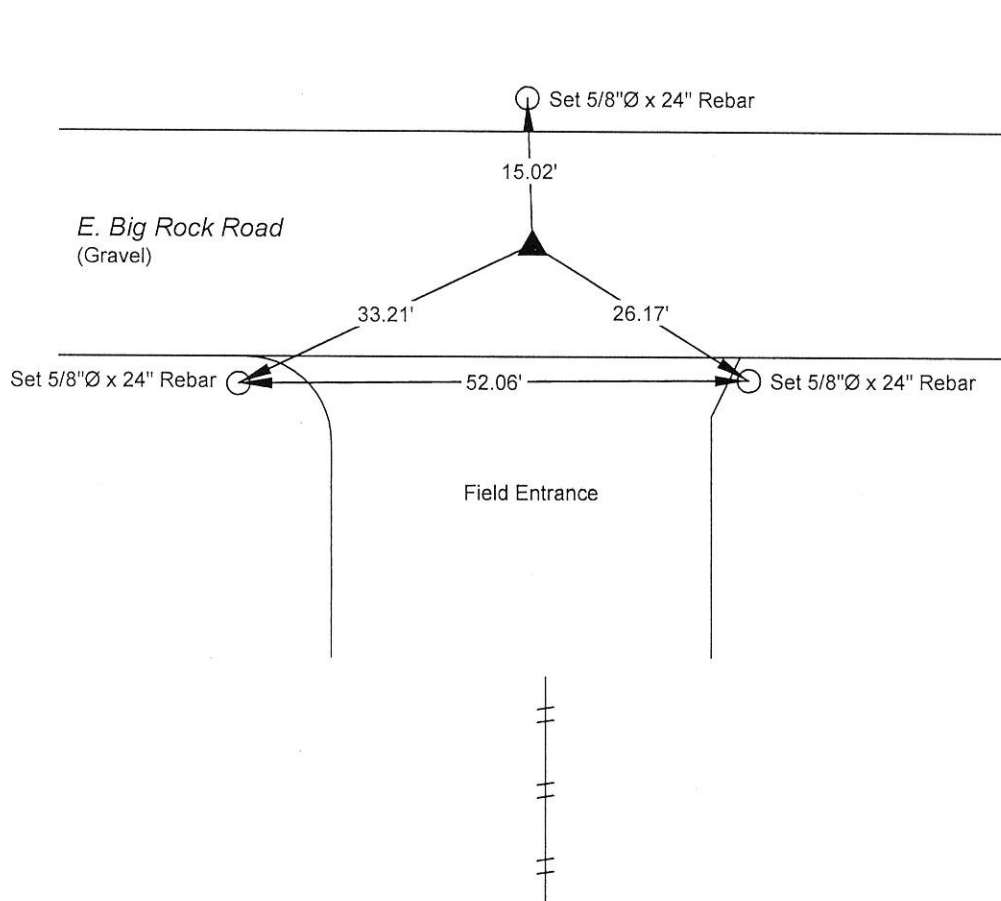
Show reason for preparing this certificate, the evidence and detailed procedures used in establishing the corner positions and monumentation found or placed.

Monument Description and Remarks: South 1/4 -- Section 31 - T90N - R12W

WPA Ties dated 4-12-1938 indicate that the corner is monumented with a Concrete Monument. Searched area and found a 3/4"Ø Rebar 1.0' deep, with remnants of flagging tied to it. Monument agrees with remaining fence, accepted and used 3/4"Ø Rebar as the corner.
This corner certificate is being prepared as there is not one of record.

PLAN - VIEW

(Show a minimum of three reference ties to durable physical objects, relevant monuments and physical conditions that will enable recovery of the corner.)



LEGEND

- ▲ Found Section Corner
- △ Set Section Corner
- Set 5/8"Ø x 24" Rebar w/ Orange Cap Iowa P.L.S. #22561
- ⊙ Power Pole
- Fence Line
- Fence Corner
- Fence Post
- ⊙ Light Pole
- ⊙ Trees Decid. / Conif.
- ⊙ Telephone Pedestal
- Concrete Reference Monument



I hereby certify that this land surveying document was prepared and the related survey work was performed by me or under my direct personal supervision and that I am a duly licensed Land Surveyor under the laws of the State of Iowa.

Matthew A. Kofta
Matthew A. Kofta, P.L.S.
License Number 22561
My license renewal date is December 31, 2020
Pages or sheets covered by this seal: 1-25-19

List Corner to be Indexed

Corner	Section	Twp	Range
South 1/4	31	90 N	12 W



* VJ Engineering
1501 Technology Parkway
Cedar Falls, Iowa - 319-266-5829

Section Corner
Reference Ties

file no.
188099
drawn by
MAK
date
1/25/19