

Reserved for County Recorder's use.

Kyle J. Helland, 6109 Chancellor Drive, Cedar Falls, Iowa 50613-6916, (319)-266-0161

UNITED STATES PUBLIC LAND SURVEY CORNER CERTIFICATE
OF

LAND SURVEY MONUMENTS SITUATED IN SECTION NO. 30, TOWNSHIP NO. 90 NORTH, RANGE
NO. 12 WEST OF THE FIFTH PRINCIPAL MERIDIAN, BLACK HAWK COUNTY, IOWA.
PREVIOUSLY RECORDED IN N/A

(SHOW REASON FOR PREPARING THIS CERTIFICATE, THE EVIDENCE AND DETAILED PROCEDURES USED IN ESTABLISHING THE
CORNER POSITIONS AND MONUMENTATION FOUND OR PLACED.)

MONUMENT DESCRIPTION AND REMARKS:

NO USPLSCC ON FILE. SURVEY COMPLETED IN THE NW FRL 1/4 & SW FRL 1/4 OF SEC. 30-T90N-R12W.

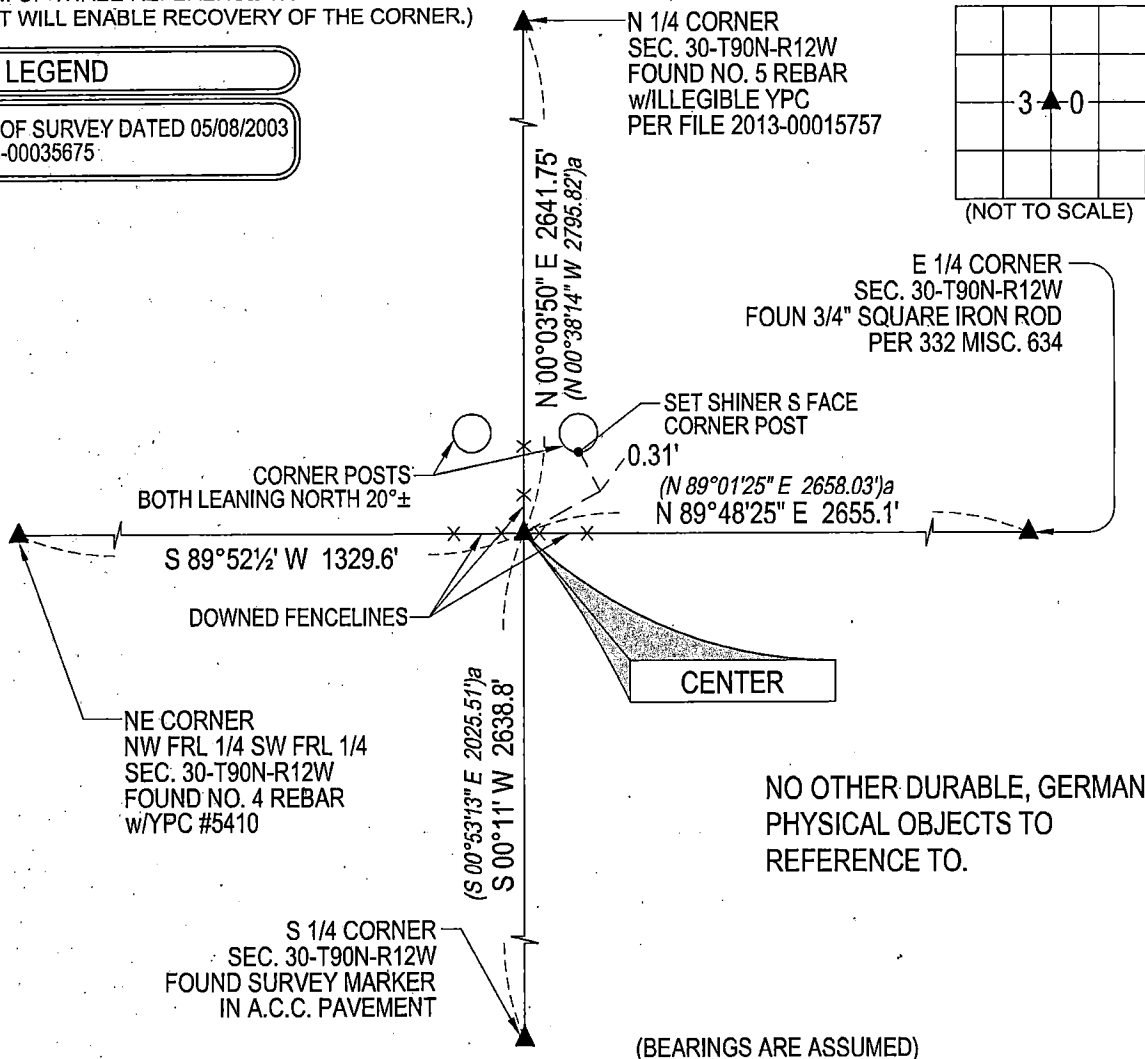
CENTER: NO BLACK HAWK COUNTY ENGINEER TIES AVAILABLE. PLAT OF SURVEY BOOK 251 PAGE 718 DATED
06/30/1983 SHOWS CORNER BUT DOES NOT INDICATE WHAT WAS FOUND OR SET. PLAT OF SURVEY 2003-00035675
DATED 05/08/2003 SHOWS DISTANCES AND BEARINGS TO CORNER. LOCATION INDICATED BY SAID PLAT OF SURVEY
2003-00035675 IS AT THEORETICAL INTERSECTION OF 1/4 1/4 LINES, AND DOES NOT APPEAR ANYTHING WAS FOUND OR
SET. SEARCHED AREA WITH MAGNETIC DETECTOR, PROBED IN 4'± AREA, AND FOUND NOTHING. THEREFORE SET
NO. 4 REBAR w/OPC #23212 AT BASE OF CORNER POSTS OF DOWNED OCCUPATION FENCELINES. UTILIZED SAID SET
REBAR AS CORNER. NO OTHER DURABLE, GERMANE PHYSICAL OBJECTS TO REFERENCE TO.

PLAN VIEW

(SHOW A MINIMUM OF THREE REFERENCE TIES TO DURABLE PHYSICAL OBJECTS, RELEVANT MONUMENTS AND PHYSICAL
CONDITIONS THAT WILL ENABLE RECOVERY OF THE CORNER.)

LEGEND

(0.0')^a PER PLAT OF SURVEY DATED 05/08/2003
FILE #2003-00035675



(BEARINGS ARE ASSUMED)

HES

HELLAND ENGINEERING & SURVEYING, LTD.
6109 Chancellor Drive
Cedar Falls, Iowa 50613-6916
(319)-266-0161

BRASS TAG = 4d. NAIL & 13/16"Ø BRASS TAG DRAWN BY: KDA
SHINER = 1"Ø STEEL SHINER w/MASONRY NAIL
OPC = PLASTIC CAP (O=ORANGE, R=RED, Y=YELLOW)
(00') RECORDED AS FILE NAME: 21-227-29.DWG



I hereby certify that this land surveying document was prepared
and the related survey work was performed by me or under my
direct personal supervision and that I am a duly licensed
Professional Land Surveyor under the laws of the State of Iowa.
Kyle J. Helland 10/15/2021
Kyle J. Helland
License Number 23212
My license renewal date is December 31, 2021.
All pages or sheets are covered by this seal except:

LIST CORNERS TO BE INDEXED			
CORNER	SECTION	TOWNSHIP	RANGE
CENTER	30	90N	12W