

SC
MISC
INDEX
MARGIN
PROOF
COMPARE

BLACK HAWK COUNTY IOWA:SS 14161
FILED FOR RECORD DEC 16, 1998 AT
4:00 P. M. AND RECORDED IN BOOK 332
OF MISC PAGE 634.
Wayne Claassen RECORDER
FEE 1-5.00/
WAYNE CLAASSEN ENGINEERING & SURVEYING

County Recorder

WAYNE CLAASSEN ENGINEERING AND SURVEYING, INC.
P.O. BOX 898 WATERLOO, IOWA 50704-0898

PHONE: (VOICE) 319-235-6294
(FAX) 319-235-0028

UNITED STATES PUBLIC LAND SURVEY CORNER CERTIFICATE

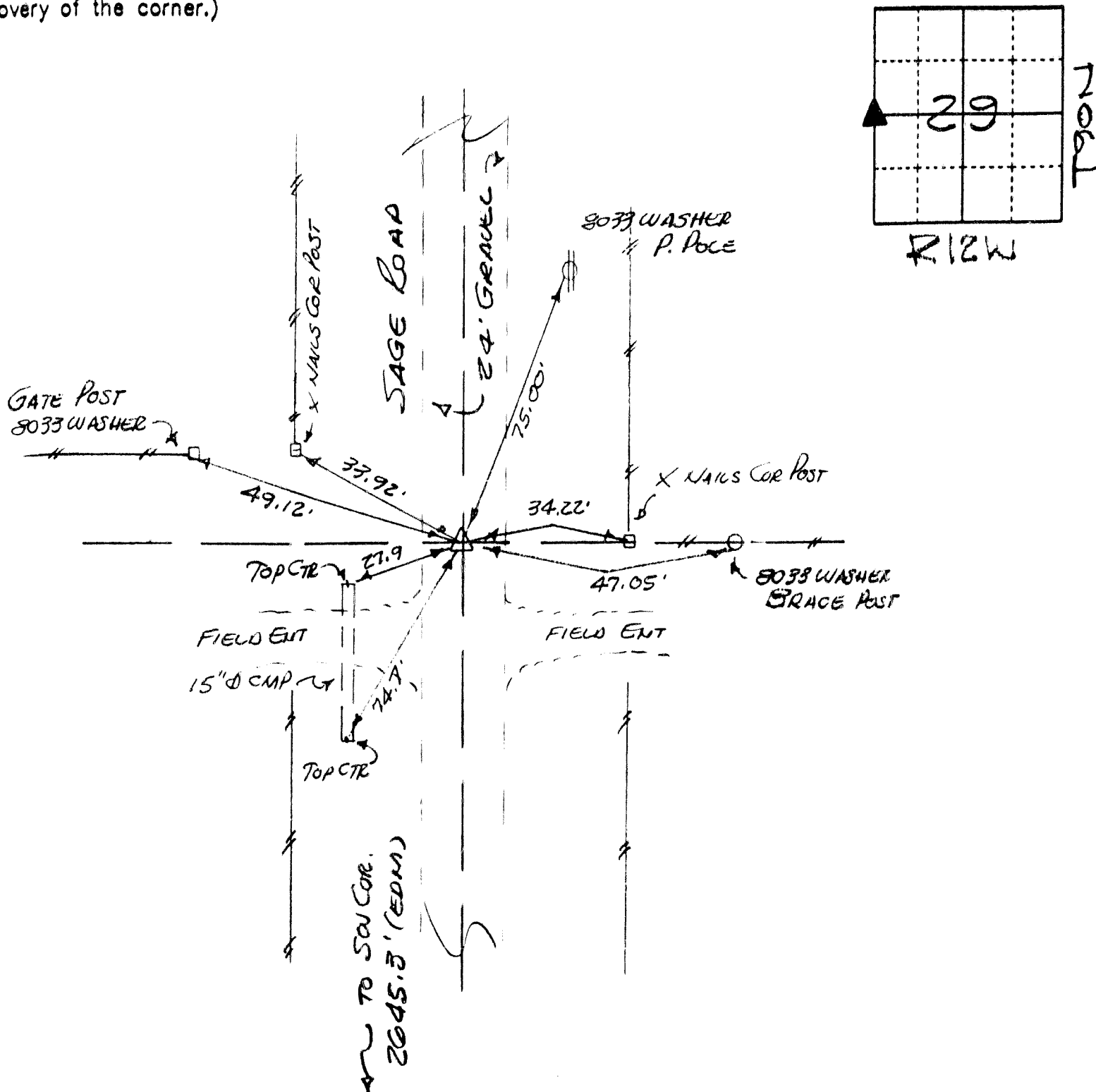
Land Survey Monuments situated in Section 29, Township 90N, Range 12W, of the Fifth Principal Meridian, Black Hawk County, Iowa.
Previously recorded in N/A in County Recorder's Office.
(book, page, document number, etc.)

(Show reason for preparing this certificate, the evidence and detailed procedures used in establishing the corner positions and monumentation found or placed.)

Monument Description and Remarks W 1/4 CORNER. FOUND 3/4" SQUARE ROD 6" DEEP IN GROVE ROAD PER COUNTY TIES.

PLAN - VIEW

(Show a minimum of three reference ties to durable physical objects, relevant monuments and physical conditions that will enable recovery of the corner.)



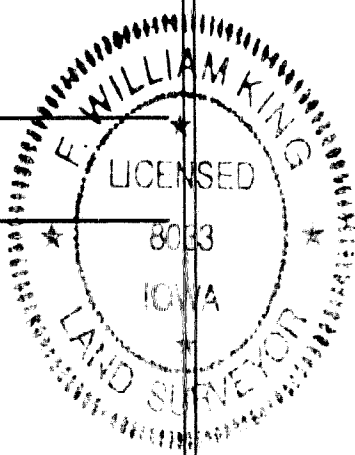
497-45

I hereby certify that the survey work was completed and this certificate was prepared by me or under my direct personal supervision and that I am a duly licensed land surveyor under the laws of the state of Iowa.

Signature: *William King*
(Name typed or printed:) F. WILLIAM KING

Date: DEC. 15, 1998 Lic. No. 8033

SEAL



List Corners to be Indexed

Corners	Section	Twp	Range
W 1/4	29	90N	12W

BOOK 332 PAGE 634