

Reserved for County Recorder's use.



Doc ID: 011937640001 Type: GEN
Recorded: 05/05/2023 at 11:08:49 AM
Fee Amt: \$7.00 Page 1 of 1
Black Hawk County Iowa
SANDIE L. SMITH RECORDER

File 2023-00014774

Kyle J. Helland, 6109 Chancellor Drive, Cedar Falls, Iowa 50613-6916, (319)-266-0161

UNITED STATES PUBLIC LAND SURVEY CORNER CERTIFICATE
OF

LAND SURVEY MONUMENTS SITUATED IN SECTION NO. 28, TOWNSHIP NO. 90 NORTH, RANGE
NO. 12 WEST OF THE FIFTH PRINCIPAL MERIDIAN, BLACK HAWK COUNTY, IOWA.
PREVIOUSLY RECORDED IN FILE #2017-00019250

(SHOW REASON FOR PREPARING THIS CERTIFICATE, THE EVIDENCE AND DETAILED PROCEDURES USED IN ESTABLISHING THE
CORNER POSITIONS AND MONUMENTATION FOUND OR PLACED.)

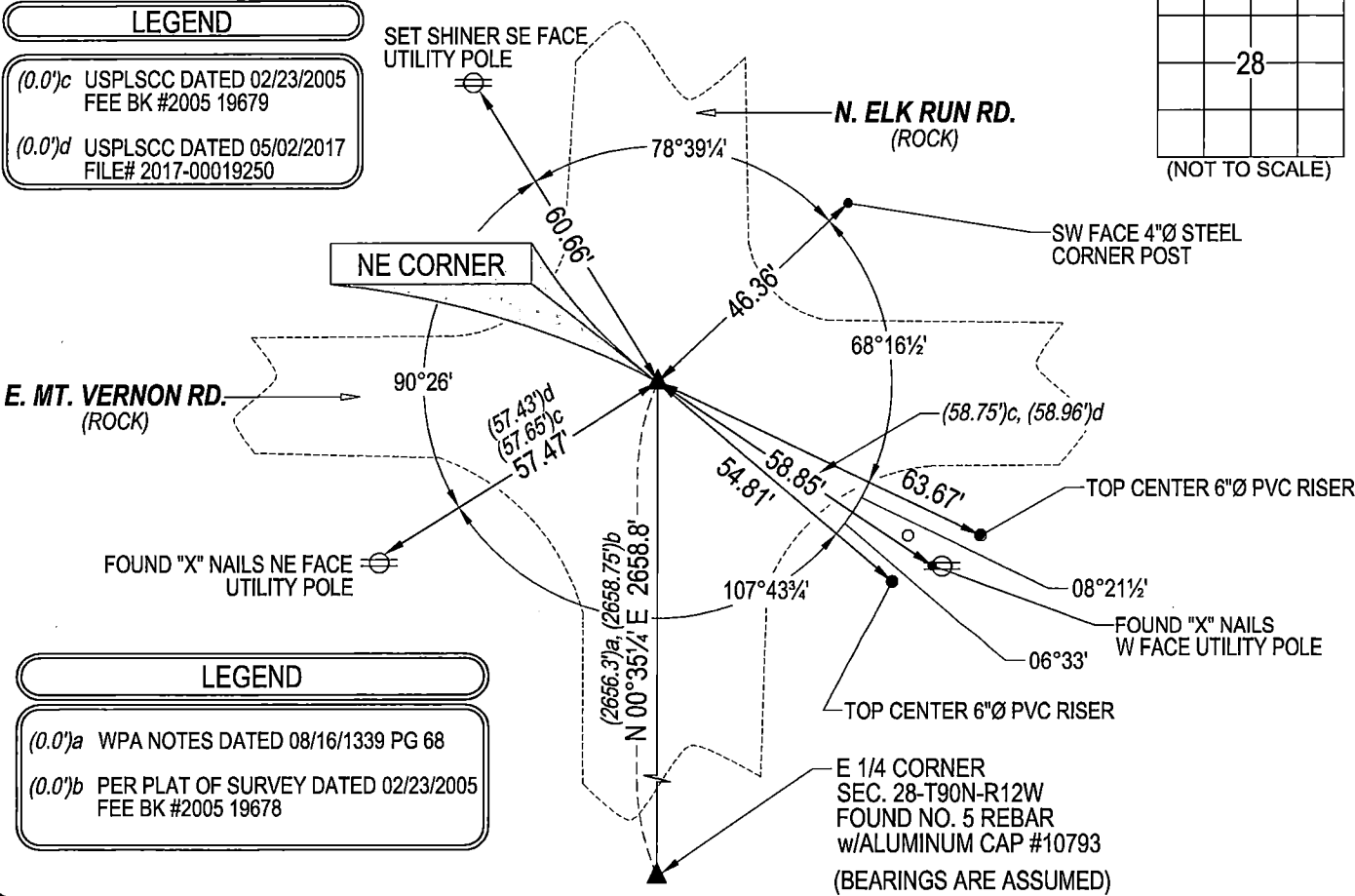
MONUMENT DESCRIPTION AND REMARKS:

MONUMENTATION HAS CHANGED. SURVEY COMPLETED IN THE NW 1/4 OF SEC. 27-T90N-R12W.

NE CORNER: WPA NOTES PAGE 7 DATED 08/16/1939 CALLS FOR [AT LOCATION INDICATED BY RANDOM LINE DUG HOLE
4FT, SQUARE x 18" DEEP. FOUND LIMESTONE 12" x 9" x 3" IRON BAR 1/2" x 31" LONG AND WOOD STAKE 4" x 1" x 18" LONG.
LOWERED ALL EVIDENCE IN PLACE AND SET CM ON TOP WITH CAP MARKED. SET TOP OF CM 12" DEEP.]. BLACK HAWK
COUNTY ENGINEER REFERENCE TIES DATED 10/1974 CALLS FOR [FOUND LIMESTONE, IRON BAR, 2 WOOD STAKES. SET
IRON PIN OCT. 1974.]. USPLSCC FEE BK #2005 19679 DATED 02/23/2005 CALLS FOR [FOUND 20d SPIKE AND INVERTED RR
SPIKE AT THE NORTHWEST CORNER.]. USPLSCC FILE #2017-00019250 DATED 05/02/2017 CALLS FOR [THE PREVIOUSLY
RECORDED SECTION CORNER INDICATES "FOUND 20d SPIKE AND INVERTED RR SPIKE" AND "USED THE 20D SPIKE" FOR
THE MONUMENT OF THIS CORNER. WHILE RECOVERING THIS CORNER WE FOUND BOTH MONUMENTS BENT.
REMOVED AND CONTINUE TO EXCAVATE THE AREA AND FOUND A 3/4"Ø IRON PIN 6" DEEP. ACCEPTED THE DEEPER
MONUMENT FOR PERPETUATION OF THIS CORNER.]. SEARCHED AREA WITH MAGNETIC DETECTOR AND EXCAVATED,
FOUND STANDARD CONCRETE MONUMENT WITH BRASS CAP (26" DEEP), SET NO. 4 REBAR WITH LICENSE #23212
ABOVE SAID MONUMENT.

PLAN VIEW

(SHOW A MINIMUM OF THREE REFERENCE TIES TO DURABLE PHYSICAL OBJECTS, RELEVANT MONUMENTS AND PHYSICAL
CONDITIONS THAT WILL ENABLE RECOVERY OF THE CORNER.)





HELLAND ENGINEERING & SURVEYING, LTD.
6109 Chancellor Drive
Cedar Falls, Iowa 50613-6916
(319)-266-0161

BRASS TAG = 4d. NAIL & 13/16"Ø BRASS TAG DRAWN BY: CDR
SHINER = 1"Ø STEEL SHINER w/MASONRY NAIL
OPC = PLASTIC CAP (O=ORANGE, R=RED, Y=YELLOW)
(00') RECORDED AS FILE NAME: 23-128-27.DWG



I hereby certify that this land surveying document was prepared
and the related survey work was performed by me or under my
direct personal supervision and that I am a duly licensed
Professional Land Surveyor under the laws of the State of Iowa.
Kyle J. Helland 05/03/2023
Kyle J. Helland
License Number 23212
My license renewal date is December 31, 2023.
All pages or sheets are covered by this seal except:

LIST CORNERS TO BE INDEXED			
CORNER	SECTION	TOWNSHIP	RANGE
NE CORNER	28	90N	12W
SE CORNER	21	90N	12W
SW CORNER	22	90N	12W
NW CORNER	27	90N	12W