

Prepared by & Return to: Herald - Reicks Surveying, 2206 East Bremer Avenue, Waverly, IA 50677, Ph. 319-483-5187

United States Public Land Survey Corner Certificate

Land Survey Monument situated in
Section **28**, Township **90** North, Range **12** West of the Fifth Principal Meridian, **Black Hawk** County, Iowa.
On file in **Document #2005-19679** in the County Recorder's office.

This certificate is being prepared in compliance with Iowa Code Chapter 355.11 because:

-
- ☐

☐

☒

☒

☐
- There is no certificate on file for this corner.

There are no longer three valid ties of record.

There are changes to reference ties of record.

There is change of monumentation of record.

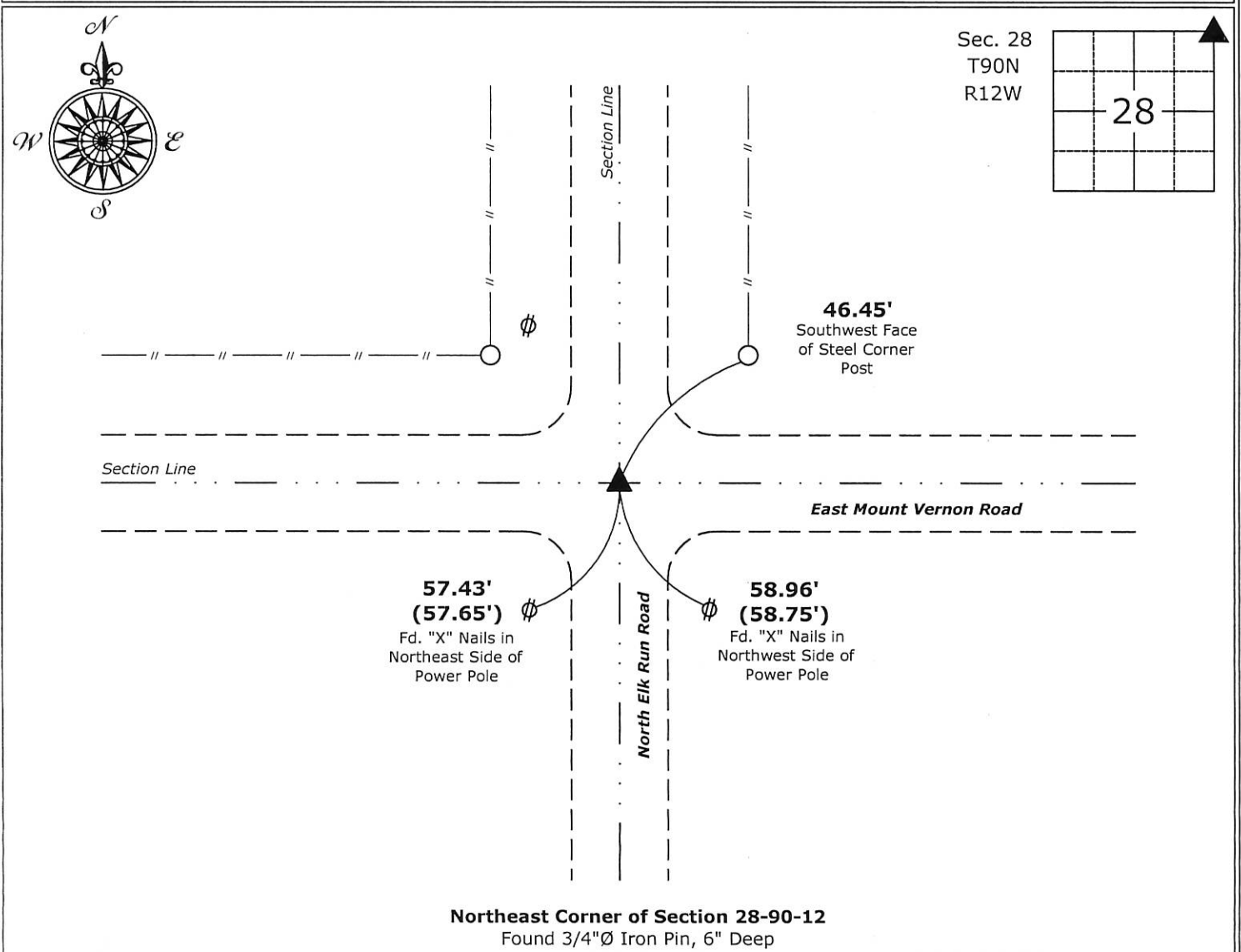
To clarify description of record monument (ties).

Monument Description and Remarks:

Northeast Corner: The previously recorded Section Corner Certificate indicates "Found 20d spike and inverted RR spike" and "used the 20d spike" for the monument of this corner. While recovering this corner we found both monuments bent. Removed and continue to excavate the area and Found a 3/4"Ø Iron Pin, 6" deep. Accepted the deeper monument for the perpetuation of this corner.

Plan View

(Show a minimum of three reference ties to durable physical objects, relevant monuments and physical conditions that will enable recovery of the corner.)



Northeast Corner of Section 28-90-12
Found 3/4"Ø Iron Pin, 6" Deep



I hereby certify that this land surveying document was prepared and the related survey work was performed by me or under my direct personal supervision and that I am a duly licensed Land Surveyor under the laws of the State of Iowa.

Isaiah M. Reicks 5-2-17
Isaiah M. Reicks Date:

License number 22468
My license renewal date is December 31, 2017.
Sheets covered by this seal: Individual sheet only

List Corner to be Indexed

Corner	Section	Twp.	Range
NE	28	90	12

Project Number: 20167-516

FB: Black Hawk 10, Pgs. 17 & 19