

Reserved for County Recorder's use.

Doc ID: 011937650001 Type: GEN
Recorded: 05/05/2023 at 11:09:06 AM
Fee Amt: \$7.00 Page 1 of 1
Black Hawk County Iowa
SANDIE L. SMITH RECORDER
File **2023-00014775**

* Kyle J. Helland, 6109 Chancellor Drive, Cedar Falls, Iowa 50613-6916, (319)-266-0161

UNITED STATES PUBLIC LAND SURVEY CORNER CERTIFICATE
OF

LAND SURVEY MONUMENTS SITUATED IN SECTION NO. 28, TOWNSHIP NO. 90 NORTH, RANGE
NO. 12 WEST OF THE FIFTH PRINCIPAL MERIDIAN, BLACK HAWK COUNTY, IOWA.
PREVIOUSLY RECORDED IN FEE BOOK #2005 19679.

(SHOW REASON FOR PREPARING THIS CERTIFICATE, THE EVIDENCE AND DETAILED PROCEDURES USED IN ESTABLISHING THE
CORNER POSITIONS AND MONUMENTATION FOUND OR PLACED.)

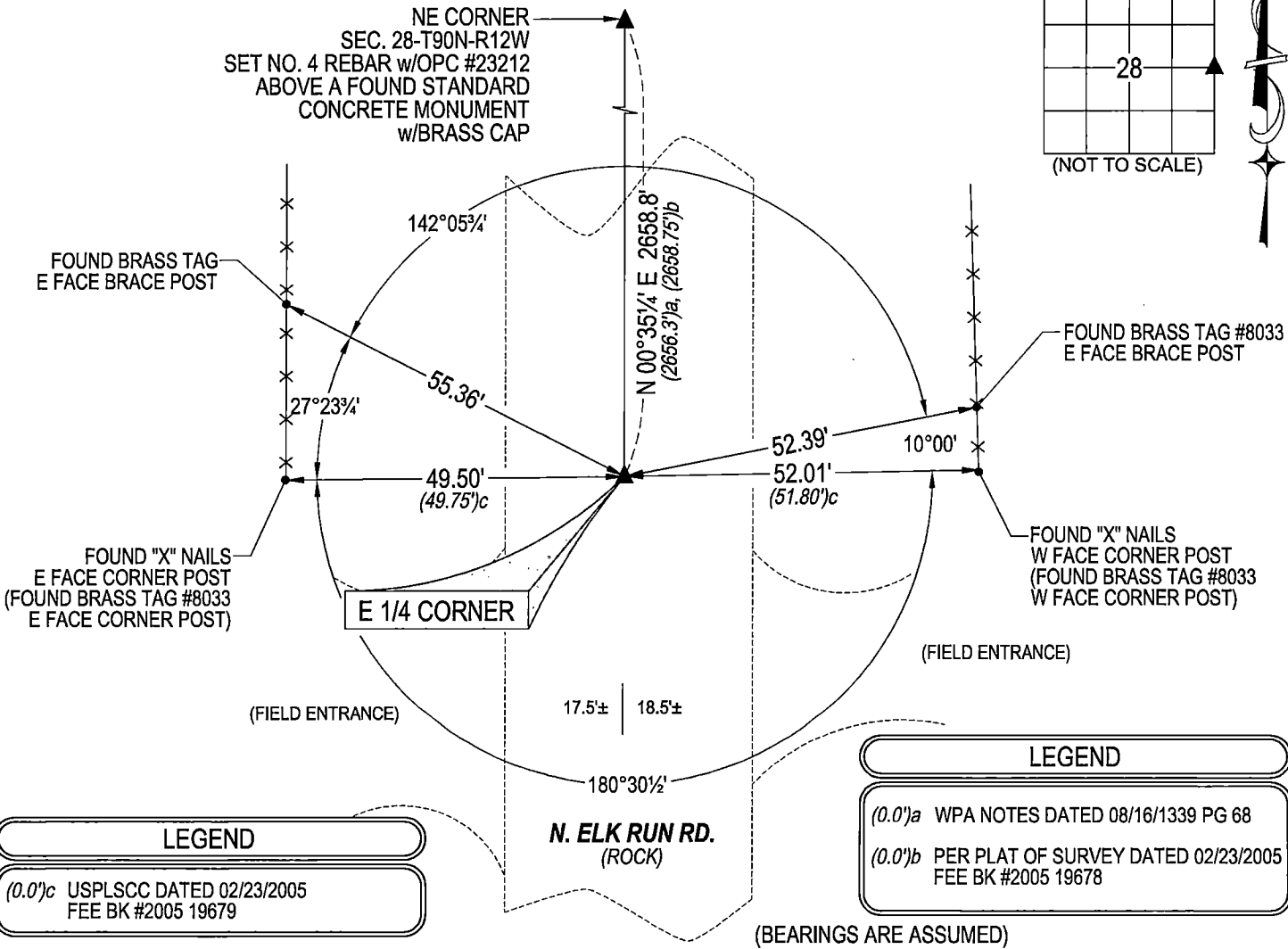
MONUMENT DESCRIPTION AND REMARKS:

MONUMENTATION HAS CHANGED. SURVEY COMPLETED IN THE NW 1/4 OF SEC. 27-T90N-R12W.

→ **E 1/4 CORNER:** WPA NOTES PAGE 28 DATED 11/13/1941 CALLS FOR [AT LOCATION INDICATED BY RANDOM LINE DUG
HOLE 5' SQUARE 18" DEEP. FOUND NOTHING. ESTABLISHED CORNER. SET TOP OF CEMENT MONUMENT 12" DEEP].
BLACK HAWK COUNTY ENGINEER REFERENCE TIES DATED 10/1974 CALLS FOR [COR. EST. MON. MOVED 33' FROM WEST
FENCE. MON 12" DEEP BAR PLACED SEPT. 7 1950 NEW REFERENCES SET IRON PIN OCT 1974.]. USPLSCC FEE BOOK
#2005 19679 DATED 02/23/2005 CALLS FOR [FOUND 5/8" REBAR AT THE WEST 1/4 CORNER.]. SEARCHED AREA WITH
MAGNETIC DETECTOR FOUND NO. 5 REBAR WITH ALUMINUM CAP #10793. UTILIZED SAID NO. 5 REBAR WITH ALUMINUM
CAP #10793 AS CORNER.

PLAN VIEW

(SHOW A MINIMUM OF THREE REFERENCE TIES TO DURABLE PHYSICAL OBJECTS, RELEVANT MONUMENTS AND PHYSICAL
CONDITIONS THAT WILL ENABLE RECOVERY OF THE CORNER.)



HES HELLAND ENGINEERING & SURVEYING, LTD.
6109 Chancellor Drive
Cedar Falls, Iowa 50613-6916
(319)-266-0161

BRASS TAG = 4d. NAIL & 13/16"Ø BRASS TAG DRAWN BY: CDR
SHINER = 1"Ø STEEL SHINER w/MASONRY NAIL
OPC = PLASTIC CAP (O=ORANGE, R=RED, Y=YELLOW)
(00') RECORDED AS FILE NAME: 23-128-26.DWG

PROFESSIONAL LAND SURVEYOR
KYLE J. HELLAND
23212
IOWA

I hereby certify that this land surveying document was prepared
and the related survey work was performed by me or under my
direct personal supervision and that I am a duly licensed
Professional Land Surveyor under the laws of the State of Iowa.
Kyle J. Helland 12/31/2023
Kyle J. Helland
License Number 23212
My license renewal date is December 31, 2023.
All pages or sheets are covered by this seal except:

LIST CORNERS TO BE INDEXED			
CORNER	SECTION	TOWNSHIP	RANGE
E 1/4 CORNER	28	90N	12W
W 1/4 CORNER	27	90N	12W