

Paul H. Helland, 1107 Technology Parkway, Cedar Falls, Iowa 50613-6951, (319)-266-0161

UNITED STATES PUBLIC LAND SURVEY CORNER CERTIFICATE
OF

LAND SURVEY MONUMENTS SITUATED IN SECTION NO. 28, TOWNSHIP NO. 90 NORTH, RANGE
NO. 12 WEST OF THE FIFTH PRINCIPAL MERIDIAN, BLACK HAWK COUNTY, IOWA.
PREVIOUSLY RECORDED IN N/A

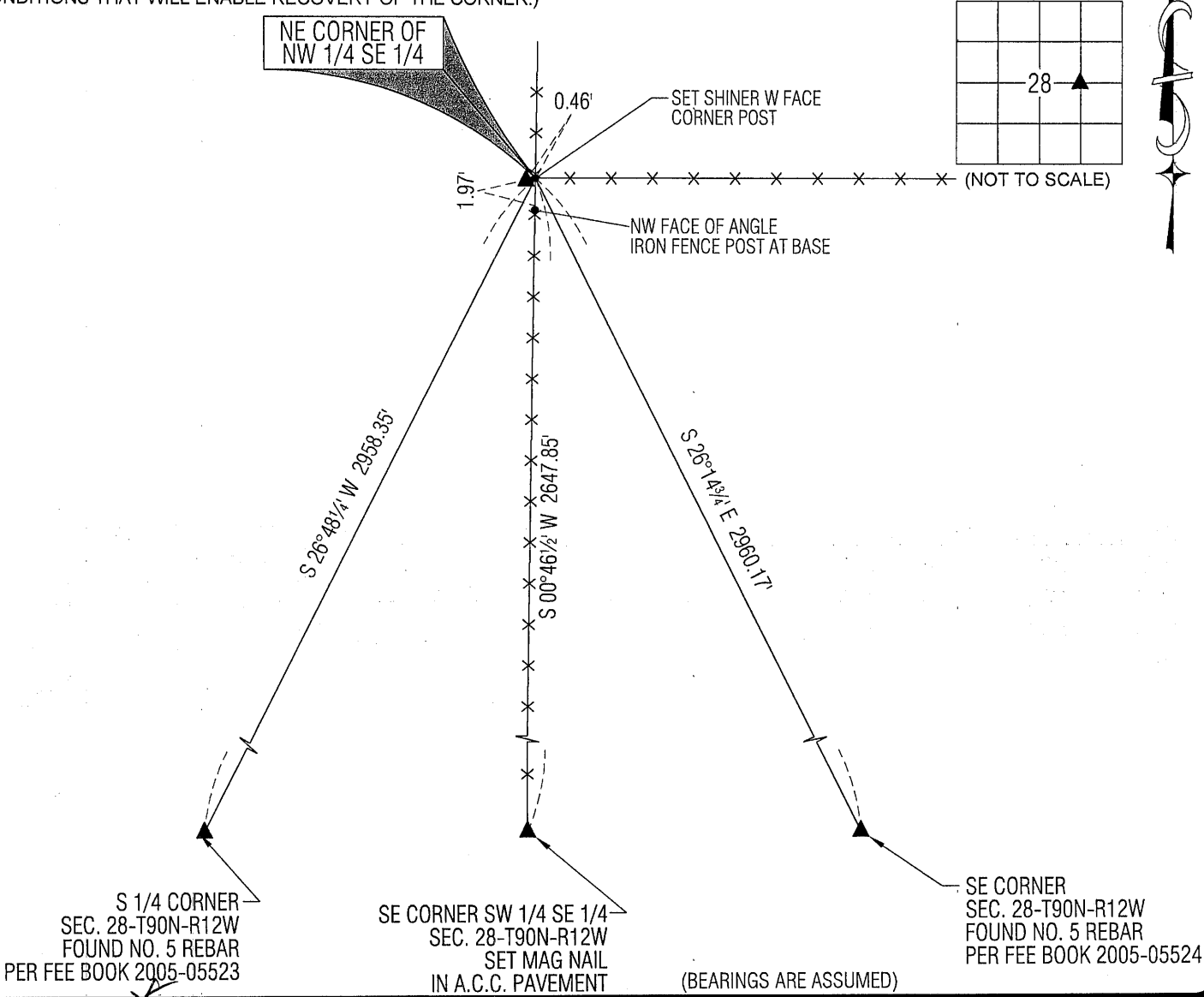
(SHOW REASON FOR PREPARING THIS CERTIFICATE, THE EVIDENCE AND DETAILED PROCEDURES USED IN ESTABLISHING THE
CORNER POSITIONS AND MONUMENTATION FOUND OR PLACED.)

MONUMENT DESCRIPTION AND REMARKS:
NO USPLSCC ON FILE. SURVEY COMPLETED IN THE SE 1/4 OF SEC. 28-T90N-R12W.

→ **NE CORNER NW 1/4 SE 1/4:** NO BLACK HAWK ENGINEERING TIES AVAILABLE. SEARCHED AREA WITH PROBE HIT STONE
ON WESTERLY EDGE OF CORNER POST. FOUND A BLUE GRANITE STONE AT WEST EDGE OF CORNER POST AT INTERSECTING
NORTH-SOUTH AND EAST FENCELINES. STONE MEASURED 9" EAST-WEST, 8" NORTH-SOUTH, AND 5" TALL. SAID STONE
WAS FOUND FLAT, ROTATED STONE TO DISPLAY DEFINED HIGH POINT OF STONE. SET NO. 4 REBAR 0.23' FROM HIGH POINT
ON NORTH SIDE OF SAID STONE FOR MAGNETIC DETECTION. BOTH STONE AND REBAR WERE AT A DEPTH OF 0.6' BELOW
SURFACE.

PLAN VIEW

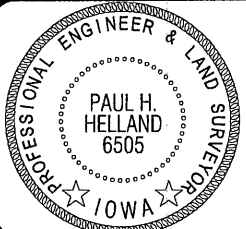
(SHOW A MINIMUM OF THREE REFERENCE TIES TO DURABLE PHYSICAL OBJECTS, RELEVANT MONUMENTS AND PHYSICAL
CONDITIONS THAT WILL ENABLE RECOVERY OF THE CORNER.)





HELLAND ENGINEERING & SURVEYING, LTD.
1107 Technology Parkway
Cedar Falls, Iowa 50613-6951
(319)-266-0161

SHINER = 8d NAIL & 1 5/16"Ø METAL SHINER
BRASS TAG = 8d NAIL & 13/16"Ø BRASS TAG
OPC = PLASTIC CAP (O=ORANGE, R=RED, Y=YELLOW)
(00') RECORDED AS FILE NAME: 13-169-41.DWG



I hereby certify that this land surveying document was prepared
and the related survey work was performed by me or under my
direct personal supervision and that I am a duly licensed
Professional Land Surveyor under the laws of the State of Iowa.
Paul H. Helland
Paul H. Helland
License Number 6505
My license renewal date is December 31, 2013.
All pages or sheets are covered by this seal except:
7/5/13

CORNER	SECTION	TOWNSHIP	RANGE
NE COR. NW 1/4 SE 1/4	28	90N	12W
SE COR. SW 1/4 NE 1/4	28	90N	12W
SW COR. SE 1/4 NE 1/4	28	90N	12W
NW COR. NE 1/4 SE 1/4	28	90N	12W