

Document Number: 2007004060  
Date: Aug 17, 2006 4:30:00 pm  
Aud Fee: 0.00 Rec Fee: 5.00  
Trans Tax: 0.00 Rec Management Fee 1.00  
E-Com Fee: 1.00 Non-Standard Page Fee: 0.00  
Filed for record in Black Hawk County, Iowa  
Patricia S. Sass, County Recorder

Kirk D. Eschliman, P.L.S. Iowa Lic. No. 9961, 723 Broadway Street, Waterloo, Iowa 50703 - Phone: 319-234-0509

UNITED STATES PUBLIC LAND SURVEY CORNER CERTIFICATE  
OF

LAND SURVEY MONUMENTS SITUATED IN SECTION TWENTY-SEVEN (27), TOWNSHIP NINETY (90) NORTH  
RANGE TWELVE (12) WEST, OF THE FIFTH PRINCIPAL MERIDIAN, BLACK HAWK COUNTY, IOWA.  
PREVIOUSLY RECORDED IN (NOT PREVIOUSLY RECORDED) (BOOK, PAGE, DOCUMENT NUMBER, ETC.) IN THE COUNTY RECORDER'S OFFICE.

(SHOW REASON FOR PREPARING THIS CERTIFICATE, THE EVIDENCE AND DETAILED PROCEDURES USED IN ESTABLISHING THE CORNER POSITIONS AND MONUMENTATION FOUND OR PLACED.)

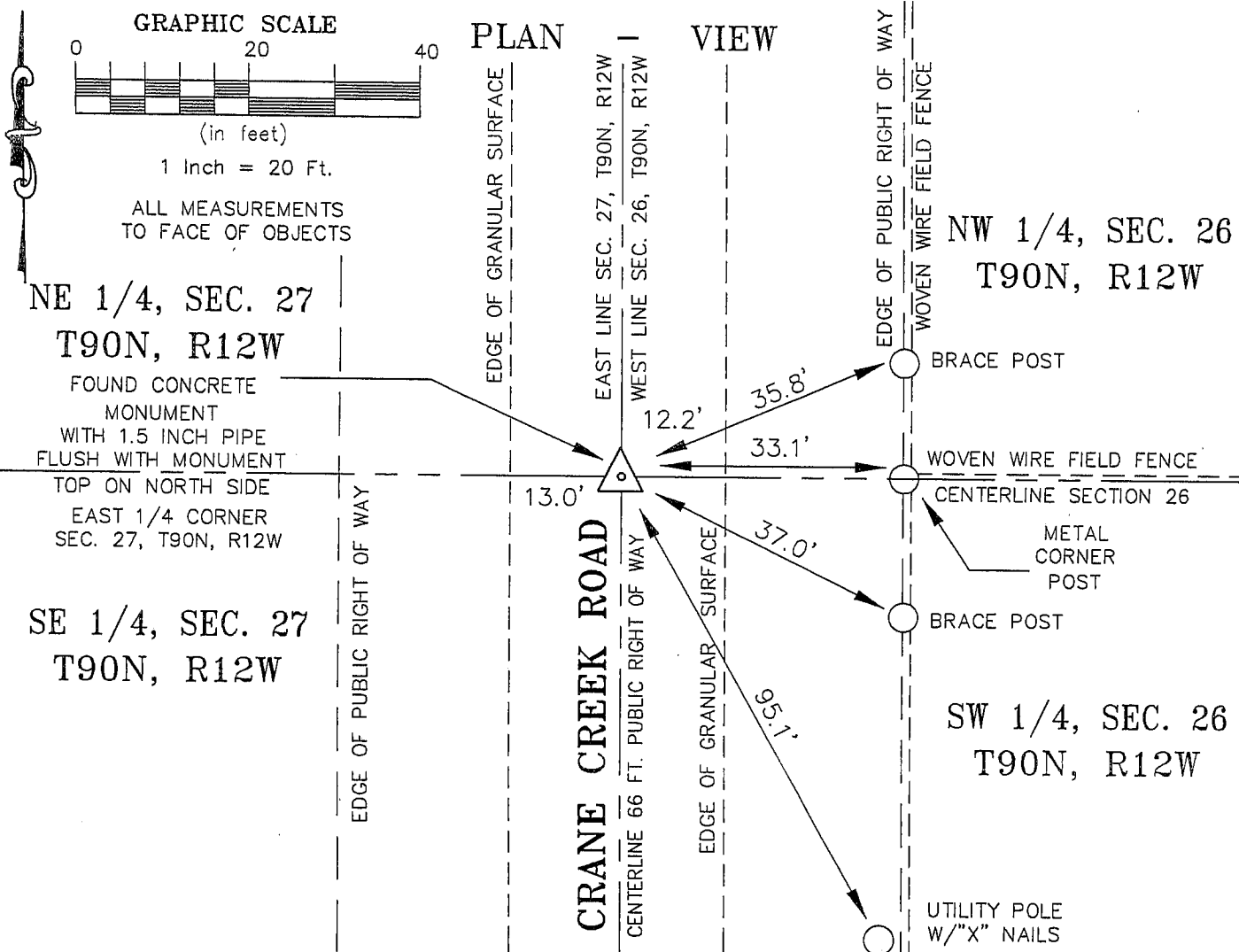
MONUMENT DESCRIPTION AND REMARKS:

CURRENT SECTION CORNER CERTIFICATE NOT ON FILE IN THE BLACK HAWK COUNTY ENGINEER'S OFFICE.

FOUND CONCRETE MONUMENT WITHOUT CAP, BELOW GRANULAR SURFACE OF CRANE CREEK ROAD, WITH

1.5 INCH OPEN PIPE ON NORTH SIDE, FLUSH WITH TOP OF MONUMENT. MONUMENT USED IN REFERENCED

FIELD SURVEY IN NORTHEAST CORNER OF SECTION 27.



I HEREBY CERTIFY THAT THIS LAND SURVEYING DOCUMENT WAS PREPARED AND RELATED SURVEY WORK WAS PERFORMED BY ME OR UNDER MY DIRECT PERSONAL SUPERVISION AND THAT I AM A DULY LICENSED LAND SURVEYOR UNDER THE LAWS OF THE STATE OF IOWA.

*Kirk D. Eschliman*

DATE: 07/28/2004

KIRK D. ESCHLIMAN, P.L.S. IOWA LIC. NO. 9961  
MY LICENSE RENEWAL DATE IS DECEMBER 31, 2007  
PAGES OR SHEETS COVERED BY THIS SIGNATURE & SEAL: SHEET 1 OF 1

FOR: MATTHEW FUELING  
UNASSIGNED ADDRESS CRANE CREEK ROAD  
WATERLOO, IOWA 50703

REQ. BY: RICK FUELING  
DUNKERTON, IOWA 50626



KESS & ASSOCIATES, INC.  
PROFESSIONAL LAND SURVEYORS : 723 BROADWAY, WATERLOO, IOWA 50703-5811  
DATE: 07/21/2006 C.A.D.D. FILE: 05A53SCC1.DWG PROJECT NO.: 05A53

List of corners to be indexed:

Corner	Section	Township	Range
E 1/4	27	T90N	R12W

