

Jeffrey P. Helland, 1107 Technology Parkway, Cedar Falls, Iowa 50613-6951, (319)-266-0161

UNITED STATES PUBLIC LAND SURVEY CORNER CERTIFICATE
OF

LAND SURVEY MONUMENTS SITUATED IN SECTION NO. 26, TOWNSHIP NO. 90 NORTH, RANGE
NO. 12 WEST OF THE FIFTH PRINCIPAL MERIDIAN, BLACK HAWK COUNTY, IOWA.
PREVIOUSLY RECORDED IN N/A

(SHOW REASON FOR PREPARING THIS CERTIFICATE, THE EVIDENCE AND DETAILED PROCEDURES USED IN ESTABLISHING THE
CORNER POSITIONS AND MONUMENTATION FOUND OR PLACED.)

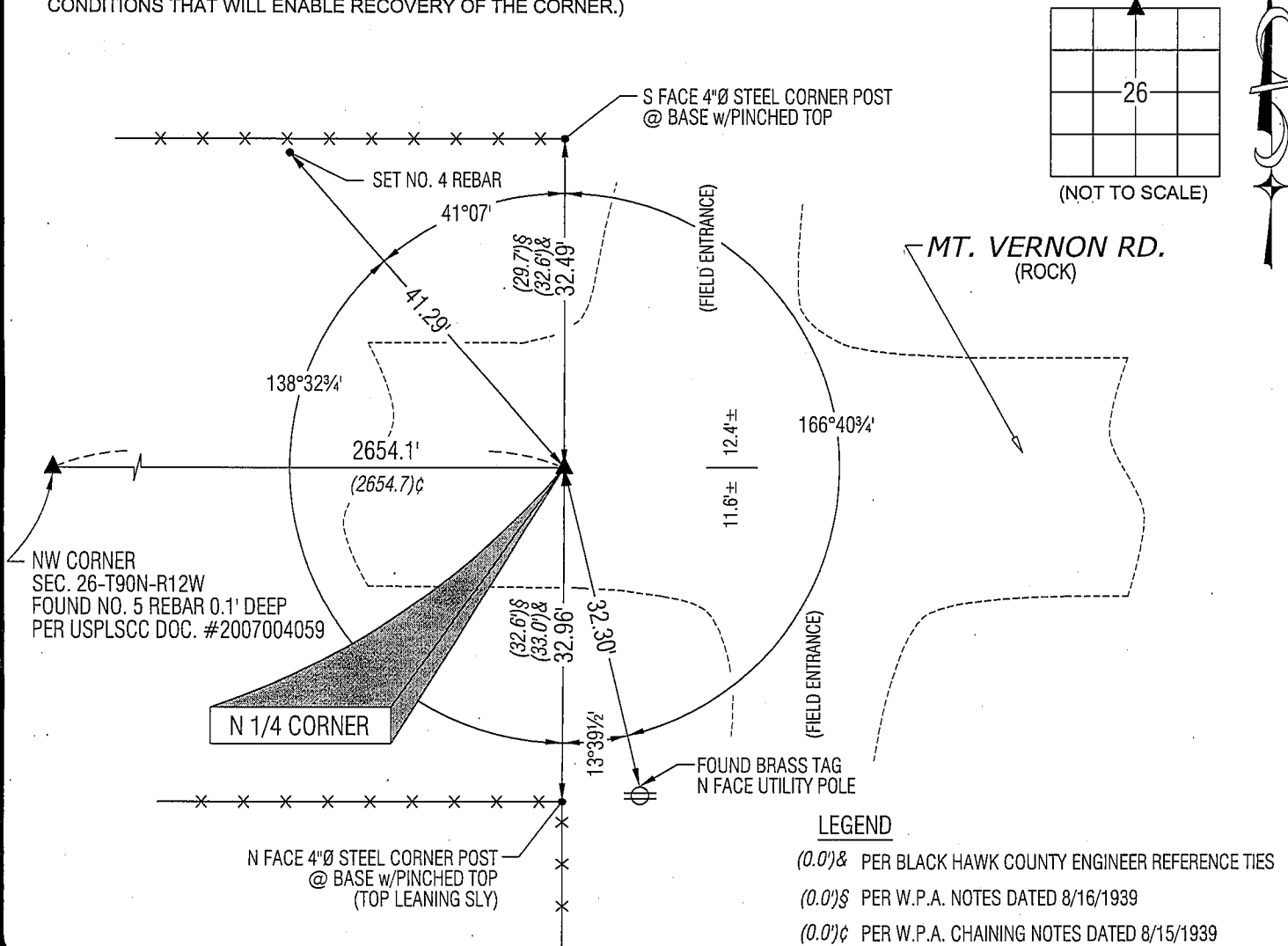
MONUMENT DESCRIPTION AND REMARKS:

NO USPLSCC ON FILE. SURVEY COMPLETED IN THE SW 1/4 OF SEC. 23-T90N-R12W.

N 1/4 CORNER: BLACK HAWK COUNTY AUDITOR SURVEYOR'S RECORD BK 1 PG 107 DATED 10/17/1866 CALLS FOR [MOUND]. BLACK HAWK COUNTY ENGINEER FIELD BOOK 139 PG 49 CALLS FOR [FOUND STONE & SET IRON BAR]. W.P.A. CHAINING NOTES DATED 8/15/1939 CALLS FOR [FOUND NIGGERHEAD 14"x10"x7" AND IRON BAR 1/2"x24" LONG. SET C.M. 12" DEEP.]. W.P.A. NOTES DATED 8/16/1939 CALLS FOR [AT LOCATION INDICATED BY RANDOM LINE DUG 4FT. SQUARE x 18" DEEP. FOUND NIGGERHEAD 14"x10"x7" AND IRON BAR 1/2"x24" LONG. LOWERED ALL EVIDENCE IN PLACE AND SET CM ON TOP WITH CAP MARKED. SET TOP OF C.M. 12" DEEP.]. FOUND NO. 6 REBAR 1.52" LONG 0.1' DEEP. REMOVED AND PROBED AT LOCATION OF REBAR. HIT SOLID OBJECT BELIEVED TO BE A C.M. RESET REBAR AT ITS ORIGINAL LOCATION, AND UTILIZED SAID NO. 6 REBAR AS CORNER.

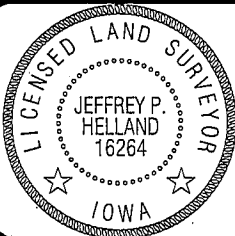
PLAN VIEW

(SHOW A MINIMUM OF THREE REFERENCE TIES TO DURABLE PHYSICAL OBJECTS, RELEVANT MONUMENTS AND PHYSICAL
CONDITIONS THAT WILL ENABLE RECOVERY OF THE CORNER.)



HES HELLAND ENGINEERING & SURVEYING, LTD.
1107 Technology Parkway
Cedar Falls, Iowa 50613-6951
(319)-266-0161

SHINER = 8D NAIL & 1 5/16\"/>



I hereby certify that this land surveying document was prepared
and the related survey work was performed by me or under my
direct personal supervision and that I am a duly licensed Land
Surveyor under the laws of the State of Iowa.
Jeffrey P. Helland 7/11/08
Jeffrey P. Helland
License Number 16264
My license renewal date is December 31, 2009.
All pages or sheets are covered by this seal except:

LIST CORNERS TO BE INDEXED			
CORNER	SECTION	TOWNSHIP	RANGE
N 1/4 CORNER	26	90N	12W
S 1/4 CORNER	23	90N	12W