

\* Herold - Reicks Surveying, 25 1/2 East Main Street, Suite 204, New Hampton, IA 50659, Ph. 641-394-2725

## UNITED STATES PUBLIC LAND SURVEY CORNER CERTIFICATE

Land Survey Monuments situated in Section **25**, Township **90** North, Range **12** West of the Fifth Principal Meridian, **Black Hawk** County, Iowa. Not previously recorded in the County Recorder's office.

This certificate is being prepared in compliance with Iowa Code Chapter 355.11 because:

- ☒ There is no certificate on file for this corner.  
☐ There are no longer three valid ties of record.  
☐ There are changes to reference ties of record.  
☐ There is change of monumentation of record.  
☐ To clarify description of record monument (ties).

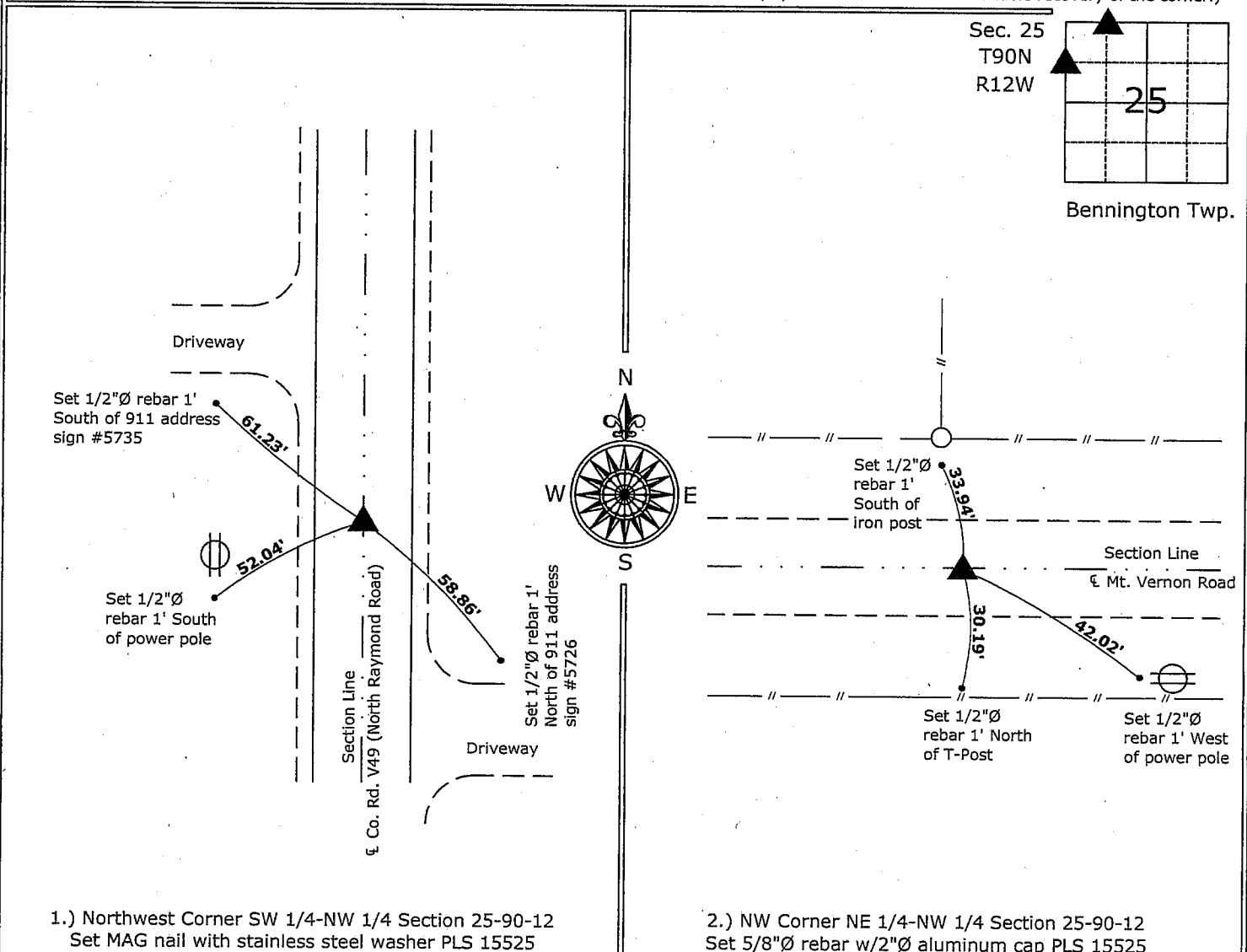
Monument Description and Remarks:

1.) **Northwest Corner SW 1/4-NW 1/4:** Set MAG nail with stainless steel washer PLS 15525 imidway and online between the W 1/4 Corner and NW Corner.

2.) **Northwest Corner NE 1/4-NW 1/4:** Set 5/8"Ø rebar with 2"Ø aluminum cap PLS 15525 midway and online between the NW Corner and N 1/4 Corner.

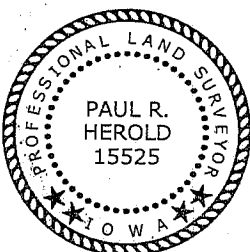
### PLAN - VIEW

(Show a minimum of three reference ties to durable physical objects, relevant monuments and physical conditions that will enable recovery of the corner.)



1.) Northwest Corner SW 1/4-NW 1/4 Section 25-90-12  
Set MAG nail with stainless steel washer PLS 15525

2.) NW Corner NE 1/4-NW 1/4 Section 25-90-12  
Set 5/8"Ø rebar w/2"Ø aluminum cap PLS 15525



I hereby certify that this land surveying document was prepared and the related survey work was performed by me or under my direct personal supervision and that I am a duly licensed Land Surveyor under the laws of the State of Iowa.

Paul R. Herold 1-12-09  
Paul R. Herold Date:

License number 15525  
My license renewal date is December 31, 2008.  
Sheets covered by this seal: Individual sheet only

List Corners to be Indexed			
Corners	Section	Twp.	Range
NW-SW-NW	25	90	12
NW-NE-NW	25	90	12
Project Number: 2008-141			
FB: Black Hawk County 1, Pgs. 1-2			