

*Herold - Reicks Surveying, 25 1/2 East Main Street, Suite 204, New Hampton, IA 50659, Ph. 641-394-2725*

## UNITED STATES PUBLIC LAND SURVEY CORNER CERTIFICATE

Land Survey Monuments situated in Section **25**, Township **90** North, Range **12** West of the Fifth Principal Meridian, **Black Hawk** County, Iowa. Not previously recorded in the County Recorder's office.

This certificate is being prepared in compliance with Iowa Code Chapter 355.11 because:

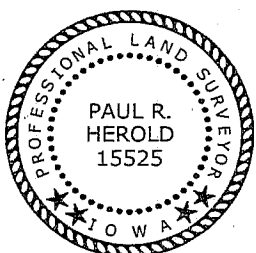
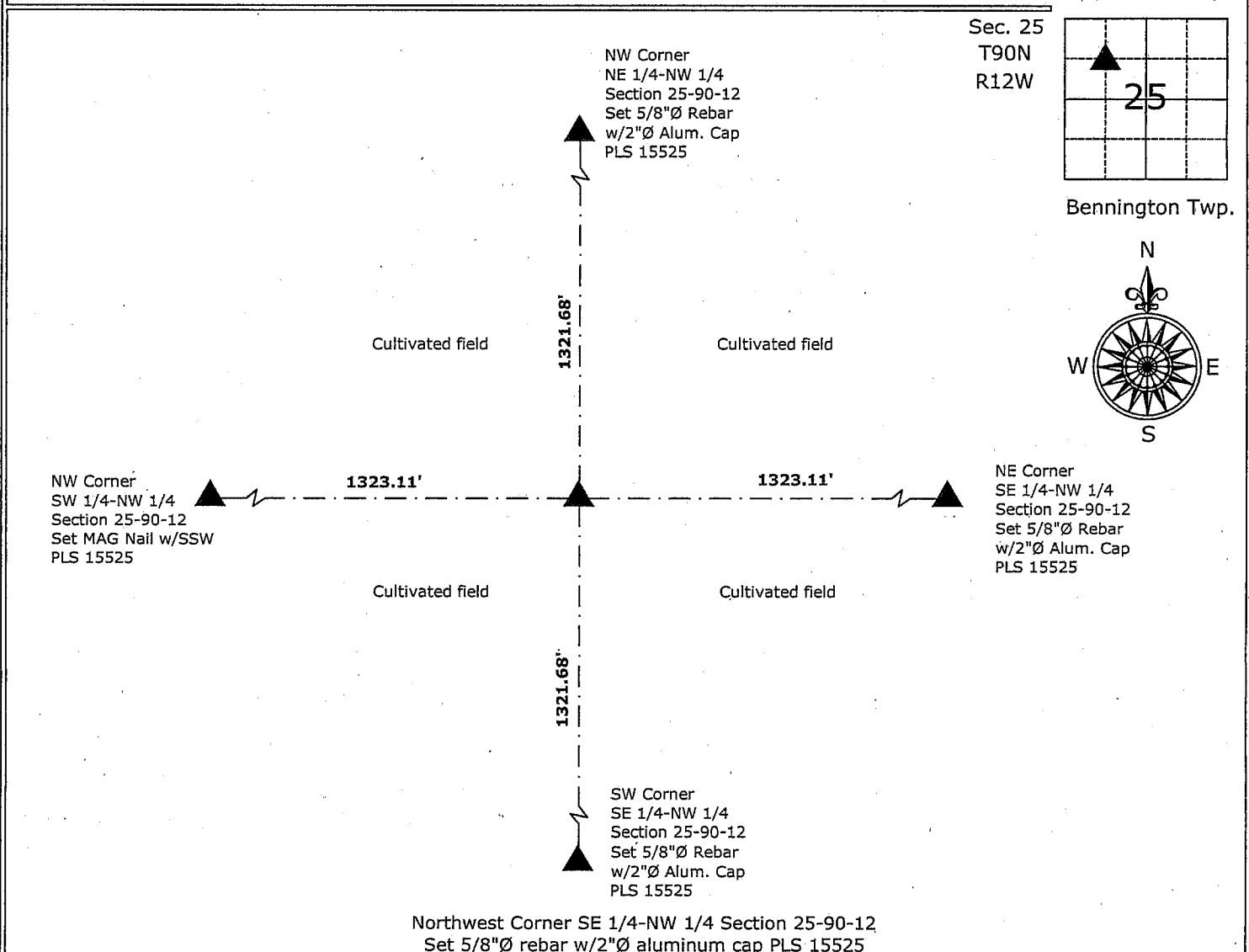
- ☒ There is no certificate on file for this corner.  
☐ There are no longer three valid ties of record.  
☐ There are changes to reference ties of record.  
☐ There is change of monumentation of record.  
☐ To clarify description of record monument (ties).

Monument Description and Remarks:

**Northwest Corner SE 1/4-NW 1/4:** Set 5/8"Ø rebar with 2"Ø aluminum cap 15525 at the intersection of 1/4-1/4 Section Lines.

### PLAN - VIEW

(Show a minimum of three reference ties to durable physical objects, relevant monuments and physical conditions that will enable recovery of the corner.)



I hereby certify that this land surveying document was prepared and the related survey work was performed by me or under my direct personal supervision and that I am a duly licensed Land Surveyor under the laws of the State of Iowa.

*Paul R. Herold* 1-12-09  
Paul R. Herold Date:

License number 15525

My license renewal date is December 31, 2008.

Sheets covered by this seal: Individual sheet only

#### List Corners to be Indexed

| Corners  | Section | Twp. | Range |
|----------|---------|------|-------|
| NW-SE-NW | 25      | 90   | 12    |

Project Number: 2008-141

FB: Black Hawk County 1, Pgs. 1-2