

Reserved for County Recorder's use.

Doc ID: 009926500001 Type: GEN
Recorded: 08/25/2020 at 01:25:41 PM
Fee Amt: \$7.00 Page 1 of 1
Black Hawk County Iowa
SANDIE L. SMITH RECORDER
File **2021-00004050**

enw
*

Kyle J. Helland, 6109 Chancellor Drive, Cedar Falls, Iowa 50613-6916, (319)-266-0161

UNITED STATES PUBLIC LAND SURVEY CORNER CERTIFICATE
OF

LAND SURVEY MONUMENTS SITUATED IN SECTION NO. 24, TOWNSHIP NO. 90 NORTH, RANGE
NO. 12 WEST OF THE FIFTH PRINCIPAL MERIDIAN, BLACK HAWK COUNTY, IOWA.
PREVIOUSLY RECORDED IN BOOK 329 MISC 947

(SHOW REASON FOR PREPARING THIS CERTIFICATE, THE EVIDENCE AND DETAILED PROCEDURES USED IN ESTABLISHING THE
CORNER POSITIONS AND MONUMENTATION FOUND OR PLACED.)

MONUMENT DESCRIPTION AND REMARKS:

ADDED ADDITIONAL TIES. SURVEY COMPLETED IN THE NW, NE, AND SE 1/4 OF SEC. 24-T90N-R12W.

→ **N 1/4 CORNER:** WPA NOTES (UNDATED) CALL FOR [FOUND SAND STONE 8" x 6" x 4" WOOD STAKE 2" x 1" x 18" OLD OAK
HUB 8" x 2" x 2" SET C.M. 12" DEEP]. BLACK HAWK COUNTY REFERENCE TIES (DATED 1958, RETIED 11/19/1981) CALLS
FOR [MONUMENT 0.2' DEEP LAID #60 COMMON ON MONUMENT]. USPLSCC BOOK 329 PAGE 947 DATED 05/01/1998 CALLS
FOR [FOUND CONCRETE MONUMENT WITH BRASS CAP AT S 1/4 CORNER. SET NEW TIES AT ALL CORNERS. SET 1/2"
IRON REBAR ON WEST SIDE OF CONCRETE MONUMENT AT S 1/4 CORNER.]. FOUND CONCRETE MONUMENT FLUSH.
ADDED ADDITIONAL TIES DUE TO POSSIBILITY OF DAMAGE TO CONCRETE MONUMENT AT THIS DEPTH.

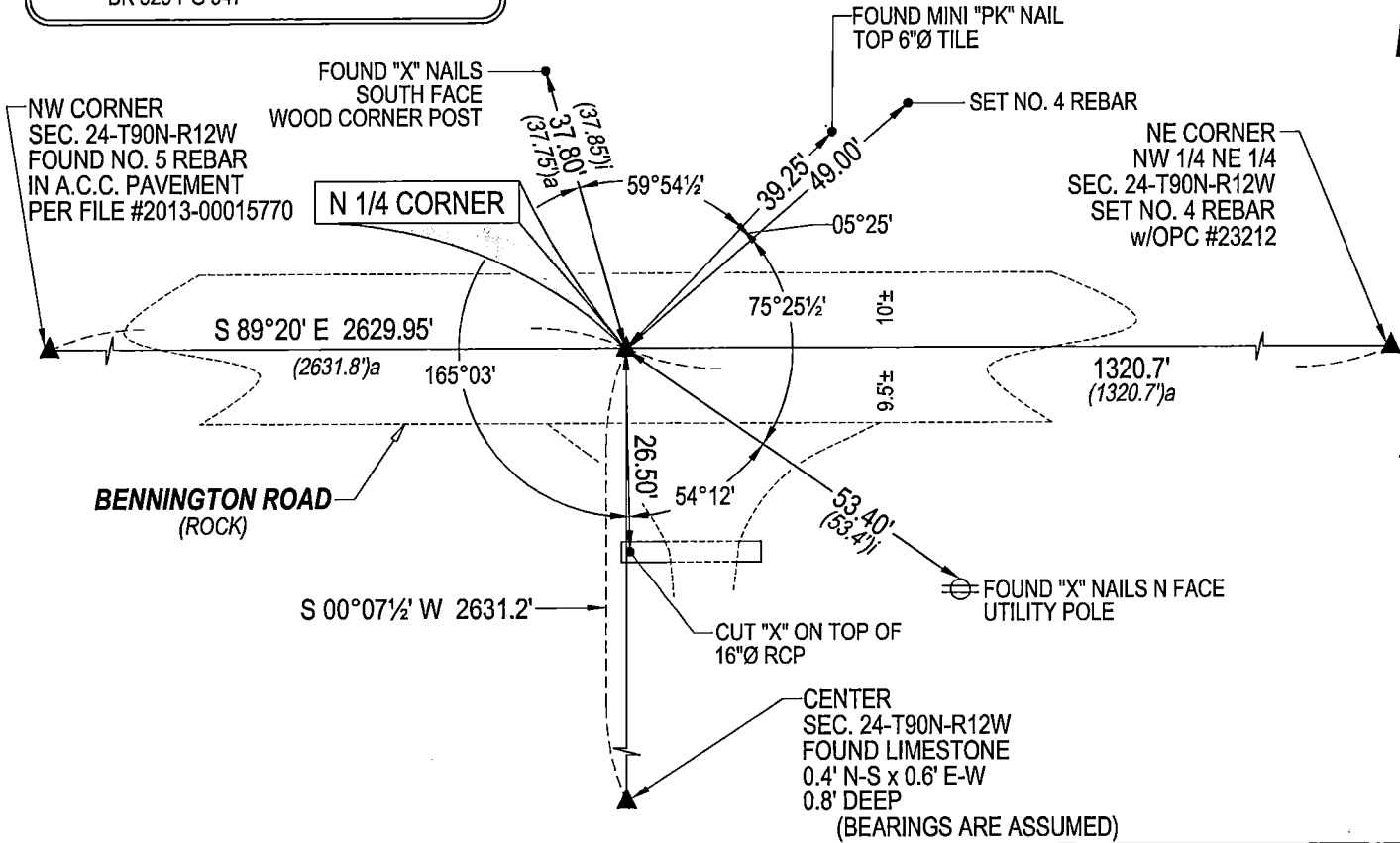
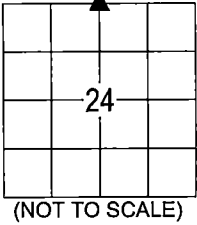
PLAN VIEW

(SHOW A MINIMUM OF THREE REFERENCE TIES TO DURABLE PHYSICAL OBJECTS, RELEVANT MONUMENTS AND PHYSICAL
CONDITIONS THAT WILL ENABLE RECOVERY OF THE CORNER.)

LEGEND

(0.0')a WPA NOTES PG 24

(0.0')i PER USPLSCC DATED 05/01/1998
BK 329 PG 947



HELLAND ENGINEERING & SURVEYING, LTD.
6109 Chancellor Drive
Cedar Falls, Iowa 50613-6916
(319)-266-0161

BRASS TAG = 4d. NAIL & 13/16"Ø BRASS TAG DRAWN BY: KDA
SHINER = 1"Ø STEEL SHINER w/MASONRY NAIL
OPC = PLASTIC CAP (O=ORANGE, R=RED, Y=YELLOW)
(00') RECORDED AS FILE NAME: 20-167-28.DWG



I hereby certify that this land surveying document was prepared
and the related survey work was performed by me or under my
direct personal supervision and that I am a duly licensed
Professional Land Surveyor under the laws of the State of Iowa.
Kyle J. Helland 12/8/2020
Kyle J. Helland
License Number 23212
My license renewal date is December 31, 2021.
All pages or sheets are covered by this seal except:

LIST CORNERS TO BE INDEXED			
CORNER	SECTION	TOWNSHIP	RANGE
N 1/4 CORNER	24	90N	12W
S 1/4 CORNER	13	90N	12W