

Doc ID: 009926510001 Type: GEN
Recorded: 08/25/2020 at 01:25:53 PM
Fee Amt: \$7.00 Page 1 of 1
Black Hawk County Iowa
SANDIE L. SMITH RECORDER
File **2021-00004051**

Reserved for County Recorder's use.

Kyle J. Helland, 6109 Chancellor Drive, Cedar Falls, Iowa 50613-6916, (319)-266-0161

UNITED STATES PUBLIC LAND SURVEY CORNER CERTIFICATE
OF

LAND SURVEY MONUMENTS SITUATED IN SECTION NO. 24, TOWNSHIP NO. 90 NORTH, RANGE
NO. 12 WEST OF THE FIFTH PRINCIPAL MERIDIAN, BLACK HAWK COUNTY, IOWA.
PREVIOUSLY RECORDED IN N/A

(SHOW REASON FOR PREPARING THIS CERTIFICATE, THE EVIDENCE AND DETAILED PROCEDURES USED IN ESTABLISHING THE
CORNER POSITIONS AND MONUMENTATION FOUND OR PLACED.)

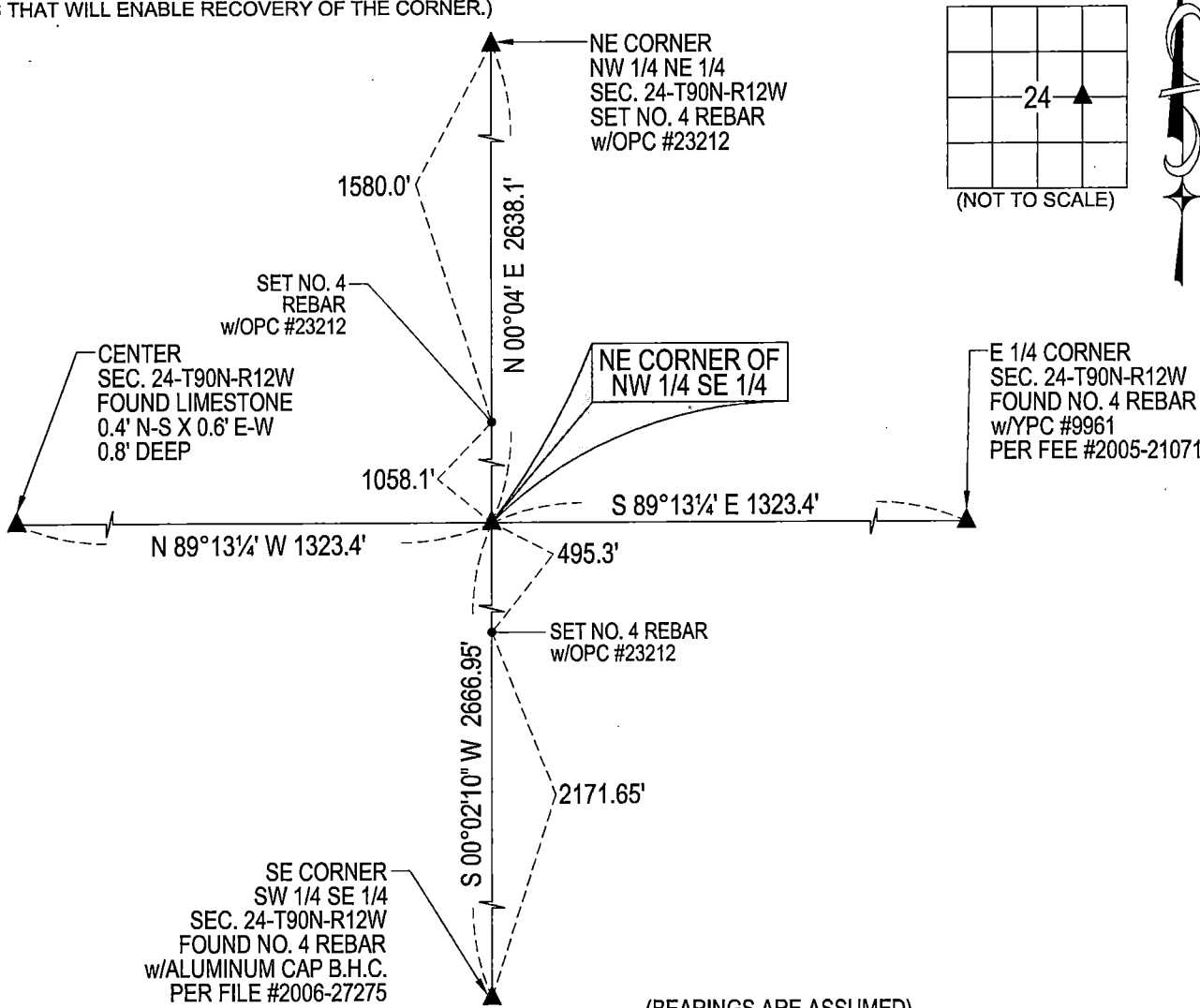
MONUMENT DESCRIPTION AND REMARKS:

NO USPLSCC ON FILE. SURVEY COMPLETED IN THE NW, NE, AND SE 1/4 OF SEC. 24-T90N-R12W.

NE CORNER NW 1/4 SE 1/4: NO BLACK HAWK COUNTY ENGINEER TIES ARE AVAILABLE NOR ANY OTHER PUBLIC
DOCUMENTATION OF THE HISTORY AND PERPETUATION OF CORNER WAS AVAILABLE. SEARCHED AREA WITH
MAGNETIC DETECTOR AND PROBED, FOUND NOTHING. THEREFORE SET NO. 4 REBAR w/OPC #23212 AT MIDPOINT
BETWEEN CENTER OF SECTION AND EAST 1/4 CORNER. NO GERMANE PHYSICAL OBJECTS TO REFERENCE TO IN
VICINITY FOR TIES, THEREFORE TIED TO OTHER CORNERS.

PLAN VIEW

(SHOW A MINIMUM OF THREE REFERENCE TIES TO DURABLE PHYSICAL OBJECTS, RELEVANT MONUMENTS AND PHYSICAL
CONDITIONS THAT WILL ENABLE RECOVERY OF THE CORNER.)

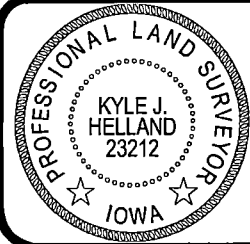


(BEARINGS ARE ASSUMED)



HELLAND ENGINEERING & SURVEYING, LTD.
6109 Chancellor Drive
Cedar Falls, Iowa 50613-6916
(319)-266-0161

BRASS TAG = 4d. NAIL & 13/16"Ø BRASS TAG DRAWN BY: KDA
SHINER = 1"Ø STEEL SHINER w/MASONRY NAIL
OPC = PLASTIC CAP (O=ORANGE, R=RED, Y=YELLOW)
(00') RECORDED AS FILE NAME: 20-167-33.DWG



I hereby certify that this land surveying document was prepared
and the related survey work was performed by me or under my
direct personal supervision and that I am a duly licensed
Professional Land Surveyor under the laws of the State of Iowa.
Kyle J. Helland 08/27/2020
Kyle J. Helland
License Number 23212
My license renewal date is December 31, 2021.
All pages or sheets are covered by this seal except:

LIST CORNERS TO BE INDEXED			
CORNER	SECTION	TOWNSHIP	RANGE
NE COR. NW ¼ SE ¼	24	90N	12W
SE COR. SW ¼ NE ¼	24	90N	12W
SW COR. SE ¼ NE ¼	24	90N	12W
NW COR. NE ¼ SE ¼	24	90N	12W

File Number **2021-00004051** Seq. 1