

Prepared by & Return to: Herold - Reicks Surveying, 2206 East Bremer Avenue, Waverly, IA 50677, Ph. 319-483-5187

United States Public Land Survey Corner Certificate

Land Survey Monument situated in  
Section 23, Township 90 North, Range 12 West of the Fifth Principal Meridian, **Black Hawk** County, Iowa.  
Not on file in the County Recorder's office.

This certificate is being prepared in compliance with Iowa Code Chapter 355.11 because:

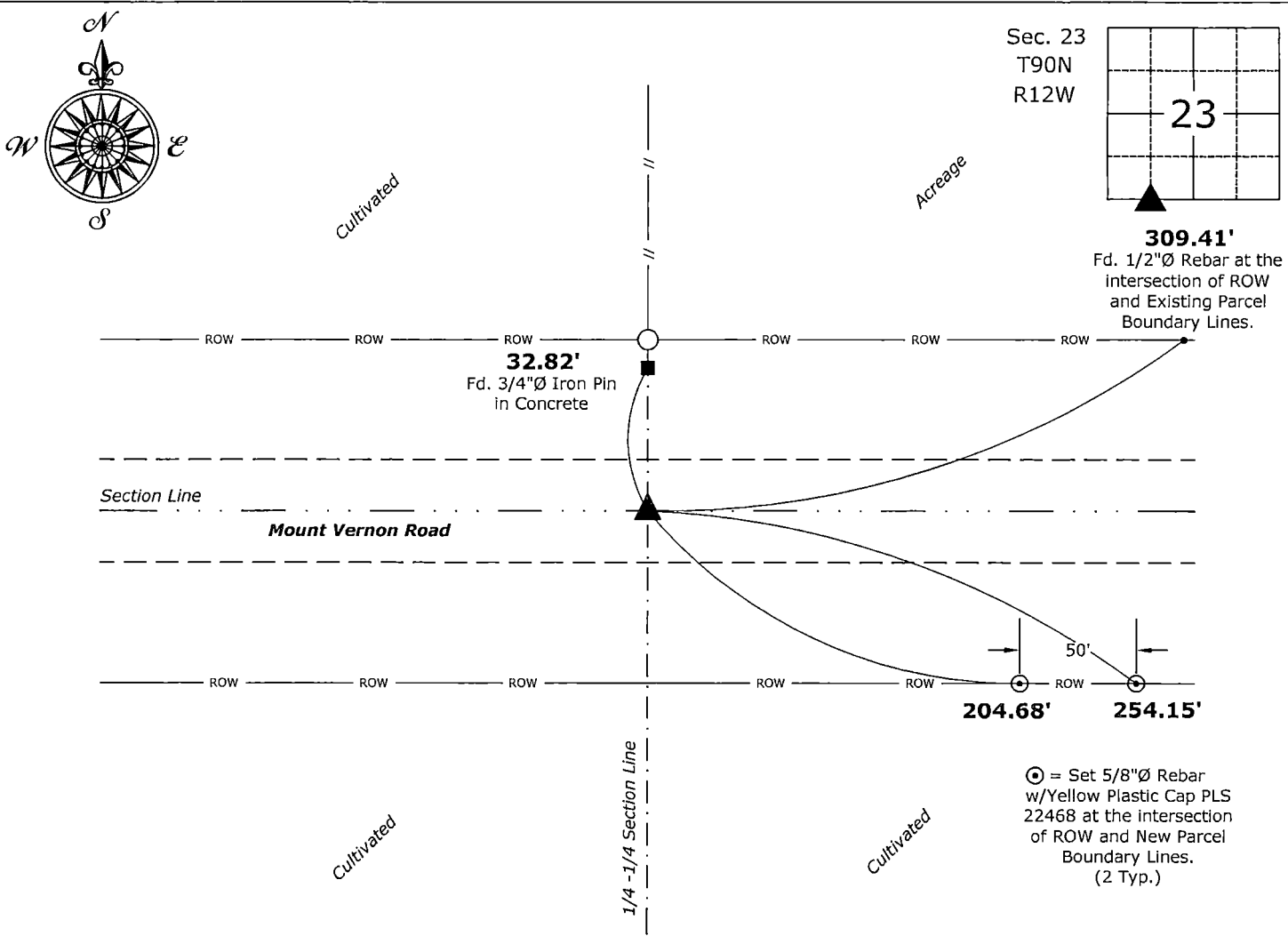
- 
- ☒ There is no certificate on file for this corner.  
☐ There are no longer three valid ties of record.  
☐ There are changes to reference ties of record.  
☐ There is change of monumentation of record.  
☐ To clarify description of record monument (ties).

Monument Description and Remarks:

**Southwest Corner SE 1/4 - SW 1/4:** Found 5/8"Ø Rebar, bent, with information obtained from a Survey and Plat of Parcel B, as recorded in Document #2011-10349, on file in the Black Hawk County Recorder's Office, Waterloo, Iowa. Removed and Reset 5/8"Ø Rebar w/2"Ø Aluminum Cap PLS 22468, corner falls equidistant and on line between the Southwest and South Quarter Corners of said Section.

Plan View

(Show a minimum of three reference ties to durable physical objects, relevant monuments and physical conditions that will enable recovery of the corner.)



**Southwest Corner SE 1/4 - SW 1/4 of Section 23-90-12**  
Found 5/8"Ø Rebar, bent. Removed and Reset 5/8"Ø Rebar w/2"Ø Aluminum Cap PLS 22468



I hereby certify that this land surveying document was prepared and the related survey work was performed by me or under my direct personal supervision and that I am a duly licensed Land Surveyor under the laws of the State of Iowa.  
*Isaiah M. Reicks* 11-12-20  
Isaiah M. Reicks Date:  
License number 22468  
My license renewal date is December 31, 2021.  
Sheets covered by this seal: Individual sheet only

List Corner to be Indexed			
Corner	Section	Twp.	Range
SW-SE-SW	23	90	12
Project Number: 2020-562			
File Number: 2021-00010707 Seq: 1			