



Doc ID: 010003010001 Type: GEN
Recorded: 11/17/2020 at 03:30:30 PM
Fee Amt: \$7.00 Page 1 of 1
Black Hawk County Iowa
SANDIE L. SMITH RECORDER

File **2021-00010703**

enw
*

Prepared by & Return to: Herold - Reicks Surveying, 2206 East Bremer Avenue, Waverly, IA 50677, Ph. 319-483-5187

United States Public Land Survey Corner Certificate

Land Survey Monument situated in
Section **23**, Township **90** North, Range **12** West of the Fifth Principal Meridian, **Black Hawk** County, Iowa.
On file in **Document #2013-00015767** in the County Recorder's office.

This certificate is being prepared in compliance with Iowa Code Chapter 355.11 because:



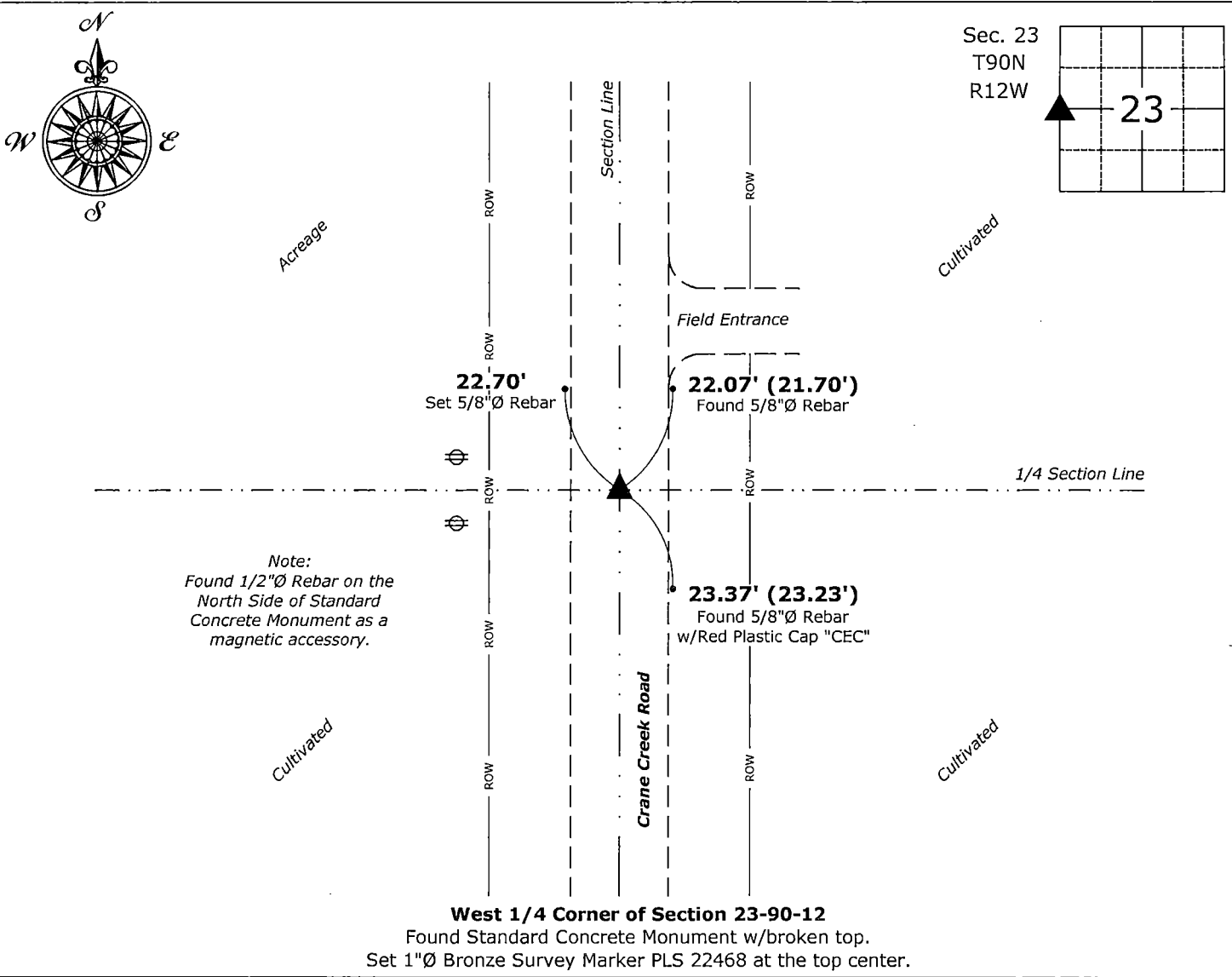
- ☐ There is no certificate on file for this corner.
- ☒ There are no longer three valid ties of record.
- ☐ There are changes to reference ties of record.
- ☒ There is change of monumentation of record.
- ☐ To clarify description of record monument (ties).

Monument Description and Remarks:

West 1/4 Corner: Found Standard Concrete Monument w/broken top with information obtained from the previously recorded Section Corner Certificate. Set 1"Ø Bronze Survey Marker PLS 22468 at the top center of said Found Monument.

Plan View

(Show a minimum of three reference ties to durable physical objects, relevant monuments and physical conditions that will enable recovery of the corner.)



I hereby certify that this land surveying document was prepared and the related survey work was performed by me or under my direct personal supervision and that I am a duly licensed Land Surveyor under the laws of the State of Iowa.
Isaiah M. Reicks 11-12-20
Isaiah M. Reicks Date:
License number 22468
My license renewal date is December 31, 2021.
Sheets covered by this seal: Individual sheet only

List Corner to be Indexed			
Corner	Section	Twp.	Range
W 1/4	23	90	12
Project Number: 2020-562			
File Number: 2021-00010703 Seq. 1			