

ew
x

Prepared by & Return to: Herold - Reicks Surveying, 2206 East Bremer Avenue, Waverly, IA 50677, Ph. 319-483-5187

United States Public Land Survey Corner Certificate

Land Survey Monument situated in
Section **23**, Township **90** North, Range **12** West of the Fifth Principal Meridian, **Black Hawk** County, Iowa.
On file in **Document #2007-004059** in the County Recorder's office.

This certificate is being prepared in compliance with Iowa Code Chapter 355.11 because:

- {
- ☐

There is no certificate on file for this corner.
- ☒

There are no longer three valid ties of record.
- ☐

There are changes to reference ties of record.
- ☒

There is change of monumentation of record.
- ☐

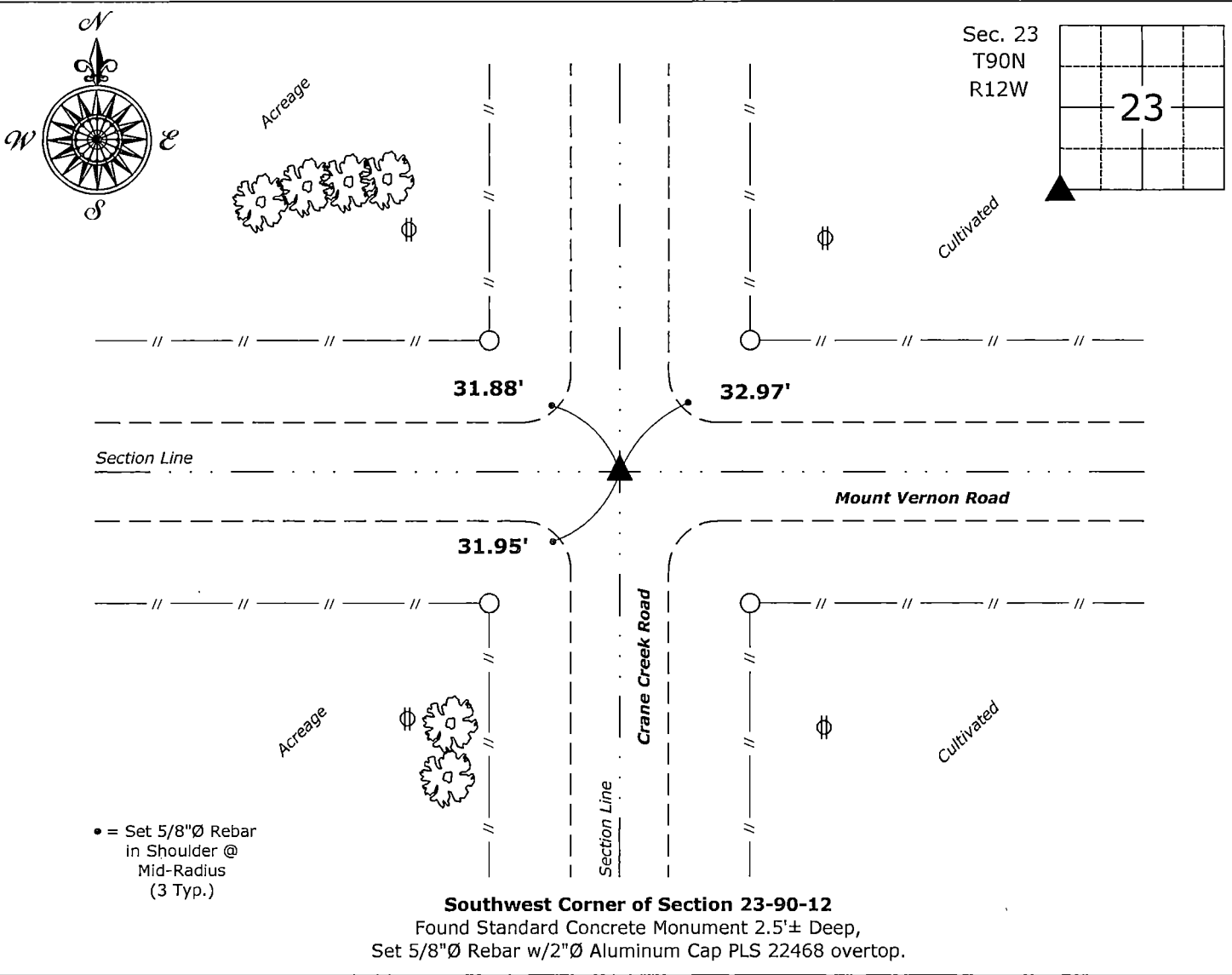
To clarify description of record monument (ties).

Monument Description and Remarks:

Southwest Corner: Found 5/8"Ø Rebar and 3/4"Ø Hex Rod with information obtained from the previously recorded Section Corner Certificate. Probed area and Found Standard Concrete Monument 2.5'± Deep, therefore Set 5/8"Ø Rebar w/2"Ø Aluminum Cap PLS 22468 otopert to perpetuate the corner.

Plan View

(Show a minimum of three reference ties to durable physical objects, relevant monuments and physical conditions that will enable recovery of the corner.)



I hereby certify that this land surveying document was prepared and the related survey work was performed by me or under my direct personal supervision and that I am a duly licensed Land Surveyor under the laws of the State of Iowa.

Isaiah M. Reicks 11-12-20
Isaiah M. Reicks Date:
License number 22468
My license renewal date is December 31, 2021.
Sheets covered by this seal: Individual sheet only

List Corner to be Indexed			
Corner	Section	Twp.	Range
SW	23	90	12

Project Number: 2020-562
File Number: 2021-00010704 Seq: 1