

enr  
\*

Prepared by & Return to: Herold - Reicks Surveying, 2206 East Bremer Avenue, Waverly, IA 50677, Ph. 319-483-5187

United States Public Land Survey Corner Certificate

Land Survey Monument situated in  
Section **23**, Township **90** North, Range **12** West of the Fifth Principal Meridian, **Black Hawk** County, Iowa.  
Not on file in the County Recorder's office.

This certificate is being prepared in compliance  
with Iowa Code Chapter 355.11 because:

- {
- ☒ There is no certificate on file for this corner.  
☐ There are no longer three valid ties of record.  
☐ There are changes to reference ties of record.  
☐ There is change of monumentation of record.  
☐ To clarify description of record monument (ties).

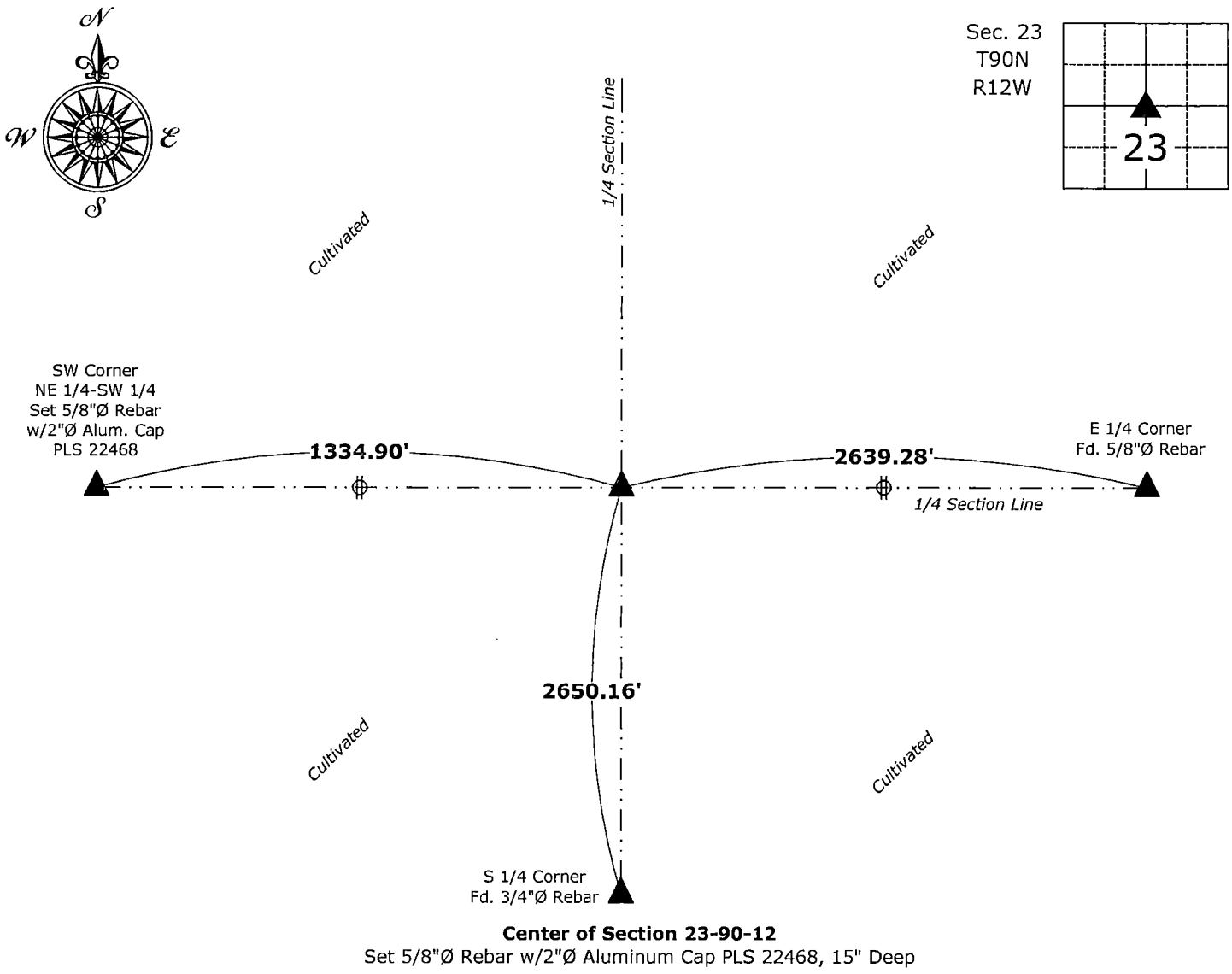
Monument Description and Remarks:

**Center of Section:** Set 5/8"Ø Rebar w/2"Ø Aluminum Cap PLS 22468, 15" Deep, at the intersection of 1/4 Section Lines.

An extensive search of all of the records within the County offices was performed as part of the section corner recovery.  
There were no records located of the perpetuation of a monument at this corner.

Plan View

(Show a minimum of three reference ties to durable physical objects, relevant monuments and physical conditions that will enable recovery of the corner.)



I hereby certify that this land surveying document  
was prepared and the related survey work was  
performed by me or under my direct personal  
supervision and that I am a duly licensed Land  
Surveyor under the laws of the State of Iowa.  
*Isaiah M. Reicks* 11-12-20  
Isaiah M. Reicks Date:  
License number 22468  
My license renewal date is December 31, 2021.  
Sheets covered by this seal: Individual sheet only

List Corner to be Indexed			
Corner	Section	Twp.	Range
CTR	23	90	12

Project Number: 2020-562
File Number: 2021-00010705 Seq: 1