

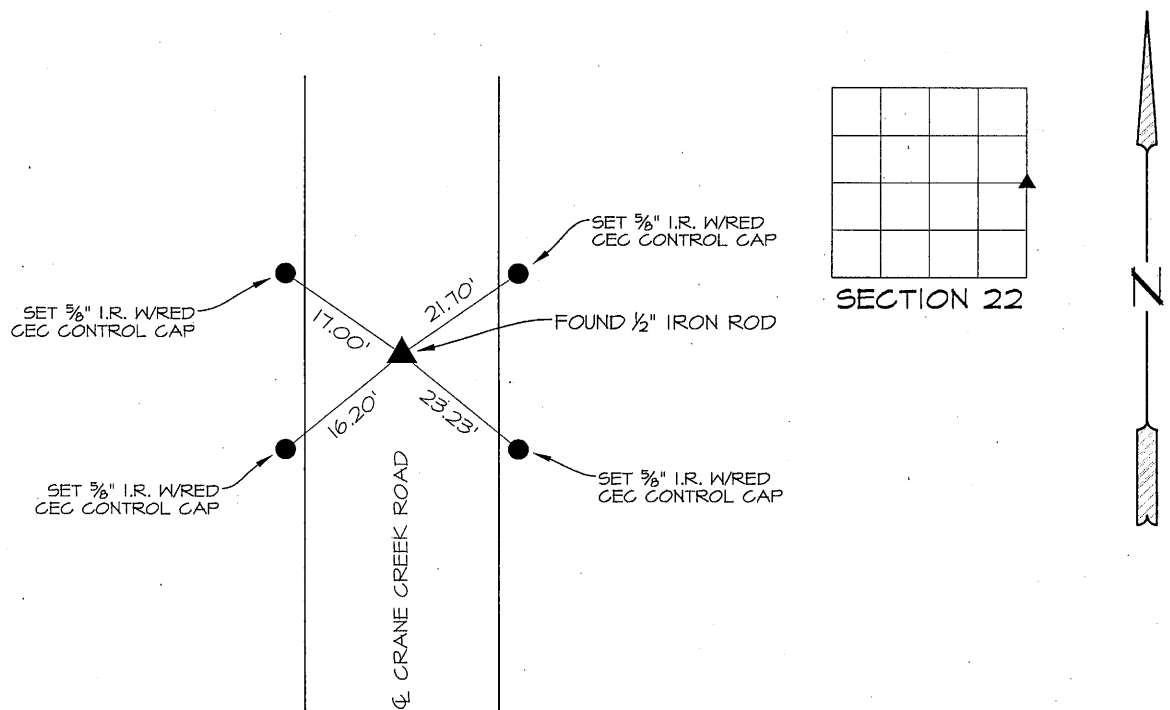
PREPARED BY PATRICK SHEPARD: CIVIL ENGINEERING CONSULTANTS, INC. - 2400 86th ST. #12 -DES MOINES, IOWA 50322

UNITED STATES PUBLIC LAND SURVEY CORNER CERTIFICATE OF

LAND SURVEY MONUMENTS SITUATED IN SECTION 22, TOWNSHIP 90 NORTH, RANGE 12 WEST, OF THE FIFTH PRINCIPAL MERIDIAN, BLACK HAWK COUNTY, IOWA. PREVIOUS RECORD FOUND AT THE BLACK HAWK COUNTY RECORDER'S OFFICE IN BOOK 326 MISC. PAGE 029.

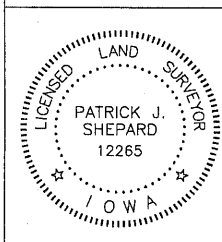
MONUMENT DESCRIPTION AND REMARKS: E $\frac{1}{4}$ CORNER 19-90-12. PREVIOUS RECORD INDICATES CONCRETE MONUMENT. FOUND $\frac{1}{2}$ " IRON ROD IN CENTERLINE OF ROAD. THIS CERTIFICATE IS BEING PREPARED TO DOCUMENT MONUMENTATION FOUND AND ACCEPTED AS THE E $\frac{1}{4}$ CORNER AND TO PROVIDE TIES.

PLAN -VIEW



LIST CORNERS TO BE INDEXED

CORNERS	SECTION	TWP.	RANGE
E $\frac{1}{4}$ CORNER	22	90	12
W $\frac{1}{4}$ CORNER	23	90	12



I HEREBY CERTIFY THAT THIS LAND SURVEYING DOCUMENT WAS PREPARED AND THE RELATED SURVEY WORK WAS PERFORMED BY ME OR UNDER MY DIRECT PERSONAL SUPERVISION AND THAT I AM A DULY LICENSED LAND SURVEYOR UNDER THE LAWS OF THE STATE OF IOWA.

PATRICK J. SHEPARD, IOWA LICENSE NO. 12265 DATE 1-25-13
MY LICENSE RENEWAL DATE IS DECEMBER 31, 2013

PAGES OR SHEETS COVERED BY THIS SEAL:

THIS SHEET ONLY