

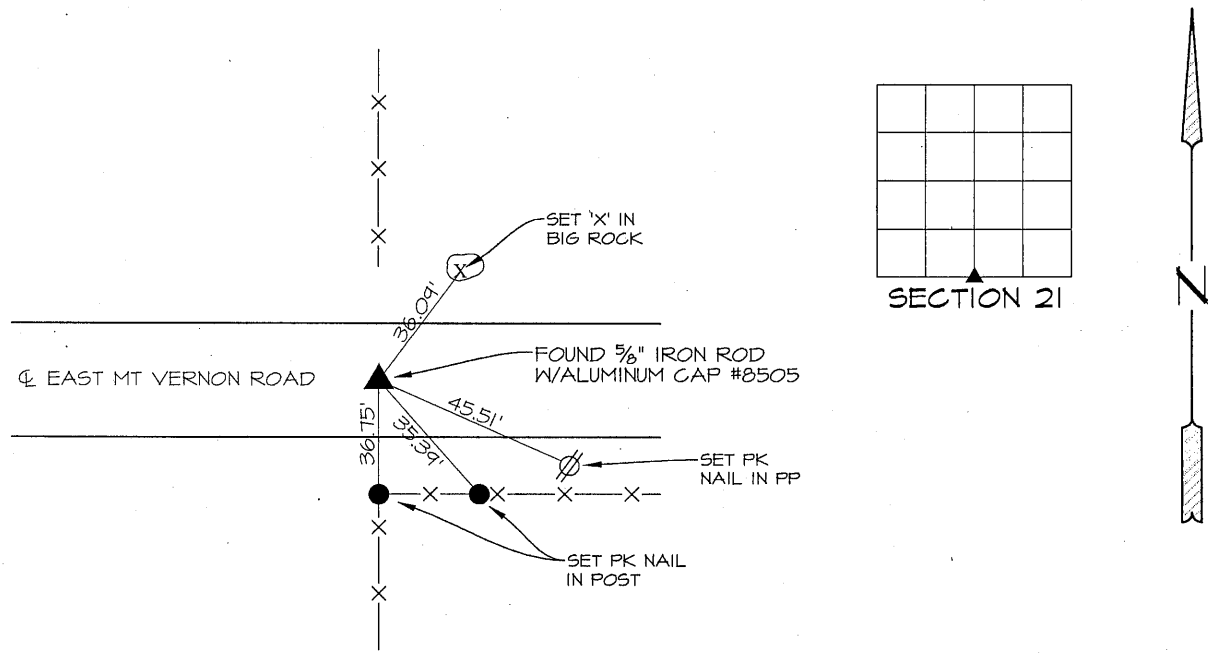
PREPARED BY PATRICK SHEPARD: CIVIL ENGINEERING CONSULTANTS, INC. - 2400 86th ST. #12 -DES MOINES, IOWA 50322

UNITED STATES PUBLIC LAND SURVEY CORNER CERTIFICATE  
OF

LAND SURVEY MONUMENTS SITUATED IN SECTION 21, TOWNSHIP 90 NORTH, RANGE 12 WEST, OF THE FIFTH PRINCIPAL MERIDIAN, BLACK HAWK COUNTY, IOWA. PREVIOUS RECORD FOUND IN THE SURVEY BOOKS AT THE BLACK HAWK COUNTY ENGINEER'S OFFICE.

MONUMENT DESCRIPTION AND REMARKS: S 1/4 CORNER 21-90-12. PREVIOUS RECORD INDICATES CONCRETE MONUMENT WITH CAP. FOUND 5/8" IRON ROD WITH ALUMINUM CAP #8505 IN CENTERLINE OF ROAD AND IN LINE WITH FENCES TO THE NORTH AND SOUTH. THIS CERTIFICATE IS BEING PREPARED TO DOCUMENT MONUMENTATION FOUND AND ACCEPTED AS S 1/4 CORNER AND TO PROVIDE TIES.

PLAN -VIEW



LIST CORNERS TO BE INDEXED

CORNERS	SECTION	TWP.	RANGE
S 1/4 CORNER	21	90	12
N 1/4 CORNER	28	90	12

LICENSED LAND SURVEYOR  
PATRICK J. SHEPARD  
12265  
IOWA

I HEREBY CERTIFY THAT THIS LAND SURVEYING DOCUMENT WAS PREPARED AND THE RELATED SURVEY WORK WAS PERFORMED BY ME OR UNDER MY DIRECT PERSONAL SUPERVISION AND THAT I AM A DULY LICENSED LAND SURVEYOR UNDER THE LAWS OF THE STATE OF IOWA.

*PShepard* 1-24-13  
PATRICK J. SHEPARD, IOWA LICENSE NO. 12265 DATE  
MY LICENSE RENEWAL DATE IS DECEMBER 31, 2013  
PAGES OR SHEETS COVERED BY THIS SEAL:  
THIS SHEET ONLY