



Doc ID: 005330120001 Type: GEN
 Kind: CORNER
 Recorded: 11/07/2013 at 11:14:44 AM
 Fee Amt: \$7.00 Page 1 of 1
 Black Hawk County Iowa
 JUDITH A MCCARTHY RECORDER
 File **2014-00009858**

Jeffrey P. Helland, 1107 Technology Parkway, Cedar Falls, Iowa 50613-6951, (319)-266-0161

UNITED STATES PUBLIC LAND SURVEY CORNER CERTIFICATE OF

LAND SURVEY MONUMENTS SITUATED IN SECTION NO. 20, TOWNSHIP NO. 90 NORTH, RANGE NO. 12 WEST OF THE FIFTH PRINCIPAL MERIDIAN, BLACK HAWK COUNTY, IOWA.
 PREVIOUSLY RECORDED IN N/A

(SHOW REASON FOR PREPARING THIS CERTIFICATE, THE EVIDENCE AND DETAILED PROCEDURES USED IN ESTABLISHING THE CORNER POSITIONS AND MONUMENTATION FOUND OR PLACED.)

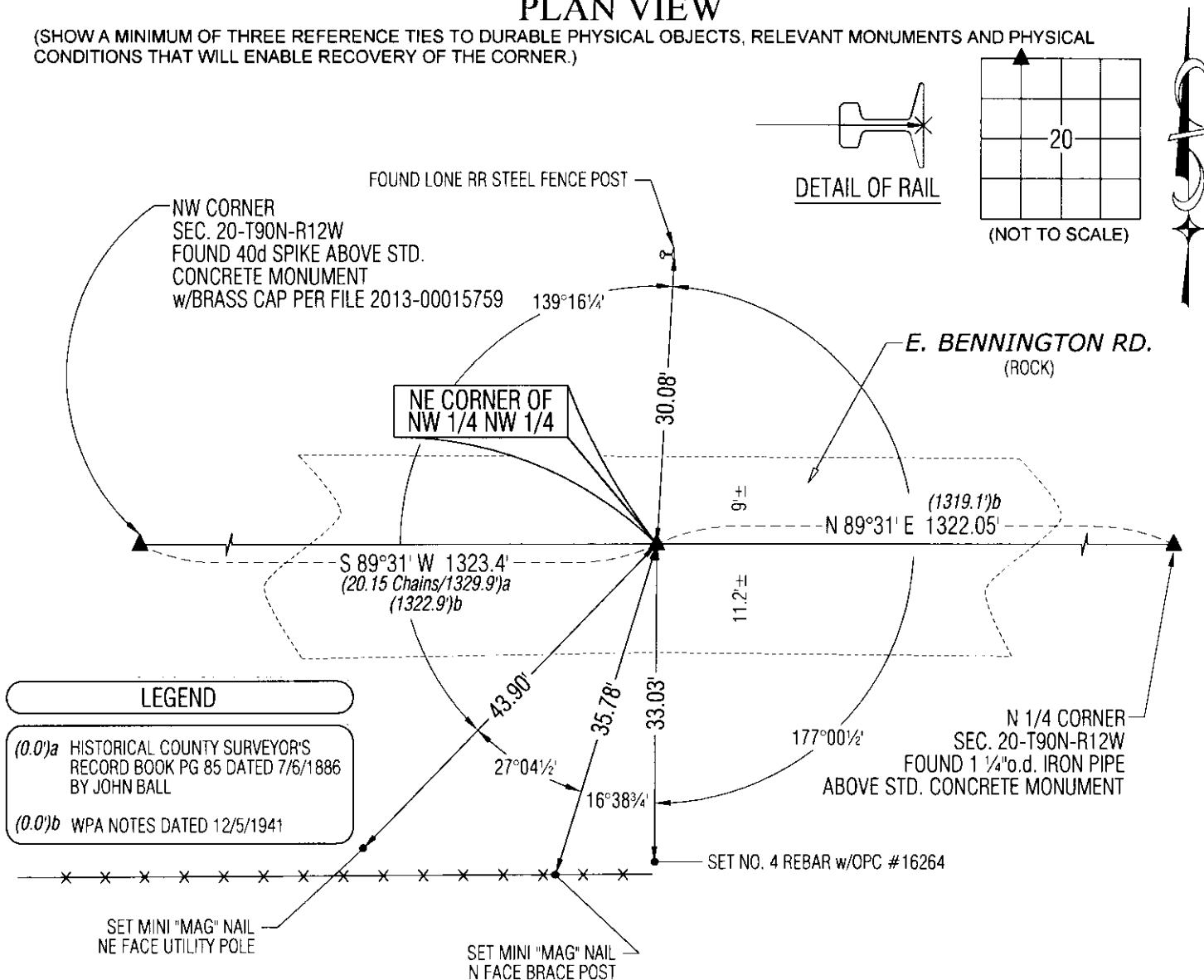
MONUMENT DESCRIPTION AND REMARKS:

NO USPLSCC ON FILE. SURVEY COMPLETED IN THE NW 1/4 OF SEC. 20-T90N-R12W.

→ **NE CORNER OF NW 1/4 NW 1/4:** HISTORICAL COUNTY SURVEYOR'S RECORD BOOK PAGE 85, A SURVEY BY JOHN BALL DATED 7/6/1886 CALLS FOR [MOUND]. NO BLACK HAWK COUNTY ENGINEER'S TIES AVAILABLE. SEARCHED AREA WITH MAGNETIC DETECTOR NOTHING FOUND. SET NO. 4 REBAR w/OPC #16264 ON LINE BETWEEN THE NORTHWEST CORNER AND THE NORTH 1/4 CORNER OF SECTION 20-T90N-R12W AND IN LINE WITH FENCE RUNNING SOUTH.

PLAN VIEW

(SHOW A MINIMUM OF THREE REFERENCE TIES TO DURABLE PHYSICAL OBJECTS, RELEVANT MONUMENTS AND PHYSICAL CONDITIONS THAT WILL ENABLE RECOVERY OF THE CORNER.)

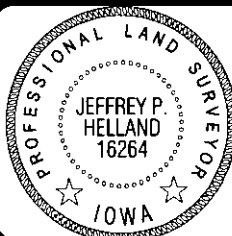


(BEARINGS ARE ASSUMED)



HELLAND ENGINEERING & SURVEYING, LTD.
 1107 Technology Parkway
 Cedar Falls, Iowa 50613-6951
 (319)-266-0161

SHINER = 8d NAIL & 1 5/16" Ø METAL SHINER
 BRASS TAG = 8d NAIL & 13/16" Ø BRASS TAG
 OPC = PLASTIC CAP (O=ORANGE, R=RED, Y=YELLOW)
 (00') RECORDED AS FILE NAME: 13-212-61.DWG



I hereby certify that this land surveying document was prepared and the related survey work was performed by me or under my direct personal supervision and that I am a duly licensed Professional Land Surveyor under the laws of the State of Iowa.
Jeffrey P. Helland 10/30/13
 Jeffrey P. Helland
 License Number 16264
 My license renewal date is December 31, 2013.
 All pages or sheets are covered by this seal except:

| LIST CORNERS TO BE INDEXED | | | |
|----------------------------|---------|----------|-------|
| CORNER | SECTION | TOWNSHIP | RANGE |
| NE COR. NW 1/4 NW 1/4 | 20 | 90N | 12W |
| SE COR. SW 1/4 SW 1/4 | 17 | 90N | 12W |
| SW COR. SE 1/4 SW 1/4 | 17 | 90N | 12W |
| NW COR. NE 1/4 NW 1/4 | 20 | 90N | 12W |

File Number: 2014-00009858 Seq: 1

(7.00)

e.