

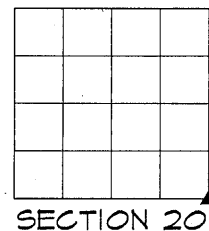
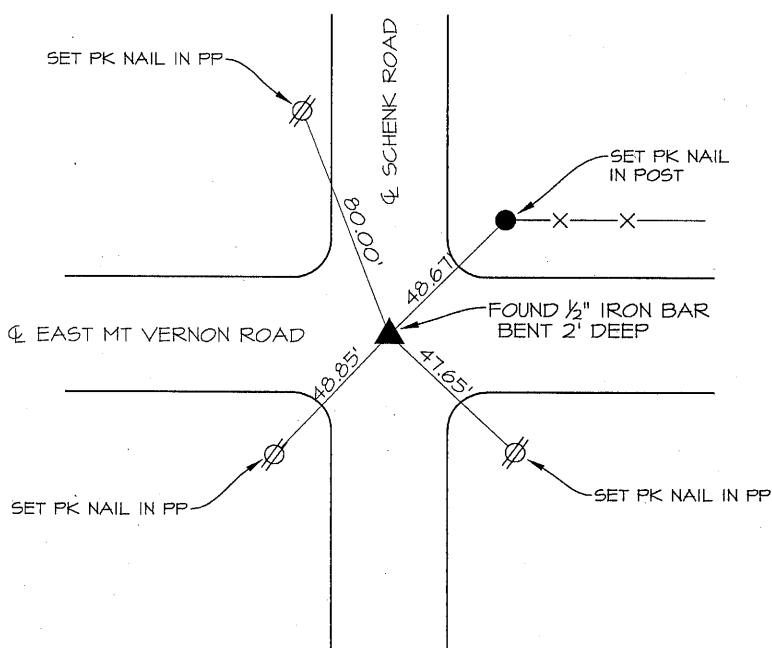
PREPARED BY PATRICK SHEPARD: CIVIL ENGINEERING CONSULTANTS, INC. - 2400 86th ST. #12 -DES MOINES, IOWA 50322

# UNITED STATES PUBLIC LAND SURVEY CORNER CERTIFICATE OF

LAND SURVEY MONUMENTS SITUATED IN SECTION 20, TOWNSHIP 90 NORTH, RANGE 12 WEST, OF THE FIFTH PRINCIPAL MERIDIAN, BLACK HAWK COUNTY, IOWA. PREVIOUS RECORD FOUND IN THE SURVEY BOOKS AT THE BLACK HAWK COUNTY ENGINEER'S OFFICE.

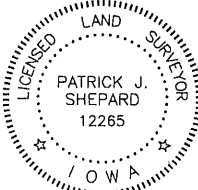
MONUMENT DESCRIPTION AND REMARKS: SE CORNER 20-90-12. PREVIOUS RECORD INDICATED CONCRETE MONUMENT WITH CAP. FOUND 1/2" IRON BAR BENT 2' DEEP AT THE INTERSECTION OF THE ROAD CENTERLINES. THIS CERTIFICATE IS BEING PREPARED TO DOCUMENT MONUMENTATION FOUND AND ACCEPTED AS THE SE CORNER AND TO PROVIDE TIES.

## PLAN -VIEW



## LIST CORNERS TO BE INDEXED

CORNERS	SECTION	TWP.	RANGE
SE CORNER	20	90	12
NE CORNER	29	90	12
SW CORNER	21	90	12
NW CORNER	28	90	12

	<p>I HEREBY CERTIFY THAT THIS LAND SURVEYING DOCUMENT WAS PREPARED AND THE RELATED SURVEY WORK WAS PERFORMED BY ME OR UNDER MY DIRECT PERSONAL SUPERVISION AND THAT I AM A DULY LICENSED LAND SURVEYOR UNDER THE LAWS OF THE STATE OF IOWA.</p> <p><i>P. Shepard</i> 1-24-13 PATRICK J. SHEPARD, IOWA LICENSE NO. 12265 DATE MY LICENSE RENEWAL DATE IS DECEMBER 31, 2013 PAGES OR SHEETS COVERED BY THIS SEAL: THIS SHEET ONLY</p>
---	---