

## UNITED STATES PUBLIC LAND SURVEY CORNER CERTIFICATE

nd Survey Monuments situated in Section OF 20, Township 90 N, Range 12 W  
 he Fifth Principal Meridian, BLACK HAWK County, Iowa. Previously recorded  
 in County Recorder's Office.

(book, page, document number, etc.)

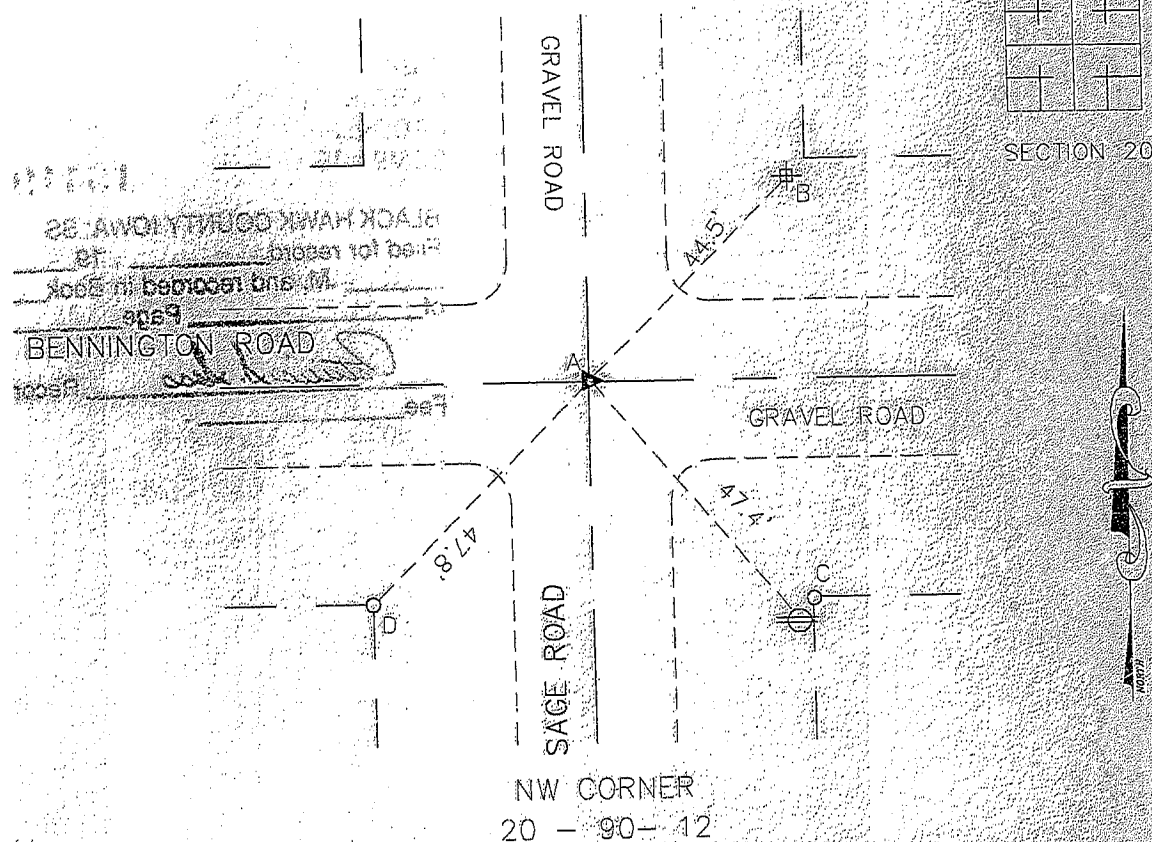
ow reason for preparing this certificate, the evidence and detailed procedures used in establishing the corner positions and  
 nummentation found or placed.)

## Monument Description and Remarks:

- A - FOUND CONC. MONUMENT BROKEN ON TOP - PLACE SPK OVER CENTER  
 B - STREET SIGN POST  
 C - SET NAIL IN POWER POLE  
 D - SET NAIL IN FENCE CORNER POST

## PLAN VIEW

ow a minimum of three reference ties to durable physical objects, relevant monuments and physical conditions that will  
 able recovery of the corner.)



NW CORNER  
 20 - 90 - 12

by certify that this land surveying document was prepared by  
 or under my direct personal supervision and that I am a duly  
 stered Land Surveyor under the laws of the State of Iowa.

Signature: Terry D. Van Laningham  
 Terry D. Van Laningham, PLS

Date: Feb 29, 1996 Reg. No. 10793

My registration renewal date is December 31, 1997.

## List Corners to be Indexed

Corners	Section	Township	Range
NW COR	20	90 N	12 W

SEAL



BOOK 319 PAGE 713