

PREPARED BY: BLACK HAWK COUNTY ENGINEERS OFFICE

316 E. FIFTH STREET, ROOM 211 WATERLOO, IOWA 50703

PH.# (319) 833-3008

FAX.# (319) 833-3139

SLSI 9-94

CERT 12-96

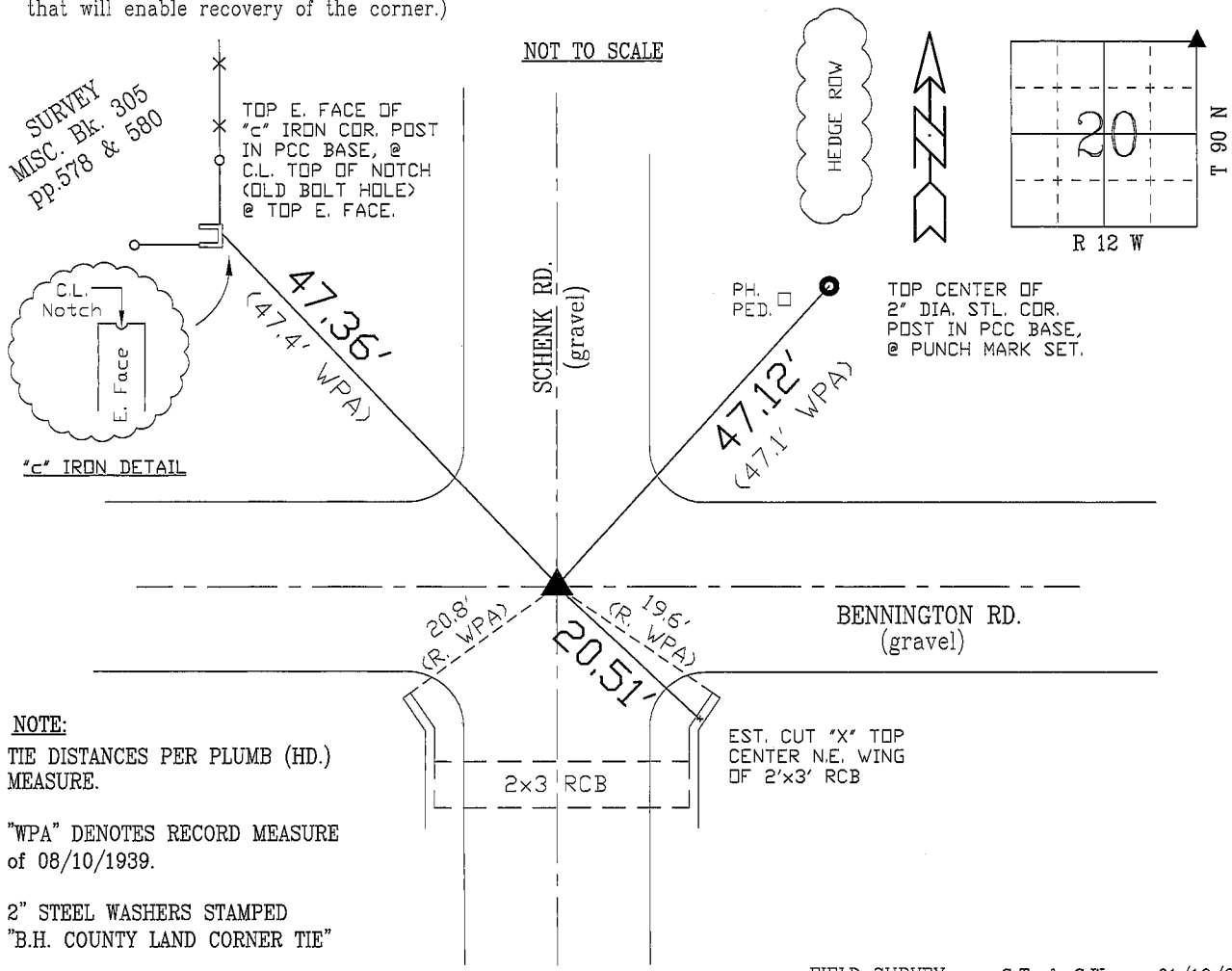
UNITED STATES PUBLIC LAND SURVEY CORNER CERTIFICATE OF  
Land Survey Monuments situated in Section 20 , Township 90 N ,  
Range 12 W , of the Fifth Principal Meridian, BLACK HAWK County, Iowa.  
Previously recorded in Misc. Book n/a , Page n/a , in County Recorder's Office.

(Show reason for preparing this certificate, the evidence and detailed procedures used in establishing the corner positions and monumentation found or placed.)

Monument Description and Remarks: FOUND 16d NAIL C.L. INTERSECTION,  
ASSUMED OVER STD. WPA C.M. w/ CORNER TEMP. REFERENCED. PULLED NAIL  
& EXCAVATED TO 12" Dp. PER WPA DEPTH & DROVE TEST HOLES w/ RBR TO  
18" Dp. (PROBED/FROST) WITH NO SOLID OBJECT DETECTED. FND. SOLID REM.  
LATH AT LOC., GIVEN DATE (HARD FROST), HELD NAIL REF. AND SET #5 RBR.  
x 12" L. AT 0.40' DEEP w/ 2" ALUM. CAP STAMPED "B.H. COUNTY LAND CORNER"  
AND RETIED FOR RECORD. CORNER UTILIZED FOR BR. ROW PROJECT, NORTH.

PLAN - VIEW

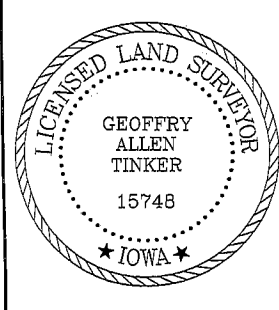
(Show a minimum of three reference ties to durable physical objects, relevant monuments and physical conditions that will enable recovery of the corner.)



FIELD SURVEY: G.T. & C.W. 01/19/2006

PREPARED BY: G. TINKER 01/24/2006

CERTIFICATION



I hereby certify that this land surveying document was prepared and the related survey work was performed by me or under my direct personal supervision and that I am a duly licensed Land Surveyor under the laws of the State of Iowa.

Geoffry Allen Tinker (date) 01/24/2006

License Number 15748

My license renewal date is December 31, 2006

Pages or sheets covered by this seal:  
This Land Corner Certificate Only.

LIST CORNERS TO BE INDEXED

Corner	Section	Township	Range
N.E. COR.	20	90 N	12 W
N.W. COR.	21	90 N	12 W
S.E. COR.	17	90 N	12 W
S.W. COR.	16	90 N	12 W