

*
Michael R. Fagle, P.L.S.

AECOM, 501 Sycamore St., Suite 222, Waterloo, Iowa 50703

I-319-232-6531

UNITED STATES PUBLIC LAND SURVEY CORNER CERTIFICATE OF

Land Survey Monuments situated in Section 19, Township 90 North,
Range 12 West, of the Fifth Principal Meridian, BLACK HAWK
County, Iowa. Previously recorded in 1939 TIE BOOK IN ENGINEER'S OFFICE
in County Recorder's Office. (Book, Page, Document Number, etc.)

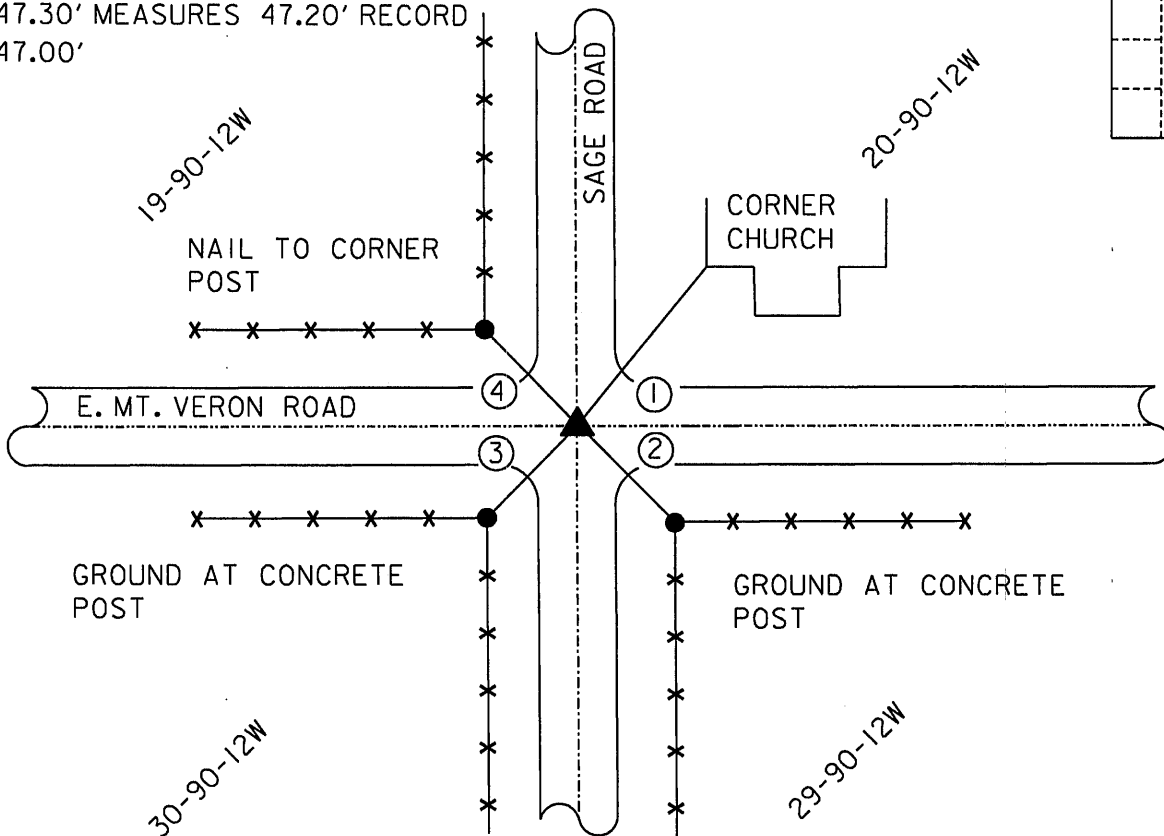
(Show reason for preparing this certificate, the evidence and detailed procedures used in establishing the corner positions and monumentation found or placed.)

Monument Description and Remarks: FOUND 1/2" REBAR FROM EXISTING TIES IN
1939 TIE BOOK IN THE ENGINEER'S OFFICE AT THE SOUTHEAST CORNER OF SECTION 19,
TOWNSHIP 90 NORTH, RANGE 12 WEST OF THE 5TH P.M. RETIED

PLAN - VIEW

(Show a minimum of three reference ties to durable physical objects, relevant monuments and physical conditions that will enable recovery of the corner.)

- ① = 97.00' MEASURED/RECORD
- ② = 43.70' MEASURED/RECORD
- ③ = 47.30' MEASURES 47.20' RECORD
- ④ = 47.00'



	I hereby certify that this Land Surveying document was prepared by me or under my direct personal supervision and that I am a duly Licensed Land Surveyor under the laws of the State of Iowa.	
		1-03-2013
	MICHAEL R. FAGLE	Date
	License number 8505	
	My license renewal date is December 31, 2014	
Pages or sheets covered by this seal: THIS SHEET		

List Corners to be Indexed			
Corners	Section	Twp	Range
SOUTHEAST CORNER	19	T 90 N	R 12 W

7.007