

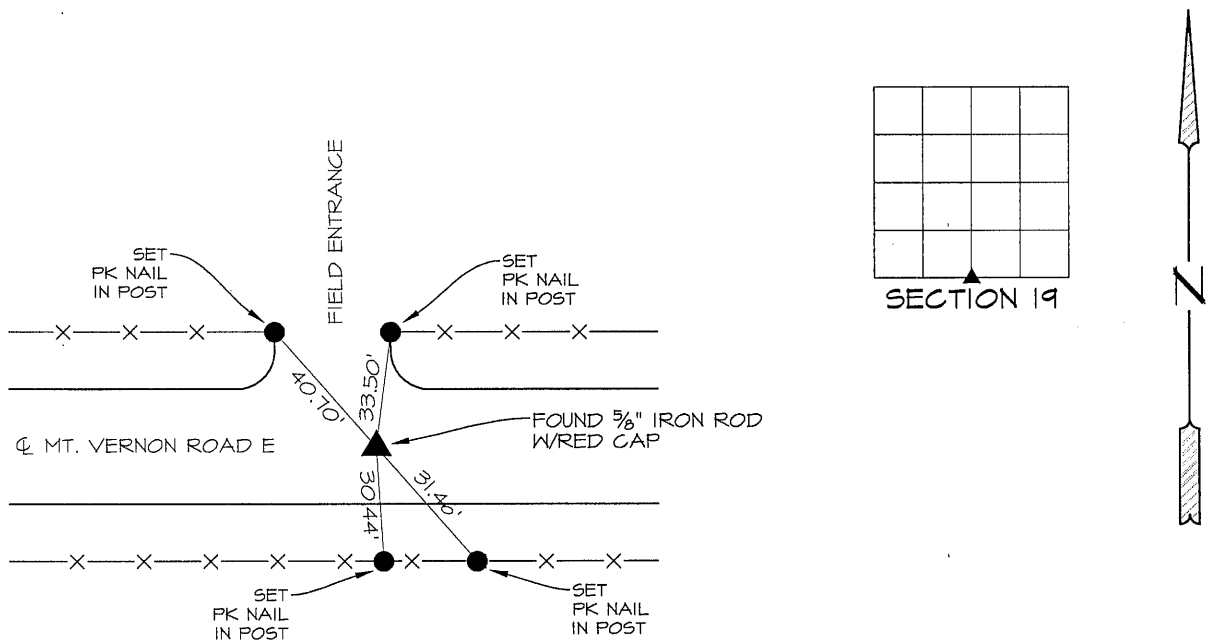
PREPARED BY PATRICK SHEPARD: CIVIL ENGINEERING CONSULTANTS, INC. - 2400 86th ST. #12 -DES MOINES, IOWA 50322

UNITED STATES PUBLIC LAND SURVEY CORNER CERTIFICATE
OF

LAND SURVEY MONUMENTS SITUATED IN SECTION 19, TOWNSHIP 90 NORTH, RANGE 12 WEST, OF THE FIFTH PRINCIPAL MERIDIAN, BLACK HAWK COUNTY, IOWA. PREVIOUS RECORD FOUND IN THE SURVEY BOOKS AT THE BLACK HAWK COUNTY ENGINEER'S OFFICE.

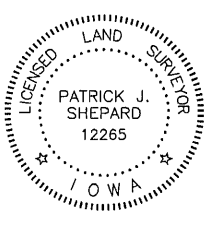
MONUMENT DESCRIPTION AND REMARKS: S 1/4 CORNER 19-90-12. PREVIOUS RECORD INDICATES CONCRETE MONUMENT WITH CAP. FOUND 5/8" IRON ROD WITH RED CAP IN CENTERLINE OF ROAD. THIS CERTIFICATE IS DOCUMENT MONUMENTATION FOUND AND ACCEPTED AS THE S 1/4 CORNER AND TO PROVIDE TIES.

PLAN -VIEW



LIST CORNERS TO BE INDEXED

CORNERS	SECTION	TWP.	RANGE
S 1/4 CORNER	19	90	12
N 1/4 CORNER	30	90	12



I HEREBY CERTIFY THAT THIS LAND SURVEYING DOCUMENT WAS PREPARED AND THE RELATED SURVEY WORK WAS PERFORMED BY ME OR UNDER MY DIRECT PERSONAL SUPERVISION AND THAT I AM A DULY LICENSED LAND SURVEYOR UNDER THE LAWS OF THE STATE OF IOWA.
Patrick J. Shepard
PATRICK J. SHEPARD, IOWA LICENSE NO. 12265 DATE 1-24-13
MY LICENSE RENEWAL DATE IS DECEMBER 31, 2013
PAGES OR SHEETS COVERED BY THIS SEAL:
THIS SHEET ONLY