

Kyle J. Helland, 6109 Chancellor Drive, Cedar Falls, Iowa 50613-6916, (319)-266-0161

UNITED STATES PUBLIC LAND SURVEY CORNER CERTIFICATE OF

LAND SURVEY MONUMENTS SITUATED IN SECTION NO. 19, TOWNSHIP NO. 90 NORTH, RANGE
NO. 12 WEST OF THE FIFTH PRINCIPAL MERIDIAN, BLACK HAWK COUNTY, IOWA.
PREVIOUSLY RECORDED IN FILE NO. 2013-15760.

(SHOW REASON FOR PREPARING THIS CERTIFICATE, THE EVIDENCE AND DETAILED PROCEDURES USED IN ESTABLISHING THE
CORNER POSITIONS AND MONUMENTATION FOUND OR PLACED.)

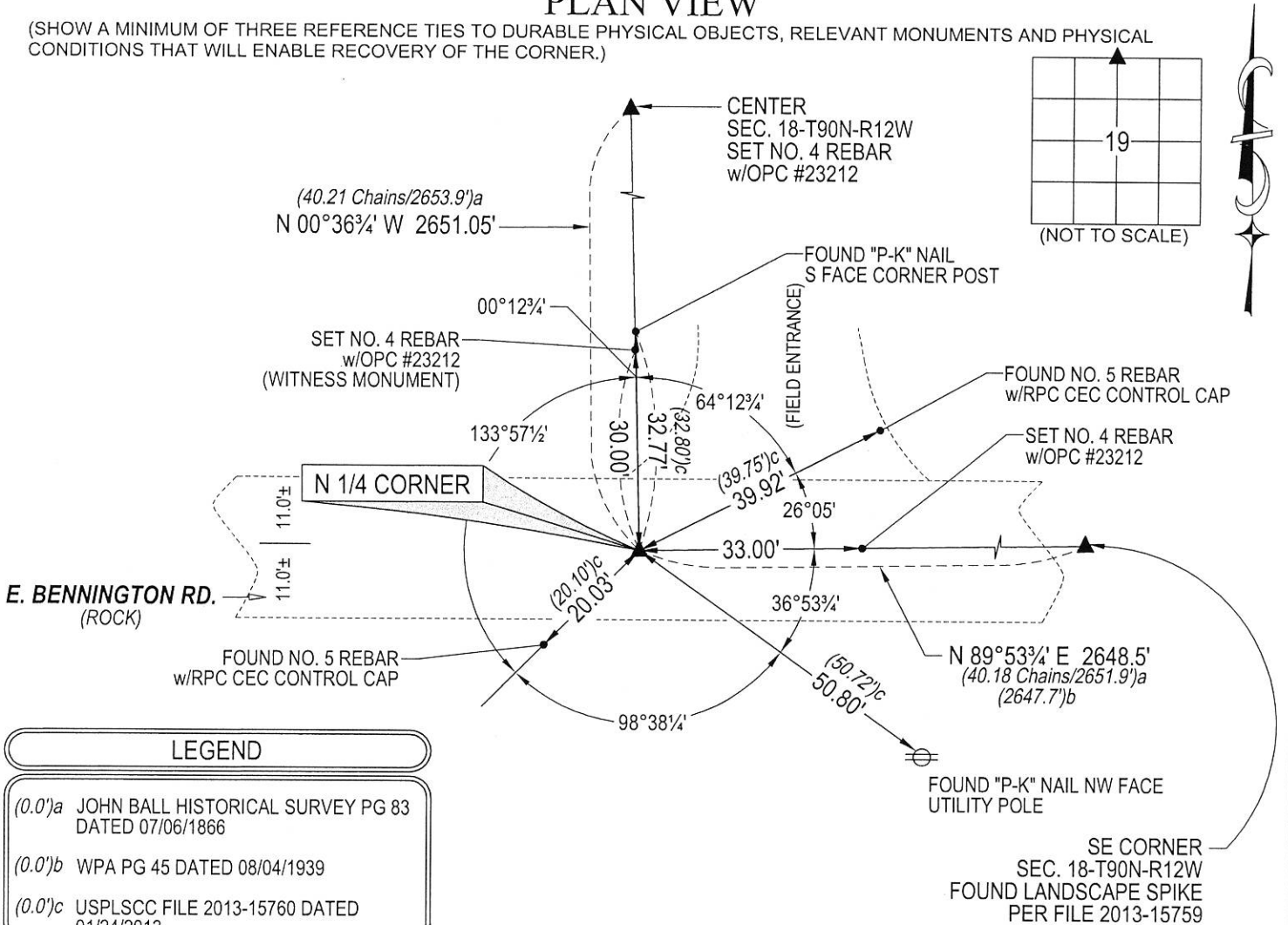
MONUMENT DESCRIPTION AND REMARKS:

MONUMENTATION HAS CHANGED. SURVEY COMPLETED IN THE SE 1/4 OF SEC. 18-T90N-R12W.

→ **N 1/4 CORNER:** JOHN BALL HISTORICAL SURVEY PAGE 83 DATED 07/06/1866 CALLS FOR [MOUND]. BLACK HAWK
COUNTY ENGINEER REFERENCE TIES CALLS FOR [FOUND N****HEAD & IRON BAR FOUND BY COUNTY]. WPA PAGE 45
DATED 08/04/1939 CALLS FOR [FOUND N****HEAD 22" x 12" x 11" AND IRON BAR 1/2" x 17 1/2". SET C.M. 12" DEEP].
USPLSCC FILE NO. 2013-15760 DATED 01/24/2013 CALLS FOR [FOUND CONCRETE MONUMENT WITH BRASS CAP THAT
MATCHES PREVIOUS RECORD.]. SEARCHED AREA WITH MAGNETIC DETECTOR AND EXCAVATED, FOUND CONCRETE
MONUMENT WITH BRASS CAP 1.5' DEEP SET NO. 4 REBAR WITH LICENSE #23212 (1.0' LONG) ABOVE SAID MONUMENT TO
RAISE MONUMENTATION.

PLAN VIEW

(SHOW A MINIMUM OF THREE REFERENCE TIES TO DURABLE PHYSICAL OBJECTS, RELEVANT MONUMENTS AND PHYSICAL
CONDITIONS THAT WILL ENABLE RECOVERY OF THE CORNER.)



(BEARINGS ARE ASSUMED)



HELLAND ENGINEERING & SURVEYING, LTD.
6109 Chancellor Drive
Cedar Falls, Iowa 50613-6916
(319)-266-0161

SHINER = 4d. NAIL & 1 5/16"Ø METAL SHINER DRAWN BY: CDR
BRASS TAG = 4d. NAIL & 13/16"Ø BRASS TAG
OPC = PLASTIC CAP (O=ORANGE, R=RED, Y=YELLOW)
(00') RECORDED AS FILE NAME: 19-153-24.DWG



I hereby certify that this land surveying document was prepared
and the related survey work was performed by me or under my
direct personal supervision and that I am a duly licensed
Professional Land Surveyor under the laws of the State of Iowa.

Kyle J. Helland
License Number 23212
My license renewal date is December 31, 2019.
All pages or sheets are covered by this seal except:

LIST CORNERS TO BE INDEXED

CORNER	SECTION	TOWNSHIP	RANGE
N 1/4 CORNER	19	90N	12W
S 1/4 CORNER	18	90N	12W