

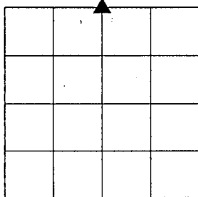
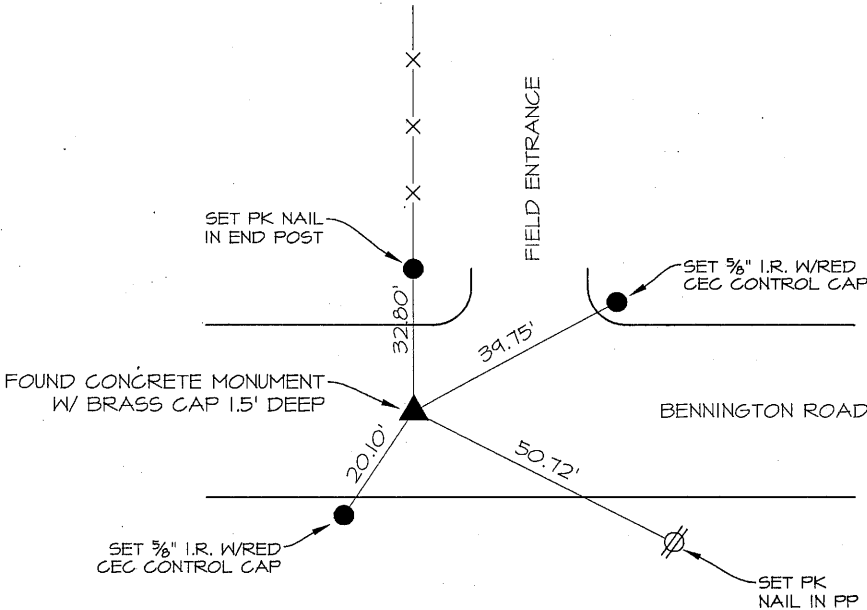
PREPARED BY PATRICK SHEPARD: CIVIL ENGINEERING CONSULTANTS, INC. - 2400 86th ST. #12 -DES MOINES, IOWA 50322

UNITED STATES PUBLIC LAND SURVEY CORNER CERTIFICATE  
OF

LAND SURVEY MONUMENTS SITUATED IN SECTION 19, TOWNSHIP 90 NORTH, RANGE 12 WEST, OF THE FIFTH PRINCIPAL MERIDIAN; BLACK HAWK COUNTY, IOWA. PREVIOUS RECORD FOUND IN THE SURVEY BOOKS AT THE BLACK HAWK COUNTY ENGINEER'S OFFICE.

MONUMENT DESCRIPTION AND REMARKS: N ¼ CORNER 19-90-12. FOUND CONCRETE MONUMENT WITH BRASS CAP THAT MATCHES PREVIOUS RECORD. NO PREVIOUS TIES WERE FOUND. THIS CERTIFICATE IS BEING PREPARED TO REPLACE LOST TIES.

PLAN -VIEW

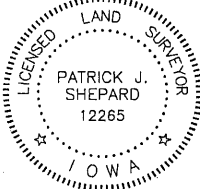


SECTION 19



LIST CORNERS TO BE INDEXED

CORNERS	SECTION	TWP.	RANGE
N ¼ CORNER	19	90	12
S ¼ CORNER	18	90	12



I HEREBY CERTIFY THAT THIS LAND SURVEYING DOCUMENT WAS PREPARED AND THE RELATED SURVEY WORK WAS PERFORMED BY ME OR UNDER MY DIRECT PERSONAL SUPERVISION AND THAT I AM A DULY LICENSED LAND SURVEYOR UNDER THE LAWS OF THE STATE OF IOWA.  
*P. Shepard 1-24-13*  
PATRICK J. SHEPARD, IOWA LICENSE NO. 12265 DATE  
MY LICENSE RENEWAL DATE 15 DECEMBER 31, 2015  
PAGES OR SHEETS COVERED BY THIS SEAL:  
THIS SHEET ONLY