

COMPARED

BLACK HAWK COUNTY ENGINEER

PREPARED BY: BLACK HAWK COUNTY ENGINEERS OFFICE
316 E. FIFTH STREET, ROOM 211 WATERLOO, IOWA 50703

PH.# (319) 833-3008
FAX.# (319) 833-3139

SLSI 9-94
CERT 12-96

UNITED STATES PUBLIC LAND SURVEY CORNER CERTIFICATE OF

Land Survey Monuments situated in Section 18 , Township 90 N ,
Range 12 W , of the Fifth Principal Meridian, BLACK HAWK County, Iowa.
Previously recorded in Misc. Book 338 , Page 640 , in County Recorder's Office.

(Show reason for preparing this certificate, the evidence and detailed procedures used in establishing the corner positions and monumentation found or placed.)

Monument Description and Remarks: FOUND 5/8" REBAR PRIOR TO RE-SURF.
EXIST. 3" ACC MILLED, AND PCC BASE RUBBELIZED w/ NEW 7" ACC MAT.
CORNER TEMP. REFERENCED, AND RESET w/ #5 REBAR LOCATED AT NORTH
EDGE C.L. ACC JOINT. CORNER ANGLE PER RTK GPS MEASURE.

CORNER MODIFIED FROM EXISTING LAND CORNER RECORD, BY PLS #9018

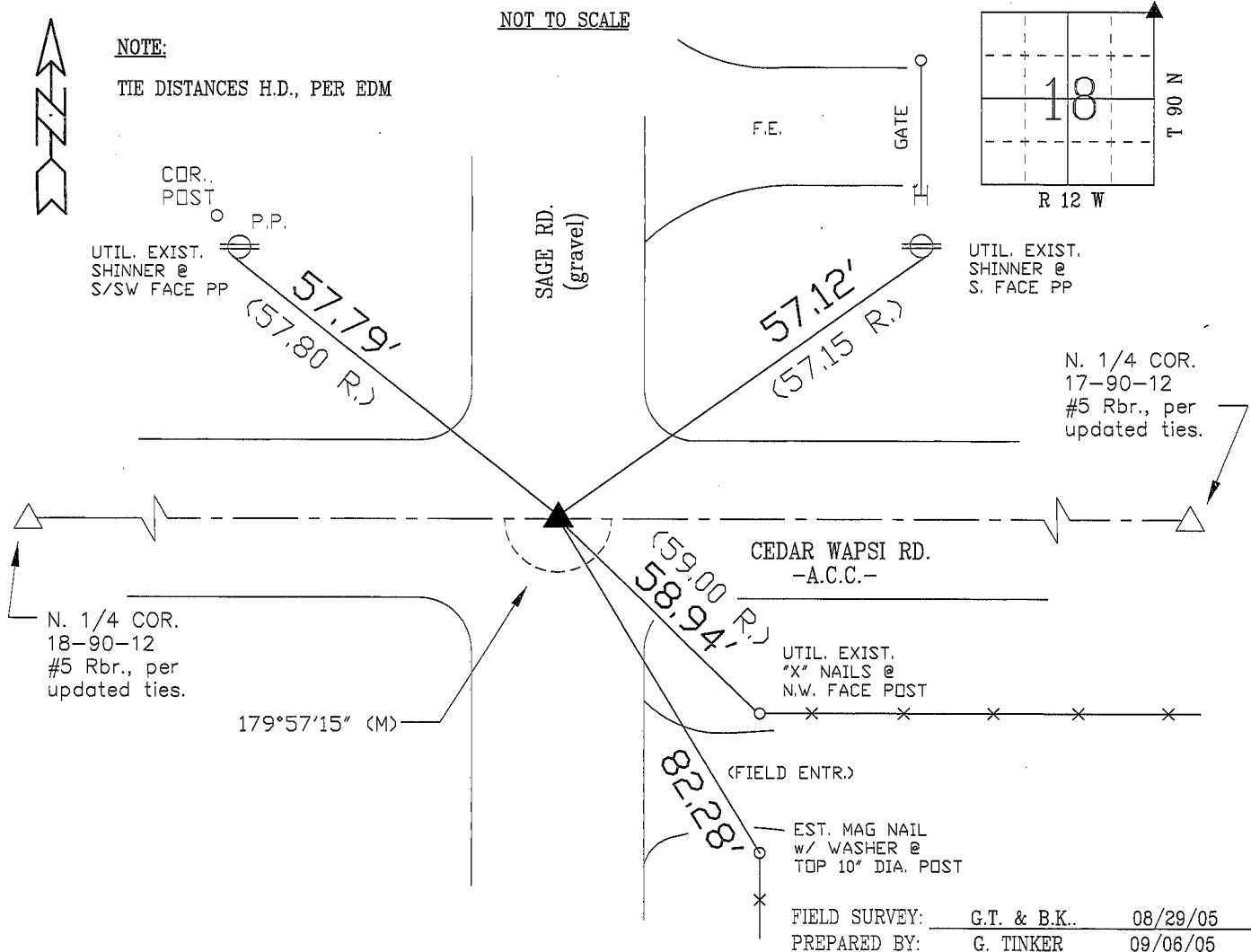
PLAN - VIEW

(Show a minimum of three reference ties to durable physical objects, relevant monuments and physical conditions that will enable recovery of the corner.)

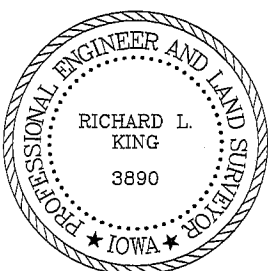
NOT TO SCALE

NOTE:

TIE DISTANCES H.D., PER EDM



CERTIFICATION



I hereby certify that this land surveying document was prepared and the related survey work was performed by me or under my direct personal supervision and that I am a duly licensed Land Surveyor under the laws of the State of Iowa.

Richard L. King

License Number 3890

My license renewal date is December 31, 2005

Pages or sheets covered by this seal:

This Land Corner Certificate Only.

LIST CORNERS TO BE INDEXED

<u>Corner</u>	<u>Section</u>	<u>- Township</u>	<u>- Range</u>
N.E. COR.	18	90 N	12 W
N.W. COR.	17	90 N	12 W
S.E. COR.	7	90 N	12 W
S.W. COR.	8	90 N	12 W