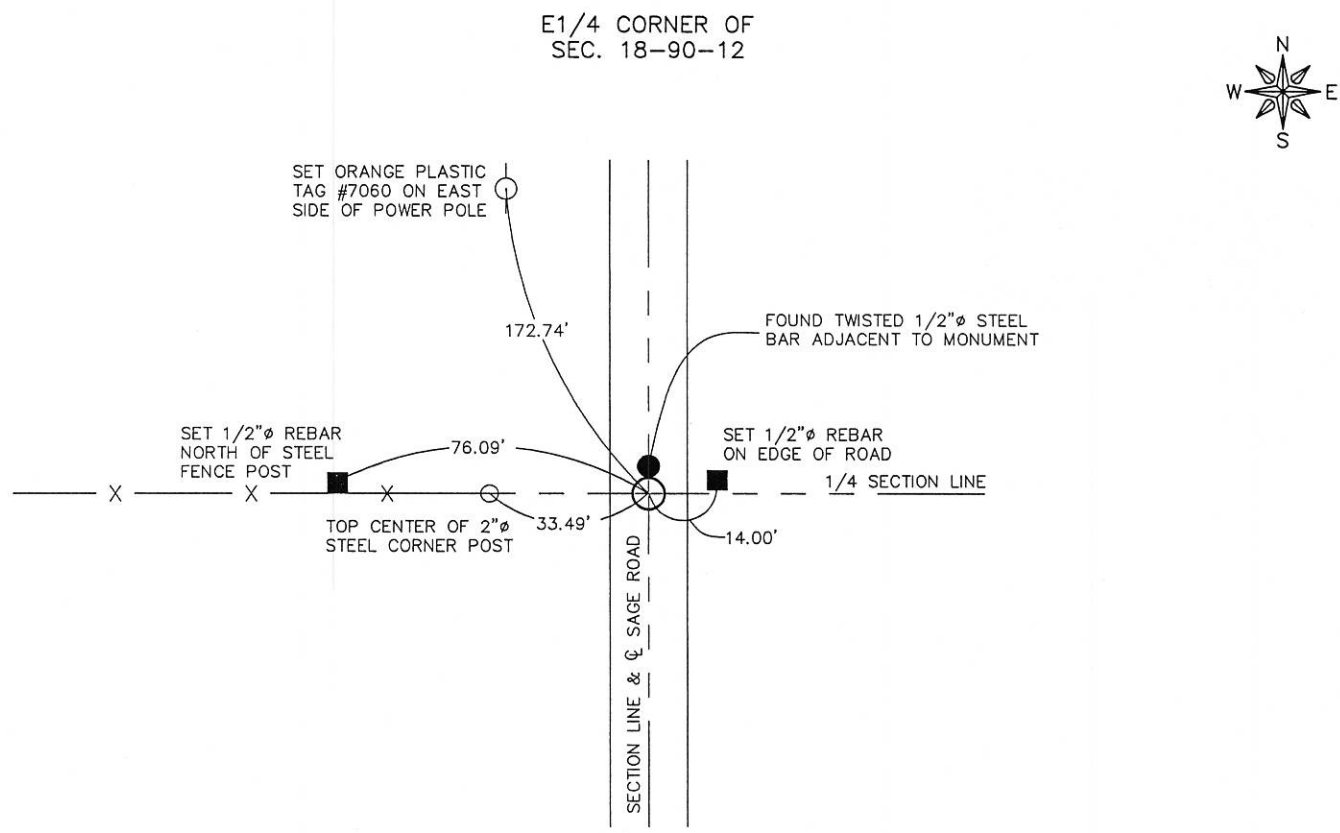


Prepared by/Return to: FEHR GRAHAM, 128 S. Vine Street, West Union, IA 52175 – Ph. (563)422-5131

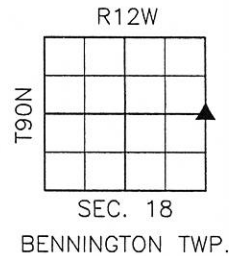
UNITED STATES PUBLIC LAND SURVEY CORNER CERTIFICATE
BLACK HAWK COUNTY, IOWA
SECTION 18-T90N-R12W



PREVIOUSLY RECORDED:
NO PREVIOUS CERTIFICATE ON FILE.

PURPOSE OF CERTIFICATE:
FOUND MONUMENT CALLED FOR ON A SECTION CORNER TIE SHEET AT THE BLACK HAWK COUNTY ENGINEER'S OFFICE. THIS MONUMENT WAS CALLED OUT AS BEING A LIMESTONE, IRON BAR AND LATH ON SAID TIE SHEET. ACCEPTED FOUND CONCRETE MONUMENT WITH 1/2" TWISTED IRON BAR ADJACENT TO IT AS MONUMENT AFTER REVIEWING ALL EVIDENCE.

MONUMENT DESCRIPTION AND ESTABLISHMENT:
FOUND CONCRETE MONUMENT (PLACED CUT "X" ON TOP)



CORNERS TO BE INDEXED

CORNER	SECTION	TOWNSHIP	RANGE
E1/4	18	90N	12W



I hereby certify that this land surveying document was prepared and the related survey work was performed by me or under my direct personal supervision and that I am a duly licensed Land Surveyor under the laws of the State of Iowa.

Lyle G. Tekippe 10-1-18
Lyle G. Tekippe, P.E. & P.L.S. Date
License Number: 7060
My license renewal date is December 31, 2018.
Sheets covered by this seal: Sheet 1

FEHR GRAHAM
ENGINEERING & ENVIRONMENTAL
© 2018 FEHR GRAHAM

ILLINOIS
IOWA
WISCONSIN

G:\C3D\18\18-841-LS-IA REG UTIL\18-90-120.dwg

JOB NUMBER:
18-841

SHEET NUMBER:
1 of 1