



Doc ID: 005584220001 Type: GEN  
Recorded: 09/26/2014 at 03:40:53 PM  
Fee Amt: \$7.00 Page 1 of 1  
Black Hawk County Iowa  
JUDITH A MCCARTHY RECORDER

File 2015-00005508

\*Paul H. Helland, 1107 Technology Parkway, Cedar Falls, Iowa 50613-6951, (319)-266-0161

UNITED STATES PUBLIC LAND SURVEY CORNER CERTIFICATE  
OF

LAND SURVEY MONUMENTS SITUATED IN SECTION NO. 17, TOWNSHIP NO. 90 NORTH, RANGE NO. 12 WEST OF THE FIFTH PRINCIPAL MERIDIAN, BLACK HAWK COUNTY, IOWA.  
PREVIOUSLY RECORDED IN FEE BOOK #2006 18241

(SHOW REASON FOR PREPARING THIS CERTIFICATE, THE EVIDENCE AND DETAILED PROCEDURES USED IN ESTABLISHING THE CORNER POSITIONS AND MONUMENTATION FOUND OR PLACED.)

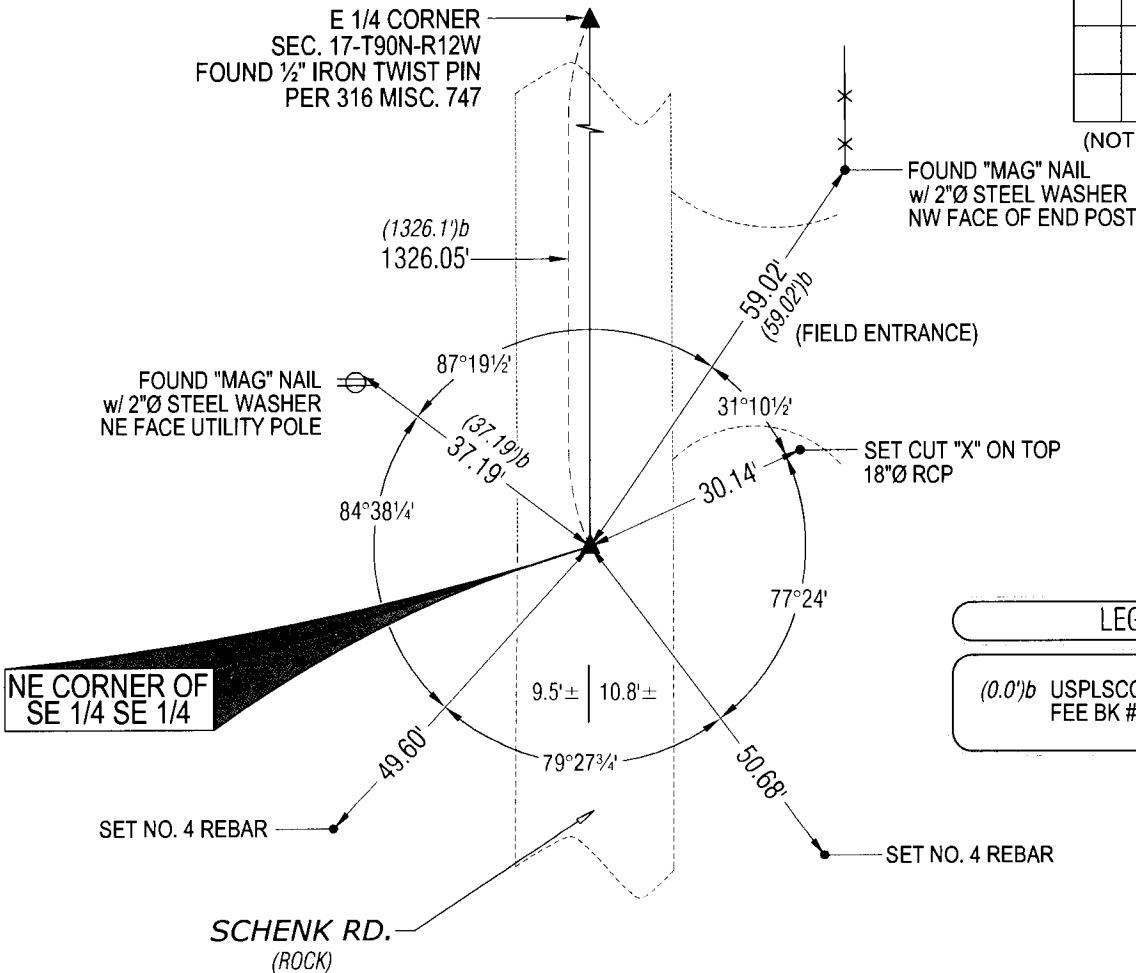
MONUMENT DESCRIPTION AND REMARKS:

ONLY TWO REFERENCE TIES REMAIN & MONUMENTATION HAS CHANGED. SURVEY COMPLETED IN THE SW 1/4 OF SEC. 16-T90N-R12W.

NE CORNER SE 1/4 SE 1/4: USPLSCC FEE BOOK #2006 18241 DATED 1/24/2006 CALLS FOR [NO CORNER OF RECORD, NOR PRIOR ESTABLISHMENT. CORNER ON EAST LINE OF S.E. 1/4 SAID SECTION AT EQUAL SPLIT OF SAID E. LINE MEASURE. CORNER LOCATION FELL IN LINE WITH 1/4-1/4 FENCE LINE TO EAST. CORNER SET w/ #5 REBAR x 32" L. & 2" ALUM. CAP STAMPED "B.H. COUNTY LAND CORNER" @ 2" DEEP IN GRANULAR RD. SURFACE. CORNER ESTABLISHED FOR BRIDGE ROW PROJECT N. OF CORNER.]. FOUND NO. 5 REBAR WITH DAMAGED ALUMINUM CAP BENT NORTHEASTERLY, REMOVED AND STRAIGHTENED, RESET SAID NO. 5 REBAR PER TWO REMAINING TIES (0.3') DEEP.

PLAN VIEW

(SHOW A MINIMUM OF THREE REFERENCE TIES TO DURABLE PHYSICAL OBJECTS, RELEVANT MONUMENTS AND PHYSICAL CONDITIONS THAT WILL ENABLE RECOVERY OF THE CORNER.)

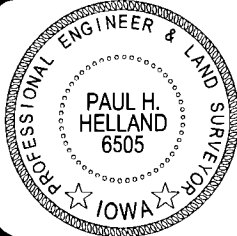


(BEARINGS ARE ASSUMED)



HELLAND ENGINEERING & SURVEYING, LTD.  
1107 Technology Parkway  
Cedar Falls, Iowa 50613-6951  
(319)-266-0161

SHINER = 8d NAIL & 1 5/16"Ø METAL SHINER  
BRASS TAG = 8d NAIL & 13/16"Ø BRASS TAG  
OPC = PLASTIC CAP (O=ORANGE, R=RED, Y=YELLOW)  
(00') RECORDED AS FILE NAME: 14-228-54.DWG



I hereby certify that this land surveying document was prepared and the related survey work was performed by me or under my direct personal supervision and that I am a duly licensed Professional Engineer and Surveyor under the laws of the State of Iowa.  
*Paul H. Helland* 9/26/14  
Paul H. Helland  
License Number 6505  
My license renewal date is December 31, 2015.  
All pages or sheets are covered by this seal except:

LIST CORNERS TO BE INDEXED			
CORNER	SECTION	TOWNSHIP	RANGE
NE COR. SE 1/4 SE 1/4	17	90N	12W
SE COR. NE 1/4 SE 1/4	17	90N	12W
SW COR. NW 1/4 SW 1/4	16	90N	12W
NW COR. SW 1/4 SW 1/4	16	90N	12W