

Patricia A. Deo

ENGINEERS OFFICE

PREPARED BY:

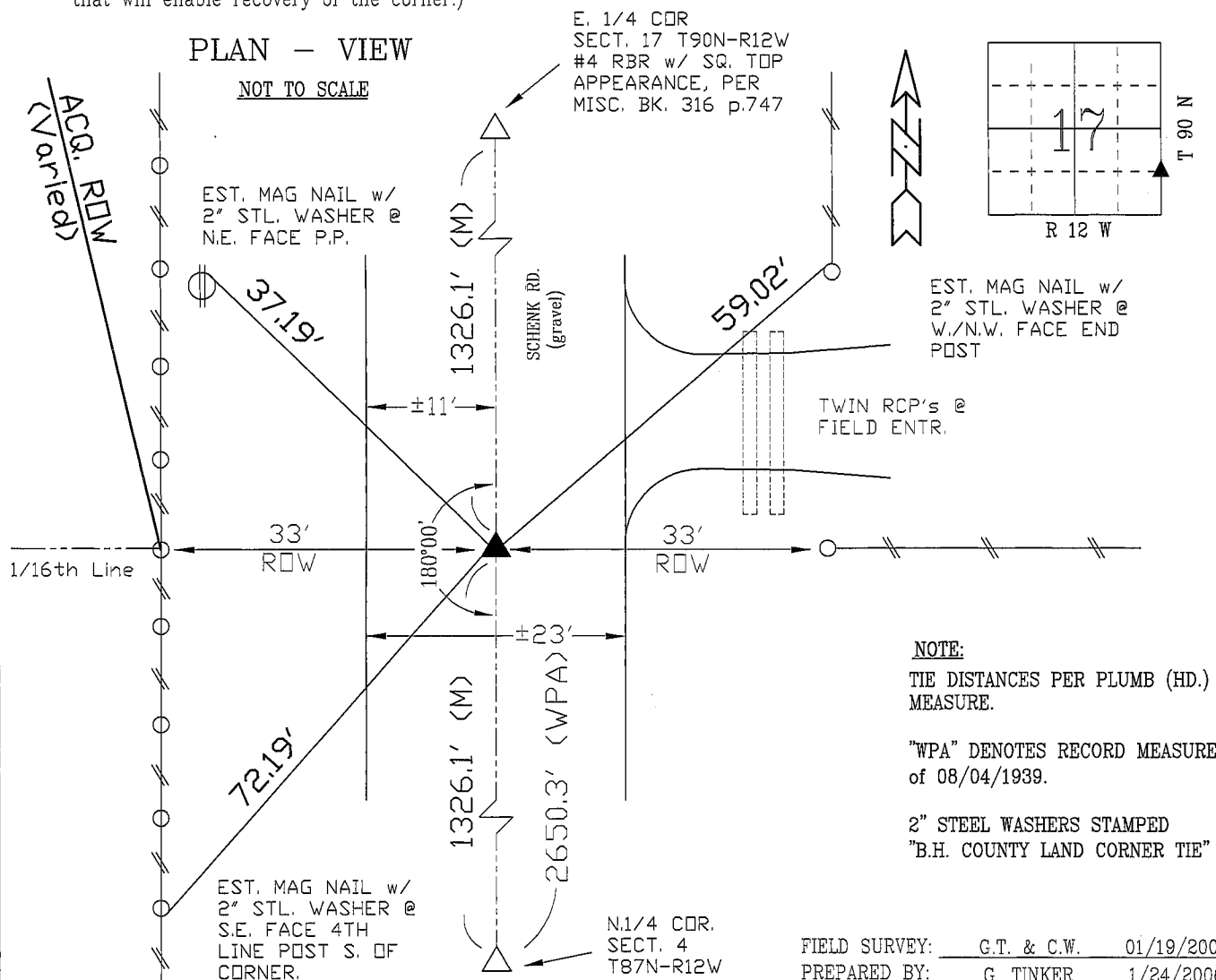
BLACK HAWK COUNTY ENGINEERS OFFICE
316 E. FIFTH STREET, ROOM 211 WATERLOO, IOWA 50703PH.# (319) 833-3008
FAX.# (319) 833-3139SLSI 9-94
CERT 12-96

UNITED STATES PUBLIC LAND SURVEY CORNER CERTIFICATE OF
Land Survey Monuments situated in Section 17, Township 90 N,
Range 12 W, of the Fifth Principal Meridian, BLACK HAWK County, Iowa.
Previously recorded in FEE Book n/a, Page n/a, in County Recorder's Office.

(Show reason for preparing this certificate, the evidence and detailed procedures used in establishing the corner positions and monumentation found or placed.)

Monument Description and Remarks: N.E. COR., of S.E.1/4-S.E.1/4
NO CORNER OF RECORD, NOR PRIOR ESTABLISHMENT. CORNER SET ON EAST
LINE OF S.E. 1/4 SAID SECTION AT EQUAL SPLIT OF SAID E. LINE MEASURE.
CORNER LOCATION FELL IN LINE WITH 1/4-1/4 FENCE LINE TO EAST.
CORNER SET w/ #5 REBAR x 32" L. & 2" ALUM. CAP STAMPED "B.H. COUNTY
LAND CORNER" @ 2" DEEP IN GRANULAR RD. SURFACE.
CORNER ESTABLISHED FOR BRIDGE ROW PROJECT N. OF CORNER.

(Show a minimum of three reference ties to durable physical objects, relevant monuments and physical conditions that will enable recovery of the corner.)



CERTIFICATION



I hereby certify that this land surveying document was prepared and the related survey work was performed by me or under my direct personal supervision and that I am a duly licensed Land Surveyor under the laws of the State of Iowa.

Geoffrey Allen Tinker 01/24/2006
Geoffrey Allen Tinker (date)

License Number 15748

My license renewal date is December 31, 2006

Pages or sheets covered by this seal:

This Land Corner Certificate Only.

LIST CORNERS TO BE INDEXED

Corner	Section	Township	Range
N.E. COR.	17	90 N	12 W
S.E.1/4 - S.E.1/4			
N.W. COR.	16	90 N	12 W
S.W.1/4 - S.W.1/4			