



Doc ID: 005584220001 Type: GEN
Recorded: 09/26/2014 at 03:40:53 PM
Fee Amt: \$7.00 Page 1 of 1
Black Hawk County Iowa
JUDITH A MCCARTHY RECORDER

File 2015-00005508

Paul H. Helland, 1107 Technology Parkway, Cedar Falls, Iowa 50613-6951, (319)-266-0161

UNITED STATES PUBLIC LAND SURVEY CORNER CERTIFICATE OF

LAND SURVEY MONUMENTS SITUATED IN SECTION NO. 17, TOWNSHIP NO. 90 NORTH, RANGE
NO. 12 WEST OF THE FIFTH PRINCIPAL MERIDIAN, BLACK HAWK COUNTY, IOWA.
PREVIOUSLY RECORDED IN FEE BOOK #2006 18241.

(SHOW REASON FOR PREPARING THIS CERTIFICATE, THE EVIDENCE AND DETAILED PROCEDURES USED IN ESTABLISHING THE
CORNER POSITIONS AND MONUMENTATION FOUND OR PLACED.)

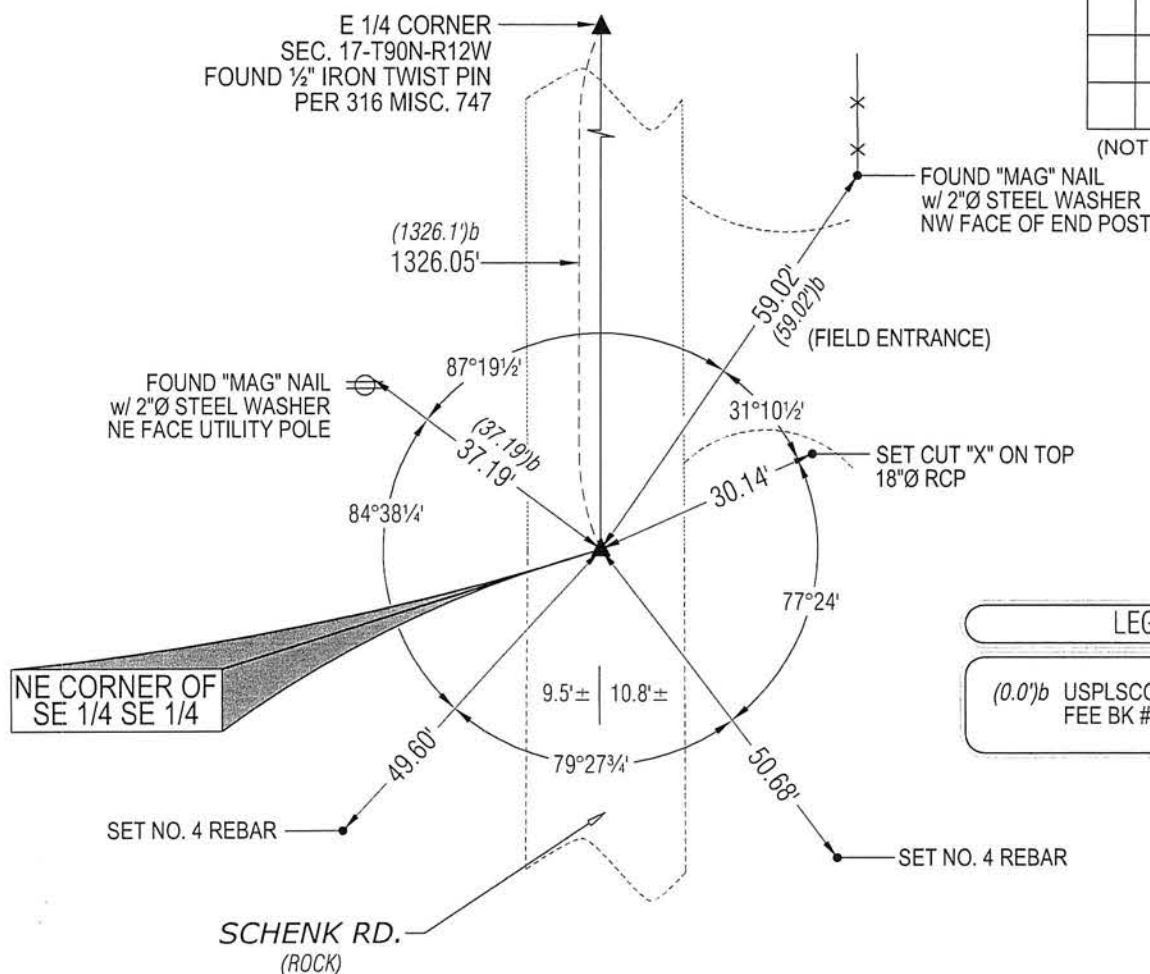
MONUMENT DESCRIPTION AND REMARKS:

ONLY TWO REFERENCE TIES REMAIN & MONUMENTATION HAS CHANGED. SURVEY COMPLETED IN THE SW
1/4 OF SEC. 16-T90N-R12W.

→ **NE CORNER SE 1/4 SE 1/4:** USPLSCC FEE BOOK #2006 18241 DATED 1/24/2006 CALLS FOR [NO CORNER OF
RECORD, NOR PRIOR ESTABLISHMENT. CORNER ON EAST LINE OF S.E. 1/4 SAID SECTION AT EQUAL SPLIT OF
SAID E. LINE MEASURE. CORNER LOCATION FELL IN LINE WITH 1/4-1/4 FENCE LINE TO EAST. CORNER SET w/
#5 REBAR x 32" L. & 2" ALUM. CAP STAMPED "B.H. COUNTY LAND CORNER" @ 2" DEEP IN GRANULAR RD.
SURFACE. CORNER ESTABLISHED FOR BRIDGE ROW PROJECT N. OF CORNER.]. FOUND NO. 5 REBAR WITH
DAMAGED ALUMINUM CAP BENT NORTHEASTERLY, REMOVED AND STRAIGHTENED, RESET SAID NO. 5 REBAR
PER TWO REMAINING TIES (0.3") DEEP.

PLAN VIEW

(SHOW A MINIMUM OF THREE REFERENCE TIES TO DURABLE PHYSICAL OBJECTS, RELEVANT MONUMENTS AND PHYSICAL
CONDITIONS THAT WILL ENABLE RECOVERY OF THE CORNER.)



LEGEND

(0.0')b USPLSCC DATED 1/24/2006
FEE BK # 2006 18241

(BEARINGS ARE ASSUMED)



HELLAND ENGINEERING & SURVEYING, LTD.
1107 Technology Parkway
Cedar Falls, Iowa 50613-6951
(319)-266-0161

SHINER = 8d NAIL & 1 5/16"Ø METAL SHINER
BRASS TAG = 8d NAIL & 13/16"Ø BRASS TAG
OPC = PLASTIC CAP (O=ORANGE, R=RED, Y=YELLOW)
(00') RECORDED AS FILE NAME: 14-228-54.DWG



I hereby certify that this land surveying document was prepared
and the related survey work was performed by me or under my
direct personal supervision and that I am a duly licensed
Professional Land Surveyor under the laws of the State of Iowa.

Paul H. Helland 3/26/14
Paul H. Helland
License Number 6505

My license renewal date is December 31, 2015.
All pages or sheets are covered by this seal except:

LIST CORNERS TO BE INDEXED

CORNER	SECTION	TOWNSHIP	RANGE
NE COR. SE 1/4 SE 1/4	17	90N	12W
SE COR. NE 1/4 SE 1/4	17	90N	12W
SW COR. NW 1/4 SW 1/4	16	90N	12W
NW COR. SW 1/4 SW 1/4	16	90N	12W