

BLACK HAWK COUNTY ENGINEER

PREPARED BY: BLACK HAWK COUNTY ENGINEERS OFFICE
316 E. FIFTH STREET, ROOM 211 WATERLOO, IOWA 50703

PH.# (319) 833-3008
FAX.# (319) 833-3139

SLSI 9-94
CERT 12-96

UNITED STATES PUBLIC LAND SURVEY CORNER CERTIFICATE OF
Land Survey Monuments situated in Section 16 , Township 90 N ,
Range 12 W , of the Fifth Principal Meridian, BLACK HAWK County, Iowa.
Previously recorded in Misc. Book n/a , Page n/a , in County Recorder's Office.

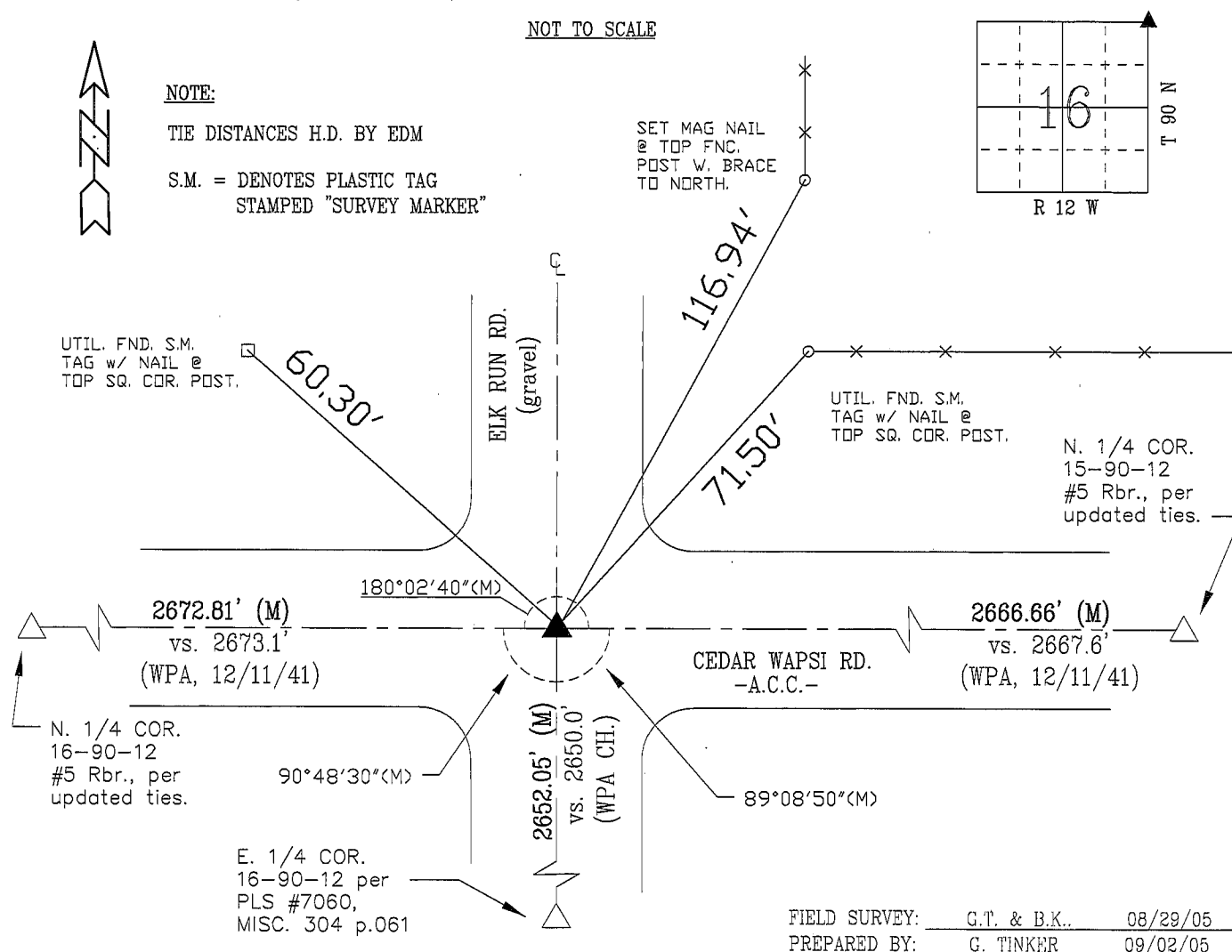
(Show reason for preparing this certificate, the evidence and detailed procedures used in establishing the corner positions and monumentation found or placed.)

Monument Description and Remarks: FOUND 5/8" REBAR PRIOR TO RE-SURF.
EXIST. 3" ACC MILLED, AND PCC BASE RUBBELIZED w/ NEW 7" ACC MAT.
CORNER TEMP. REFERENCED, AND RESET w/ #5 REBAR LOCATED 0.10' S. OF
C.L. ACC JOINT. LAND LINE DISTANCES DENOTED 1/X AVG. SCALE FACTOR
OF RTK GPS S.P.C. DERIVED MEAS., w/ ANGLES PER RTK GPS MEASURE.
CORNER UPDATED FOR PUBLIC REFERENCE.

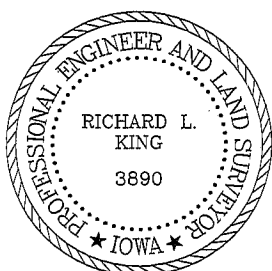
PLAN - VIEW

(Show a minimum of three reference ties to durable physical objects, relevant monuments and physical conditions that will enable recovery of the corner.)

NOT TO SCALE



CERTIFICATION



I hereby certify that this land surveying document was prepared and the related survey work was performed by me or under my direct personal supervision and that I am a duly licensed Land Surveyor under the laws of the State of Iowa.

Richard L. King 9/16/05
Richard L. King (date)

License Number 3890
My license renewal date is December 31, 2005

Pages or sheets covered by this seal:
This Land Corner Certificate Only.

LIST CORNERS TO BE INDEXED

<u>Corner</u>	<u>Section</u>	<u>Township</u>	<u>Range</u>
N.E. COR.	16	90 N	12 W
N.W. COR.	15	90 N	12 W
S.E. COR.	9	90 N	12 W
S.W. COR.	10	90 N	12 W