

UNITED STATES PUBLIC LAND SURVEY CORNER CERTIFICATE

OF

Land Survey Monuments situated in Section 15, Township 90 NORTH, Range 12 WEST, of the Fifth Principal Meridian, BLACK HAWK County, Iowa.
Previously recorded in (NONE) in County Recorder's Office.

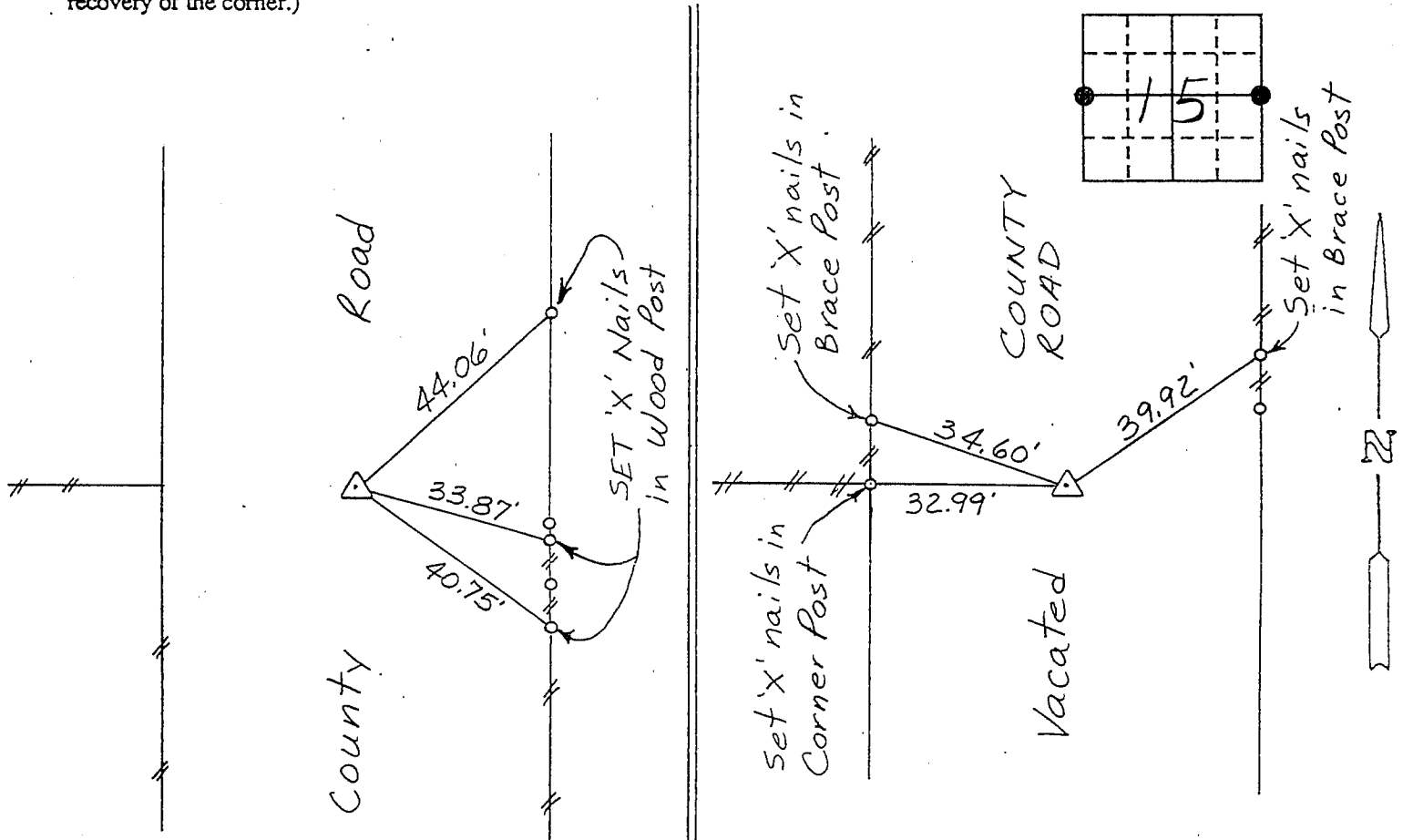
(book, page, document number, etc.)

how reason for preparing this certificate; the evidence and detailed procedures used in establishing the corner positions and monumentation found or placed.)

Monument Description and Remarks: W 1/4 CORNER, SECTION 15-T90N-R12W:
SET 1/2" Ø REBAR WITH CAP IN LINE WITH OLD FENCE & ON E OF CO.
ROAD (AS SHOWN ON COUNTY ENGINEER TIES).
E 1/4 CORNER, SECTION 15-T90N-R12W: SET 1/2" Ø REBAR W/ CAP IN
LINE W/ 1/4 SECTION LINE FENCE W. AS INDICATED BY CO. ENGINEER
TIES & RANDOM CHAINING NOTES.

PLAN - VIEW

(Show a minimum of three reference ties to durable physical objects, relevant monuments and physical conditions that will enable recovery of the corner.)



W 1/4 CORNER, SECTION 15-T90N-R12W E 1/4 CORNER, SECTION 15-T90N-R12W

I hereby certify that the survey work was completed and this certificate was prepared by me or under my direct personal supervision and that I am a duly registered land surveyor under the laws of the state of Iowa.

Signature: Lyle G. TeKippe

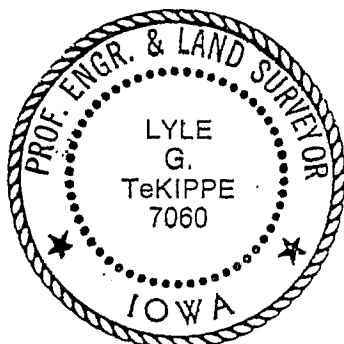
Name typed or printed: Lyle G. TeKippe

Date: 10-22-92 Reg. No. 7060

List Corners to be Indexed

Corners	Section	Twp	Range
W 1/4	15	90N	12W
E 1/4	15	90N	12W

SEAL



MISC. BK. 304 p. 61