

UNITED STATES PUBLIC LAND SURVEY CORNER CERTIFICATE

OF

RECORDED

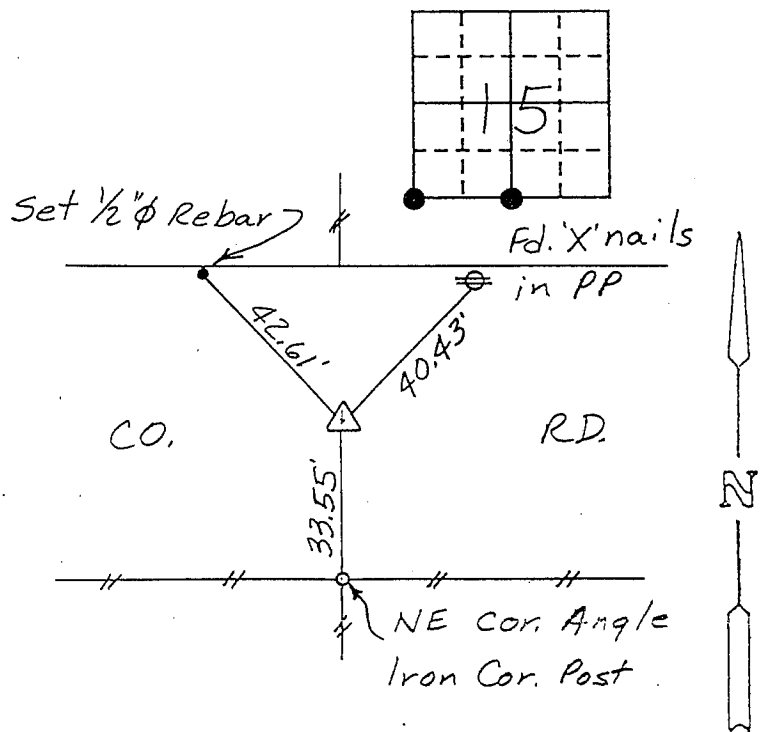
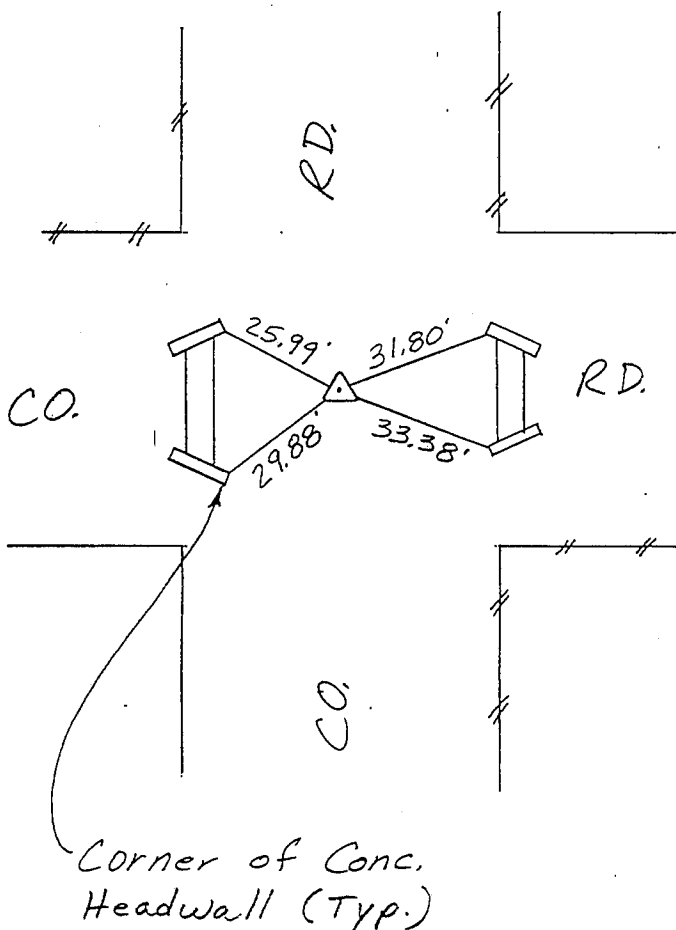
Land Survey Monuments situated in Section 15, Township 90 NORTH, Range 12 WEST, of the Fifth Principal Meridian, BLACK HAWK County, Iowa.
Previously recorded in (NONE) in County Recorder's Office.
(book, page, document number, etc.)

Show reason for preparing this certificate, the evidence and detailed procedures used in establishing the corner positions and monumentation found or placed.)

Monument Description and Remarks: SW CORNER, SECTION 15-T90N-R12W:
FOUND 1/2" TWISTED IRON PIN.
S 1/4 CORNER, SECTION 15-T90N-R12W: FOUND 1/2"
TWISTED IRON PIN.

PLAN - VIEW

(Show a minimum of three reference ties to durable physical objects, relevant monuments and physical conditions that will enable recovery of the corner.)

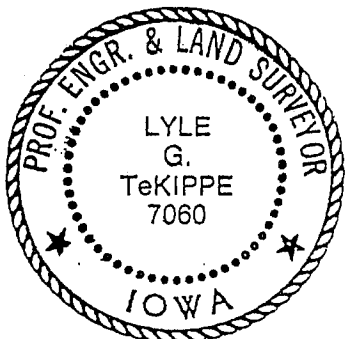


SW CORNER, SECTION 15-T90N-R12W S 1/4 CORNER, SECTION 15-T90N-R12W

I hereby certify that the survey work was completed and this certificate was prepared by me or under my direct personal supervision and that I am a duly registered land surveyor under the laws of the state of Iowa.

Signature: Lyle G. TeKippe
Name typed or printed: Lyle G. TeKippe

Date: 10-22-92 Reg. No. 7060



SEAL

Corners	List Corners to be Indexed	Section	Twp	Range
SW	15	90N	12W	
S 1/4	15	90N	12W	

MISC. BK. 304 p. 63